

FOR LEASE

±2,200 Sq. Ft.

LIZOTTE
AND ASSOCIATES REAL ESTATE INC



5440 - 36 Street NW, Edmonton, AB

CONDO INDUSTRIAL BAY

Property Highlights

- Front grade loading
- Renovated office space
- Precast construction
- Quick access to Whitemud Drive, and Anthony Henday



780.488.0888



www.lizotterealestate.com



#1200, 10117 Jasper Avenue
Edmonton, AB T5J 1W8

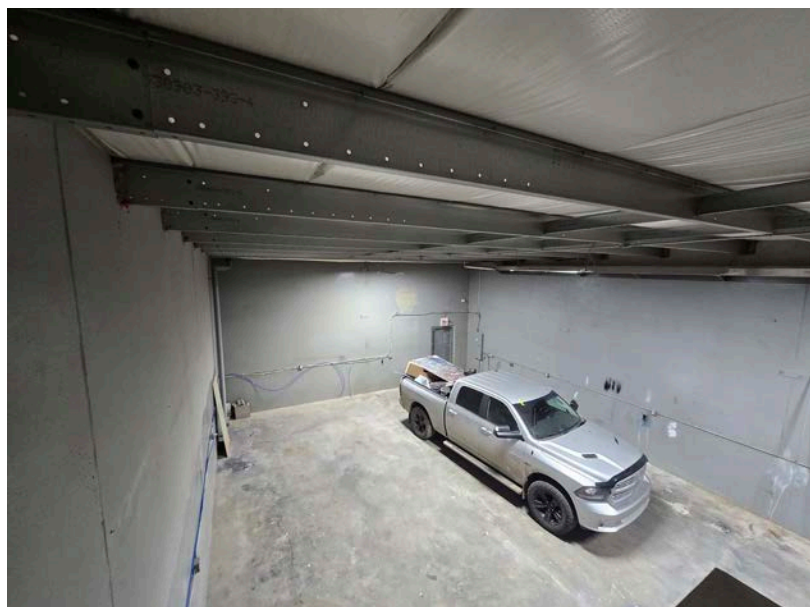
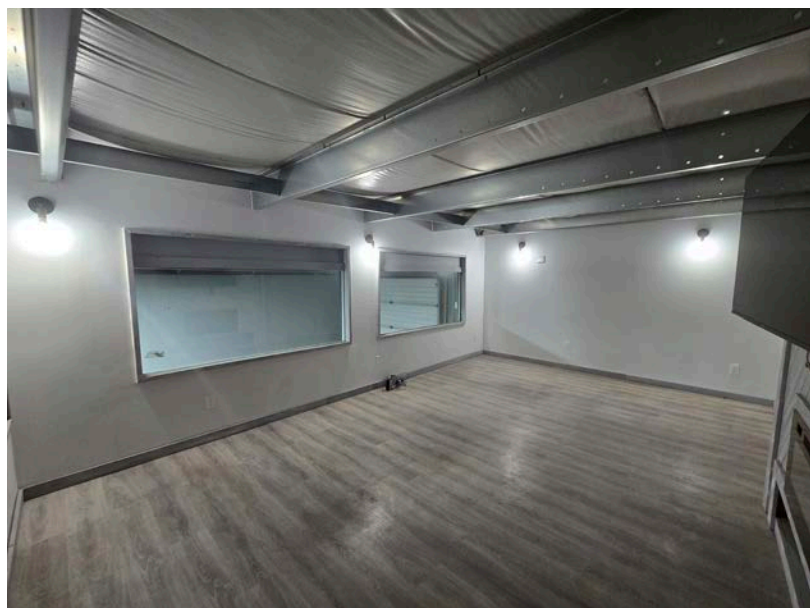
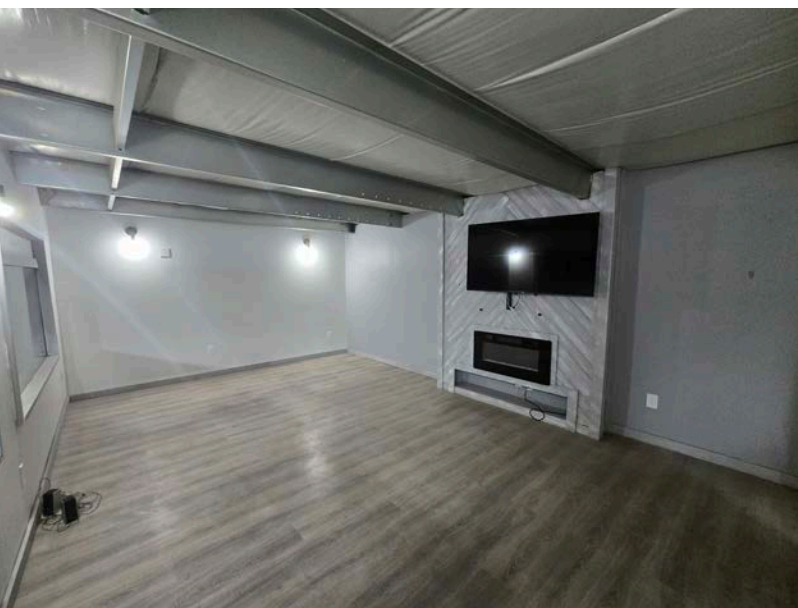
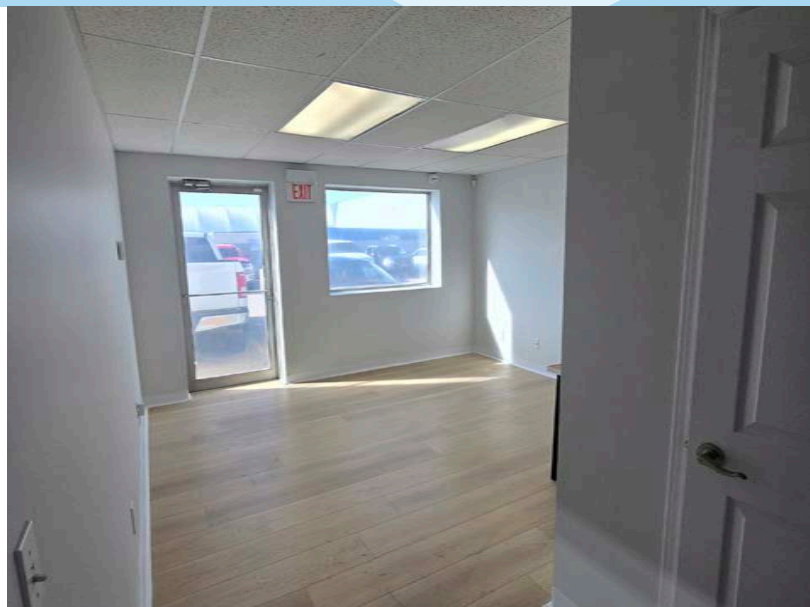
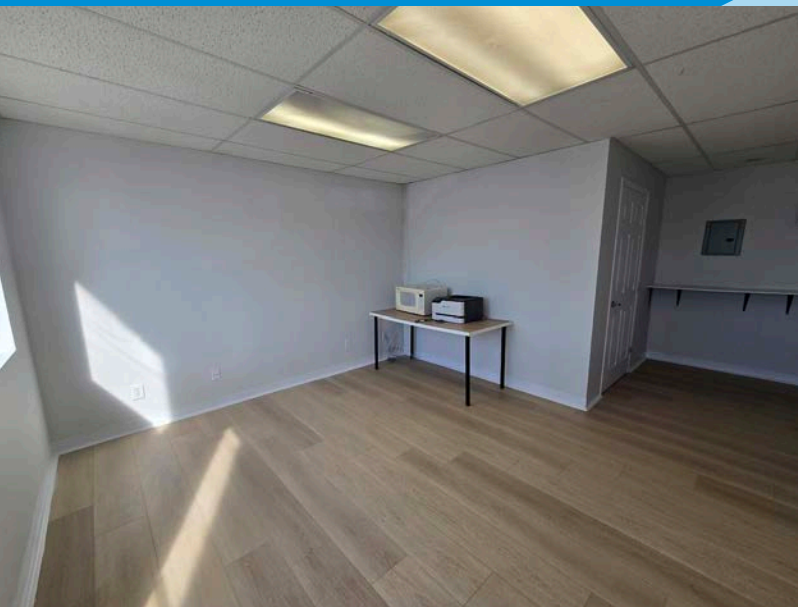


No warranty or representation, expressed or implied, is made as to the accuracy of the information contained herein, and same is submitted subject to errors, omissions, change of price, rental or other conditions, withdrawal without notice, and to any specific listing condition, imposed by our principals.

FOR LEASE

Condo Industrial Bay

LIZOTTE
AND ASSOCIATES REAL ESTATE INC



FOR LEASE

Condo Industrial Bay

LIZOTTE
AND ASSOCIATES REAL ESTATE INC

Property Information

Municipal Address: 5440 - 36 Street NW, Edmonton, AB

Size: 2,200 Sq. Ft. (+/-)

Zoning: IM (Medium Industrial)

Parking: Surface

Power: 225 Amps 120/240 Volt 3 Phase 4 wire

Ceiling Height: 16' Clear

Loading: (1) 10'x14 Grade

Possession: Negotiable

\$\$\$

Lease Rate: \$12.00/Sq. Ft.

Op Costs: \$6.99 Sq. Ft.

Contact

Richard Lizotte

President/Broker

Cell: 780.292.1871

Direct: 780.784.5360

richard@lizotterealestate.com

Lee Berger

Associate Broker

Cell: 587.983.6654

Direct: 780.784.5363

lee@lizotterealestate.com

John Cuglietta

Associate

Cell: 780.340.4384

Direct: 780.784.5357

john@lizotterealestate.com

Cynthia Leduc

Unlicensed Assistant

Direct: 780.784.5359

cynthia@lizotterealestate.com

