

# FOR SALE

±3,125 Sq. Ft.

**LIZOTTE**  
AND ASSOCIATES REAL ESTATE INC



**#228 – 150 Broadway Crescent, Sherwood Park, AB**

## 2ND FLOOR OFFICE CONDO

### Property Highlights

- Well-appointed Offices
- Reception area
- Boardroom
- High-end finishes
- Tile floor in main areas
- Kitchenette



780.488.0888



[www.lizotterealestate.com](http://www.lizotterealestate.com)



#1200, 10117 Jasper Avenue  
Edmonton, AB T5J 1W8



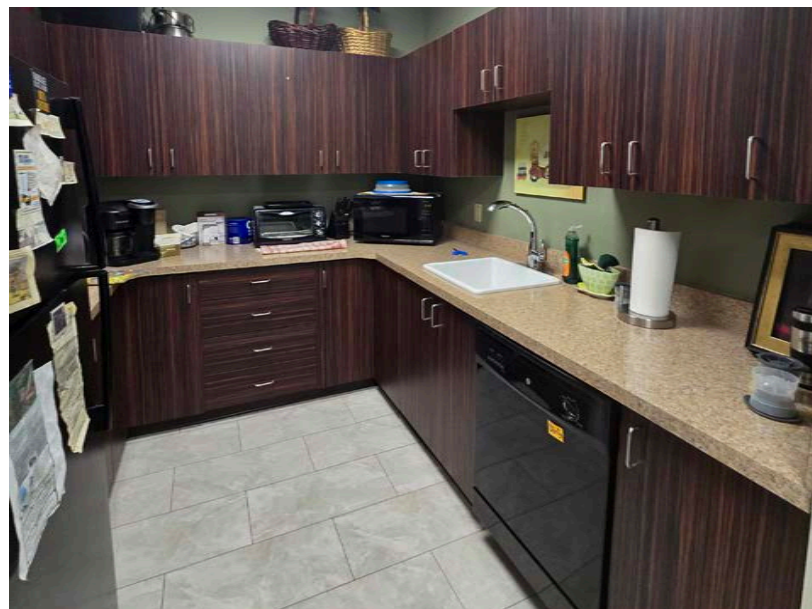
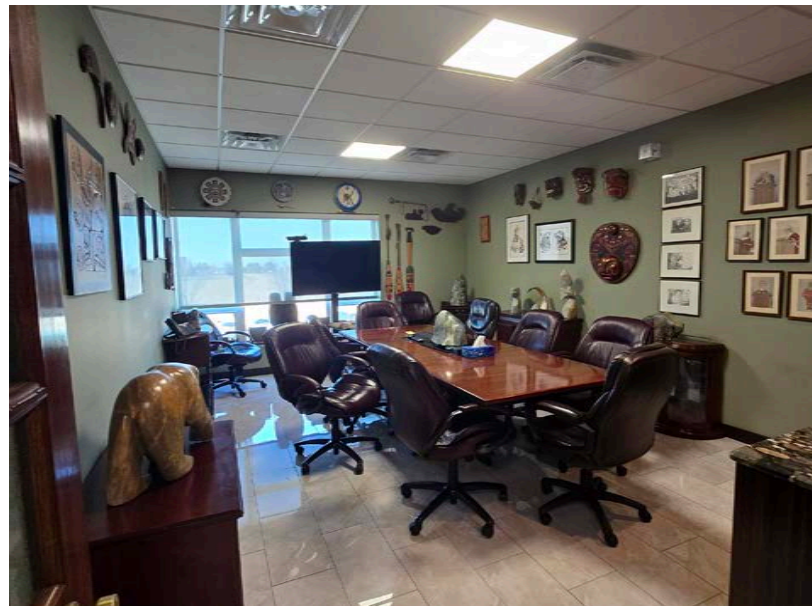
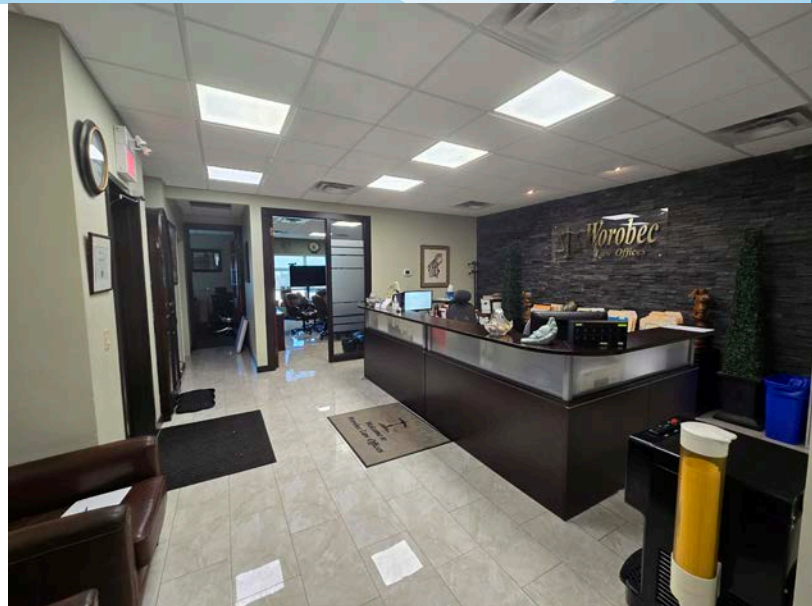
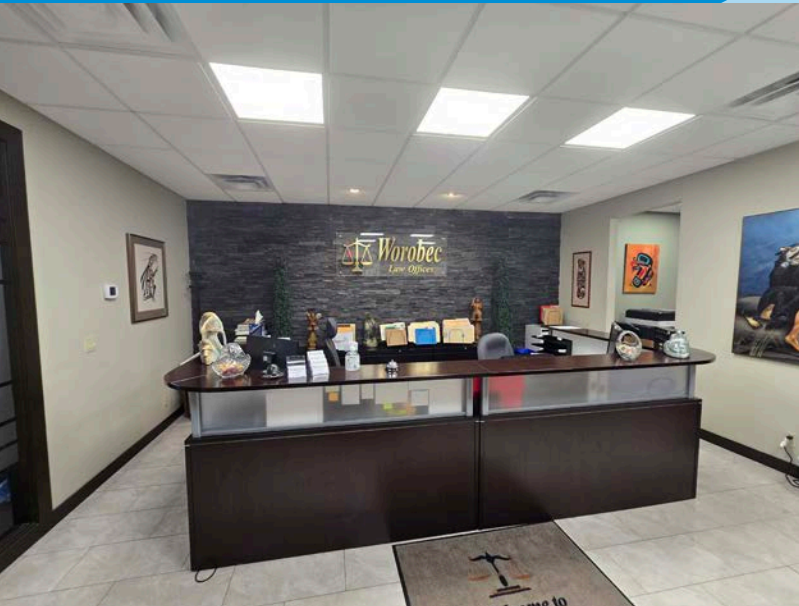
No warranty or representation, expressed or implied, is made as to the accuracy of the information contained herein, and same is submitted subject to errors, omissions, change of price, rental or other conditions, withdrawal without notice, and to any specific listing condition, imposed by our principals.



# FOR SALE

2nd Floor Office Condo

**LIZOTTE**  
AND ASSOCIATES REAL ESTATE INC

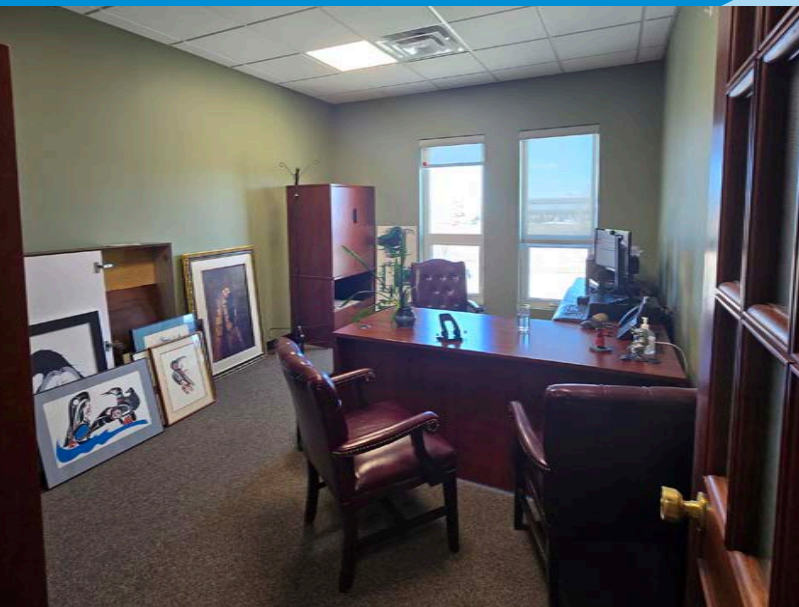




# FOR SALE

2nd Floor Office Condo

**LIZOTTE**  
AND ASSOCIATES REAL ESTATE INC





# FOR SALE

## 2nd Floor Office Condo

**LIZOTTE**  
AND ASSOCIATES REAL ESTATE INC

### Property Information

**Municipal Address:** #228 - 150 Broadway Crescent, Sherwood Park, AB

**Legal Address:** Condominium Plan 1322722 Unit 17&18

**Size:** 3,125 Sq. Ft. (+/-)

**Zoning:** C5 (Service Commercial)

**Parking:** Scramble parking

**Neighbourhood:** Broadview Park

**Possession:** Immediate/negotiable

\$\$\$

**Purchase Price:** \$999,680.00 (\$319.90/sq.ft)

**Taxes:** TBC

### Contact

**Richard Lizotte**

President/Broker

Cell: 780.292.1871

Direct: 780.784.5360

richard@lizotterealestate.com

**Lee Berger**

Associate Broker

Cell: 587.983.6654

Direct: 780.784.5363

lee@lizotterealestate.com

**John Cuglietta**

Associate

Cell: 780.340.4384

Direct: 780.784.5357

john@lizotterealestate.com

**Cynthia Leduc**

Unlicensed Assistant

Direct: 780.784.5359

cynthia@lizotterealestate.com

