

FOR LEASE

±1,607 Sq. Ft.

LIZOTTE
AND ASSOCIATES REAL ESTATE INC



Unit 33, 6726 – 75 Street, Edmonton, AB

PROFESSIONAL SECOND FLOOR OFFICE

Property Highlights

- High-end fully furnished office
- Great office space for commercial practices. (Accounting, insurance, real estate, lawyer, etc.)
- Located in a high-exposure area fronting 75th Street
- Great amenities in the surrounding area
- Easily accessible to Argyll Road, Sherwood Park Fwy, Roper Road, and Whitemud Drive



780.488.0888



www.lizotterealestate.com



#1200, 10117 Jasper Avenue
Edmonton, AB T5J 1W8

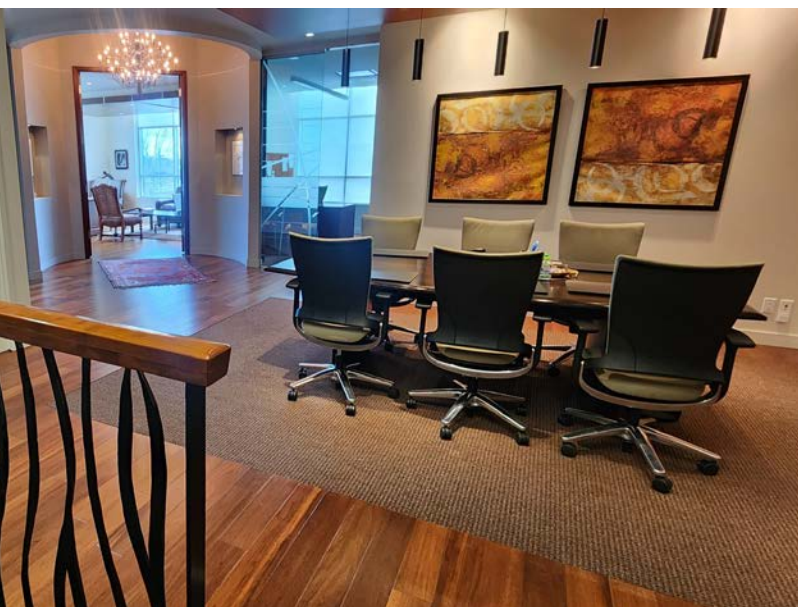


No warranty or representation, expressed or implied, is made as to the accuracy of the information contained herein, and same is submitted subject to errors, omissions, change of price, rental or other conditions, withdrawal without notice, and to any specific listing condition, imposed by our principals.

FOR LEASE

Professional Second Floor Office

LIZOTTE
AND ASSOCIATES REAL ESTATE INC



FOR LEASE

Professional Second Floor Office

LIZOTTE
AND ASSOCIATES REAL ESTATE INC



FOR LEASE

Professional Second Floor Office

LIZOTTE
AND ASSOCIATES REAL ESTATE INC

Property Information

Municipal Address: Unit 33, 6726 - 75 Street, Edmonton, AB

Legal Address: Plan 0320769 Unit 33

Size: 1,607 Sq. Ft. (+/-)

Zoning: BE (Business Employment)

Parking: Ample parking

Possession: Immediate/negotiable

\$\$\$

Lease Rate: \$20.90/Sq. Ft.

Op Costs: \$8.57/Sq. Ft.
*Includes condo fees and property tax

Contact

Richard Lizotte

President/Broker
Cell: 780.292.1871
Direct: 780.784.5360
richard@lizotterealestate.com

John Cuglietta

Associate
Cell: 780.340.4384
Direct: 780.784.5357
john@lizotterealestate.com

Lee Berger

Associate Broker
Cell: 587.983.6654
Direct: 780.784.5363
lee@lizotterealestate.com

Cynthia Leduc

Unlicensed Assistant
Direct: 780.784.5359
cynthia@lizotterealestate.com

