

FOR LEASE

835 Sq. Ft. (+/-)

LIZOTTE

AND ASSOCIATES REAL ESTATE INC



#204 – 10525 Jasper Ave, Edmonton, AB

ATTIA BUILDING OFFICE SPACE

Property Highlights

- Last remaining vacancy in the building
- Substantial improvements to the building in the past 5 years
- Good mix of tenants in the building, law firm, engineering firm, fire safety company, and marketing company on the second floor
- On-site management
- Ideal for professional users



780.488.0888



www.lizotterealestate.com



#1200, 10117 Jasper Avenue
Edmonton, AB T5J 1W8



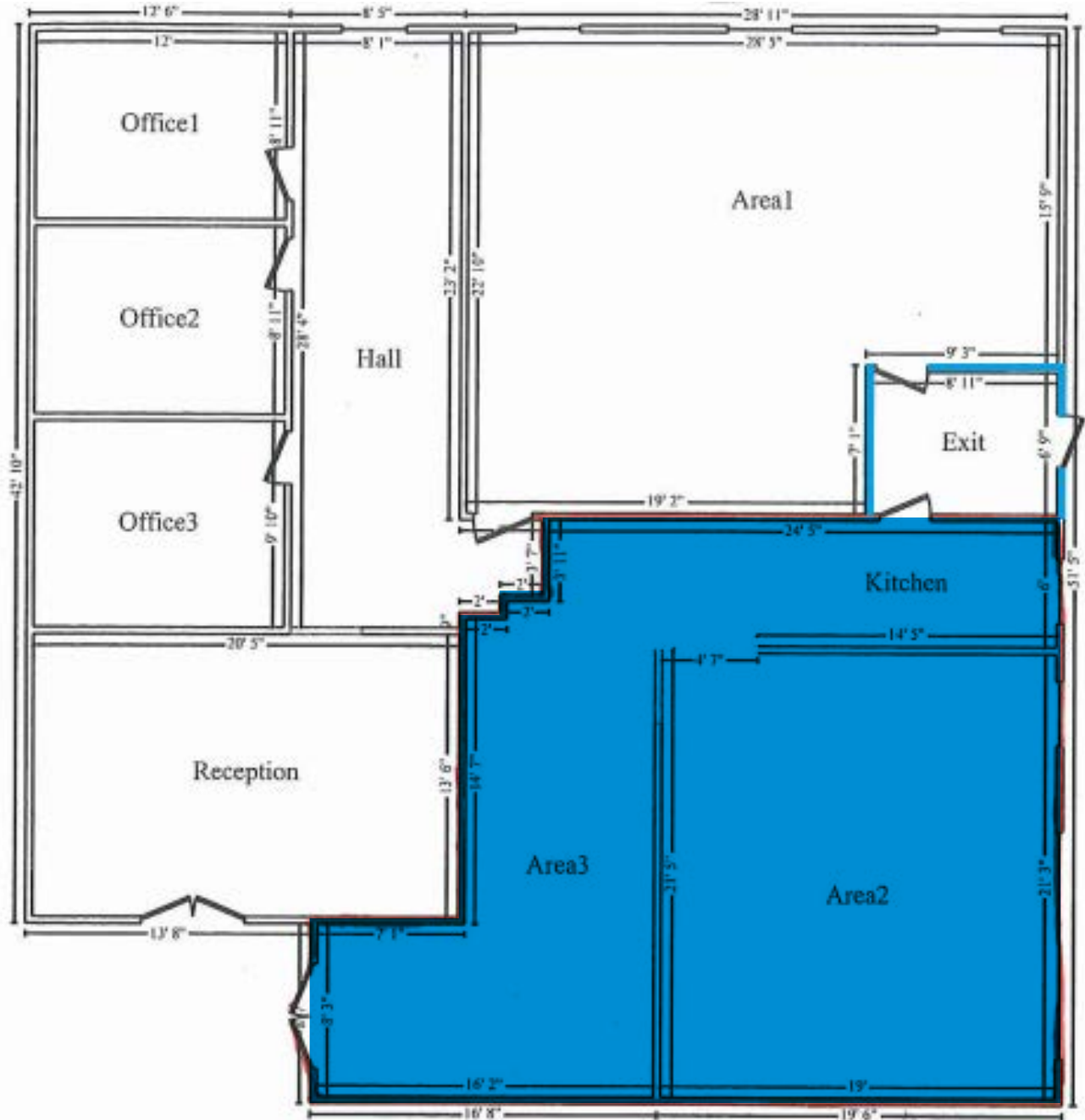
No warranty or representation, expressed or implied, is made as to the accuracy of the information contained herein, and same is submitted subject to errors, omissions, change of price, rental or other conditions, withdrawal without notice, and to any specific listing condition, imposed by our principals.

FOR LEASE

Attia Building Office Space

LIZOTTE
AND ASSOCIATES REAL ESTATE INC

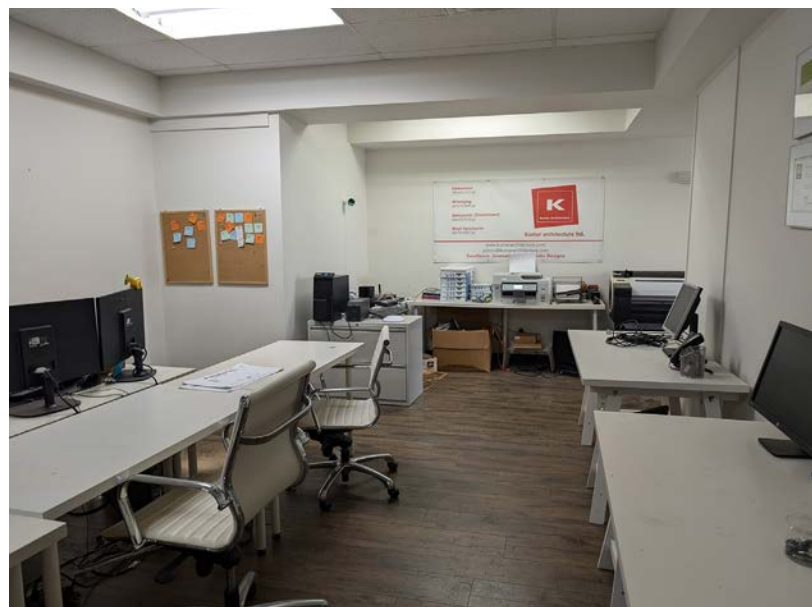
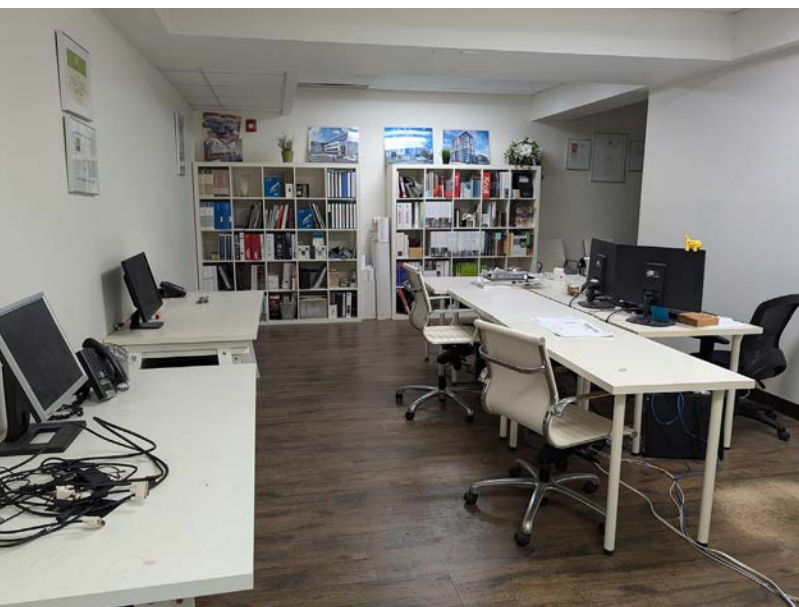
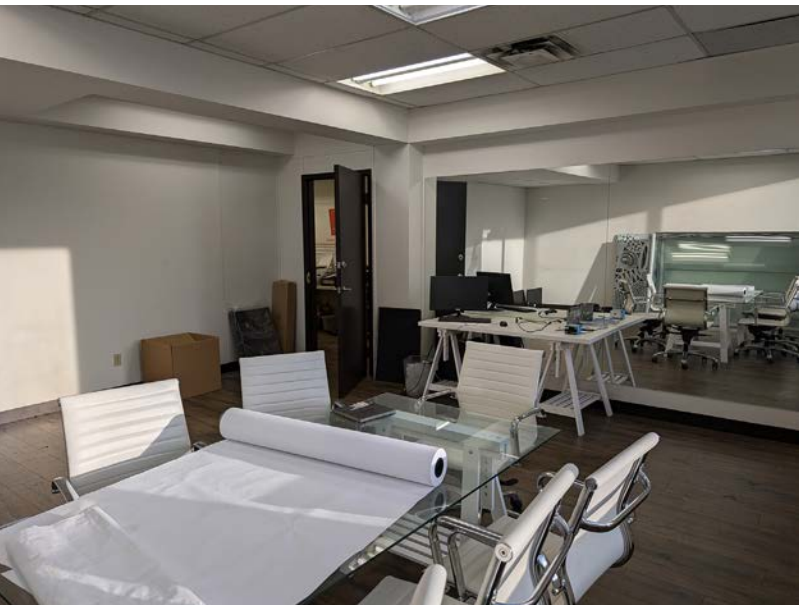
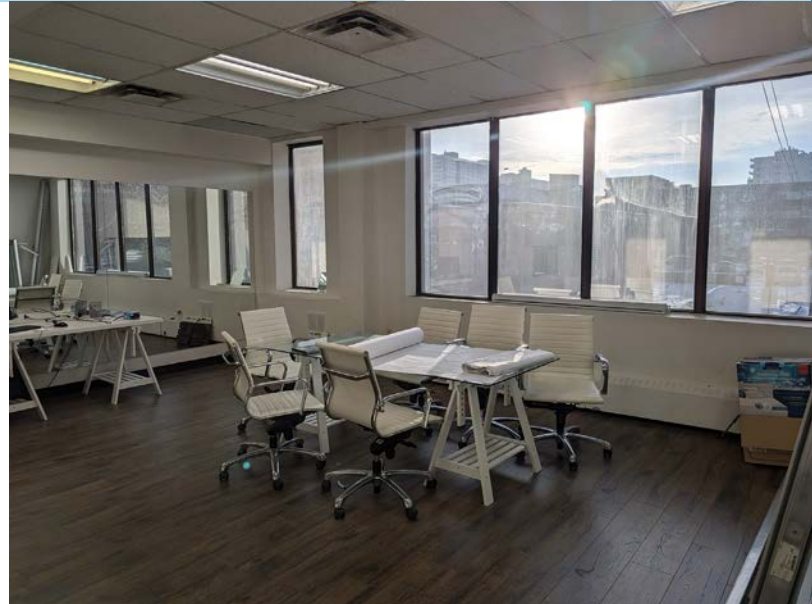
Floor Plan



FOR LEASE

Attia Building Office Space

LIZOTTE
AND ASSOCIATES REAL ESTATE INC



FOR LEASE

Attia Building Office Space

LIZOTTE
AND ASSOCIATES REAL ESTATE INC

Property Information

Municipal Address: Unit 204 - 10525 Jasper Ave, Edmonton, AB

Size: 835 Sq. Ft. (+/-)

Zoning: JAMSC (Jasper Avenue Main Street Commercial)

Parking: Negotiable

Year Built: 1960 | **Renovated** 2018

Possession: Immediate/negotiable

\$\$\$

Lease Rate: \$16.00/Sq. Ft.

OP Costs: \$11.00/Sq. Ft.

Contact

Chuck Clubine

Senior Associate
Cell: 780.264.7773
Direct: 780.784.6553
chuck@lizotterealestate.com

Tom Dean

Associate
Cell: 780.920.8019
Direct: 780.784.6550
tom@lizotterealestate.com

Vada Giguere

Executive Assistant
Direct: 780.784.6556
vada@lizotterealestate.com

