

FOR SALE

±41.37 Acres

LIZOTTE

AND ASSOCIATES REAL ESTATE INC



51042 Range Road 243, Leduc County, AB

FUTURE INDUSTRIAL DEVELOPMENT LAND

Property Highlights

- Direct access onto RR 243, minutes from Spine Road
- Part of Major Employment ASP
- Primary development ideal for logistics, warehousing and agribusiness
- Secondary developments may include commercial, retail, and hospitality
- Irvine creek flows through the property
- ASP available



780.488.0888



www.lizotterealestate.com



#1200, 10117 Jasper Avenue
Edmonton, AB T5J 1W8

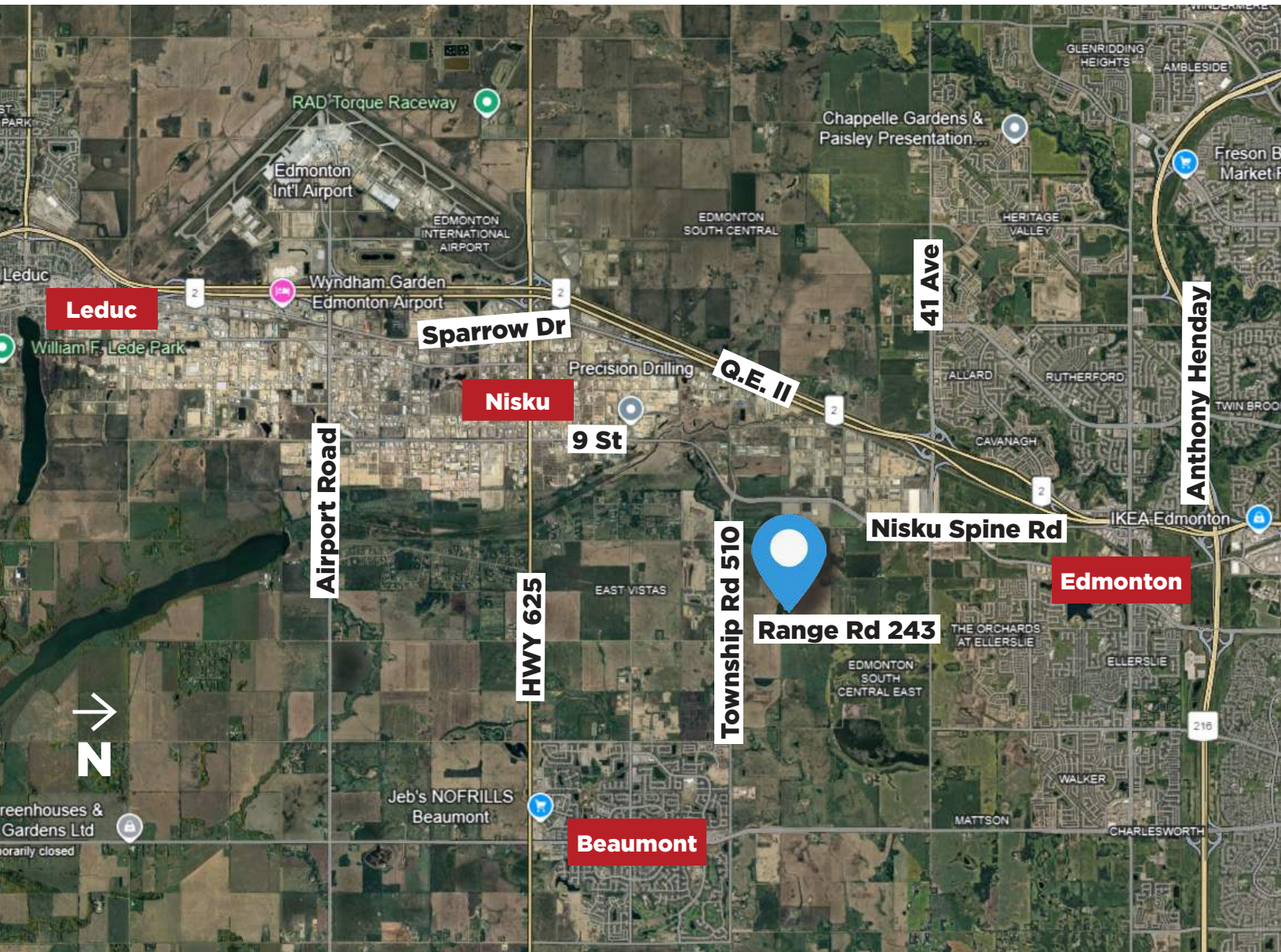


No warranty or representation, expressed or implied, is made as to the accuracy of the information contained herein, and same is submitted subject to errors, omissions, change of price, rental or other conditions, withdrawal without notice, and to any specific listing condition, imposed by our principals.

FOR SALE

North Nisku Future Industrial Development Land

LIZOTTE
AND ASSOCIATES REAL ESTATE INC



FOR SALE

North Nisku Future Industrial Development Land

LIZOTTE
AND ASSOCIATES REAL ESTATE INC

Property Information

Municipal Address: 51042 Range Road 243, Leduc County, AB

Legal Address: NE - 04 - 51 - 24 - W4M

Size: 41.37 Acres (+/-)

Zoning: AG (Agriculture)

Possession: Negotiable

\$\$\$

Purchase Price: \$110,000.00/Acre

Contact

Richard Lizotte

President/Broker

Cell: 780.292.1871

Direct: 780.784.5360

richard@lizotterealestate.com

Lee Berger

Associate Broker

Cell: 587.983.6654

Direct: 780.784.5363

lee@lizotterealestate.com

John Cuglietta

Unlicensed Assistant

Cell: 780.340.4384

Direct: 780.784.5357

john@lizotterealestate.com

