

# FOR SALE

1,500 Sq. Ft. (+/-)

# LIZOTTE

AND ASSOCIATES REAL ESTATE INC



**Unit 104, 10265 107 Street, Edmonton, AB**

## **BEATTY LOFTS DOWNTOWN CONDO - MIXED-USE**

### **Property Highlights**

- Mixed-use building - flexible zoning
- Other tenants include: Accounting, Photography, Marketing and, Financial Services
- Ideal for office users, media studio, personal services, live/work
- Quick access to downtown - 2 blocks from Rogers Place



780.488.0888



[www.lizotterealestate.com](http://www.lizotterealestate.com)



#1200, 10117 Jasper Avenue  
Edmonton, AB T5J 1W8

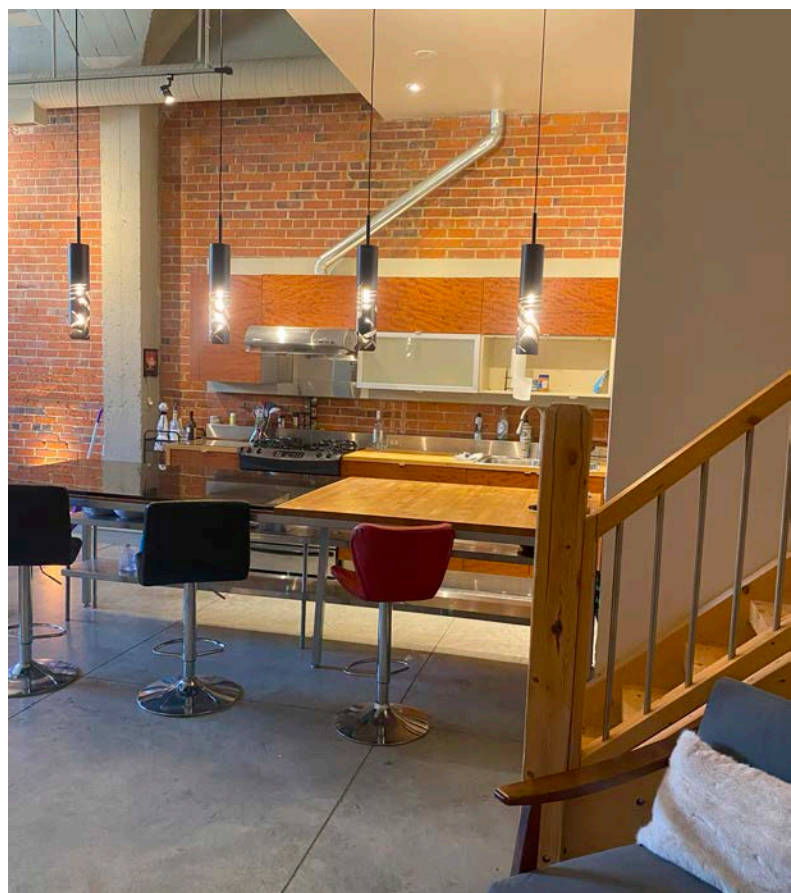
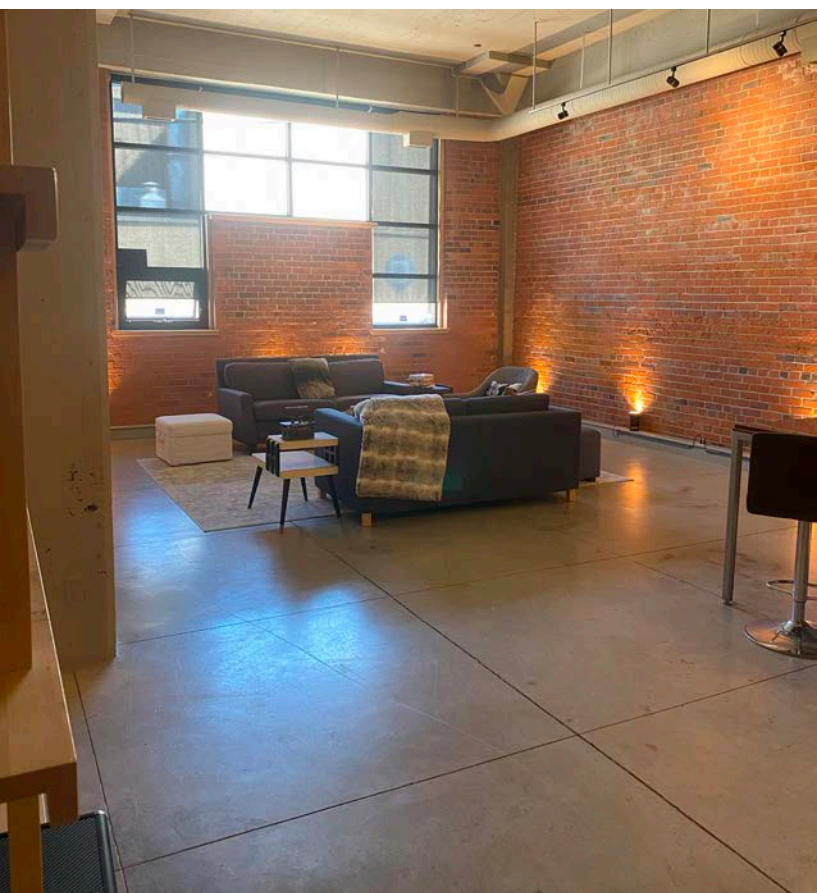
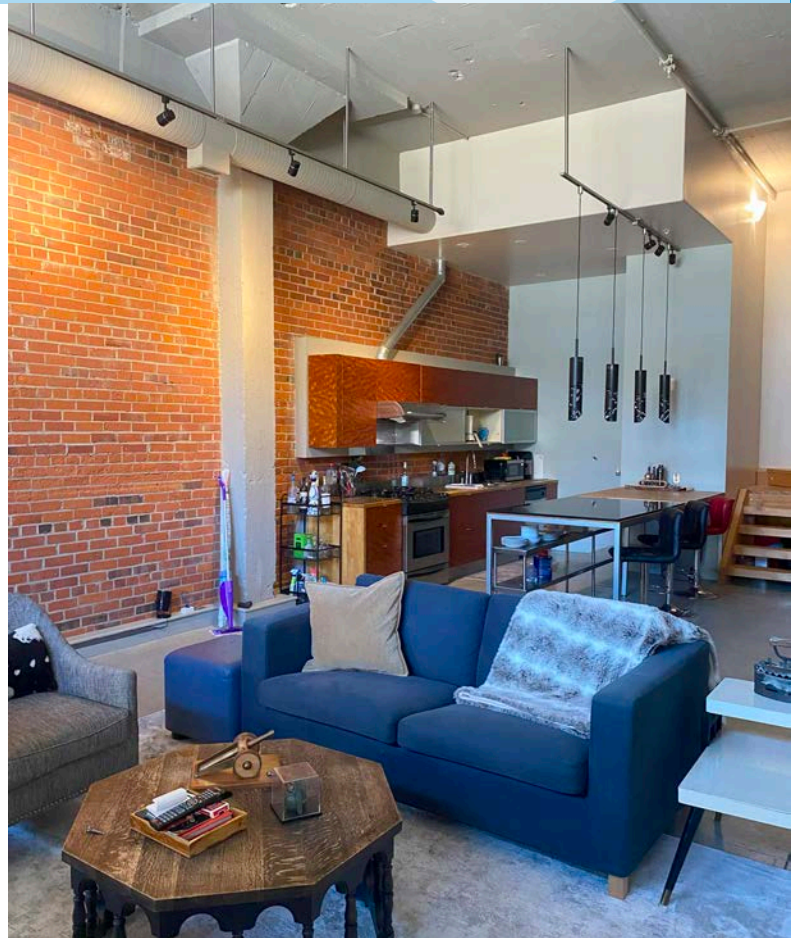


No warranty or representation, expressed or implied, is made as to the accuracy of the information contained herein, and same is submitted subject to errors, omissions, change of price, rental or other conditions, withdrawal without notice, and to any specific listing condition, imposed by our principals.

# FOR SALE

Beatty Lofts Downtown Condo - Mixed-Use

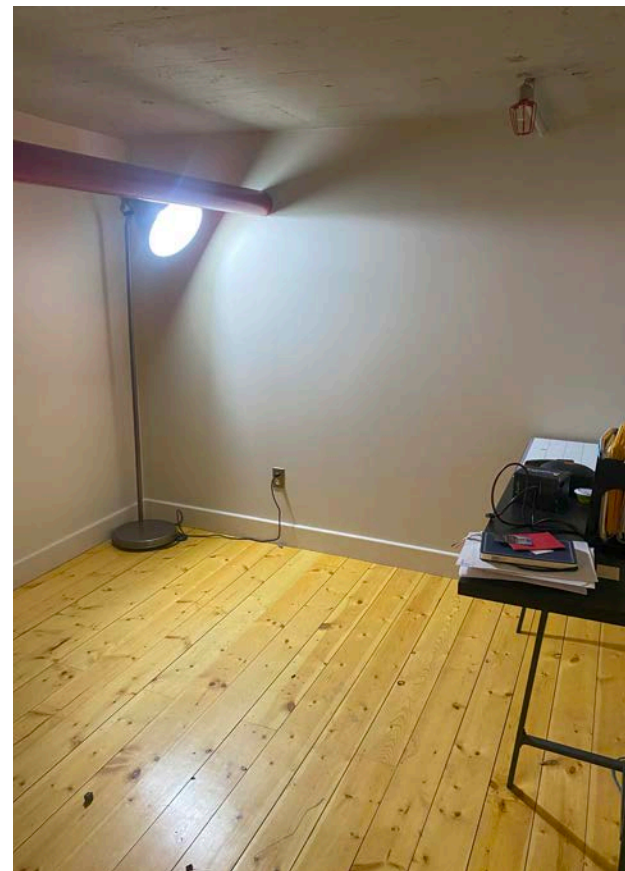
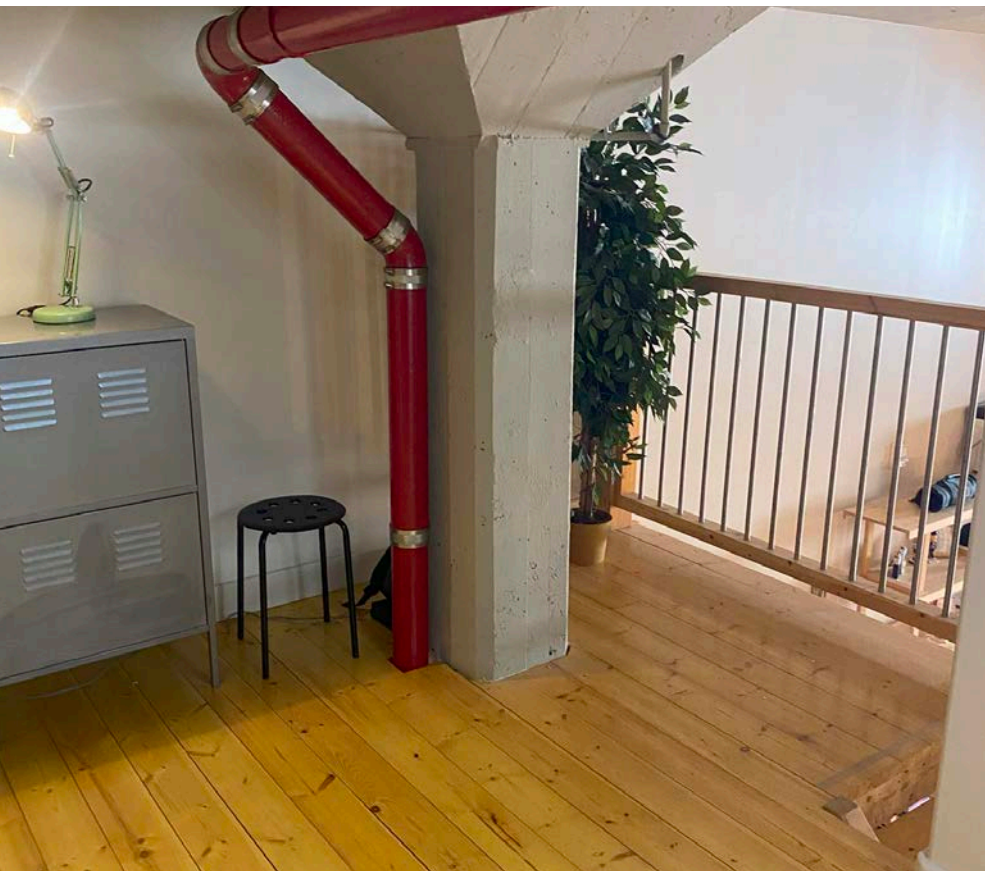
**LIZOTTE**  
AND ASSOCIATES REAL ESTATE INC



# FOR SALE

Beatty Lofts Downtown Condo - Mixed-Use

**LIZOTTE**  
AND ASSOCIATES REAL ESTATE INC



# FOR SALE

Beatty Lofts Downtown Condo - Mixed-Use

# LIZOTTE

AND ASSOCIATES REAL ESTATE INC

## Property Information

**Municipal Address:** Unit 104, 10265 - 107 Street, Edmonton

**Size:** 1,500 Sq. Ft. (+/-)

**Zoning:** UW

**Parking:** Lot #338  
Reserved Parking is \$350/month  
Random Parking is \$264/month

**Possession:** Immediate

\$\$\$

**Purchase Price:** \$475,000.00

**Condo Fee:** \$1,131.32.00/Month  
\*Power and Internet **not** included

**Property Taxes:** \$330.65/Month

## Contact

**Chuck Clubine**  
Senior Associate  
Cell: 780.264.7773  
Direct: 780.784.6553  
chuck@lizottterestate.com

**Tom Dean**  
Associate  
Cell: 780.920.8019  
Direct: 780.784.6550  
tom@lizottterestate.com

**Vada Giguere**  
Unlicensed Assistant  
Direct: 780.784.6556  
vada@lizottterestate.com

