

FOR LEASE

1,600 Sq. Ft. (+/-)

LIZOTTE

AND ASSOCIATES REAL ESTATE INC



10760 82 Avenue, Edmonton, AB

WHYTE AVENUE RETAIL SPACE

Property Highlights

- Below market lease rates.
- Immediate move-in incentives offered.
- Ideal for a specialty retail store, comic/gaming store, vape shop, professional massage and chiropractic clinic, accounting firm, or law offices.
- Located on the highly sought-after retail corridor of Whyte Ave.
- Neighbors include Avila Arepa, Hexagon Coffee, H&R Block, Panago, Sole Experience, and Tops Food Store.



780.488.0888



www.lizotterealestate.com



#1200, 10117 Jasper Avenue
Edmonton, AB T5J 1W8

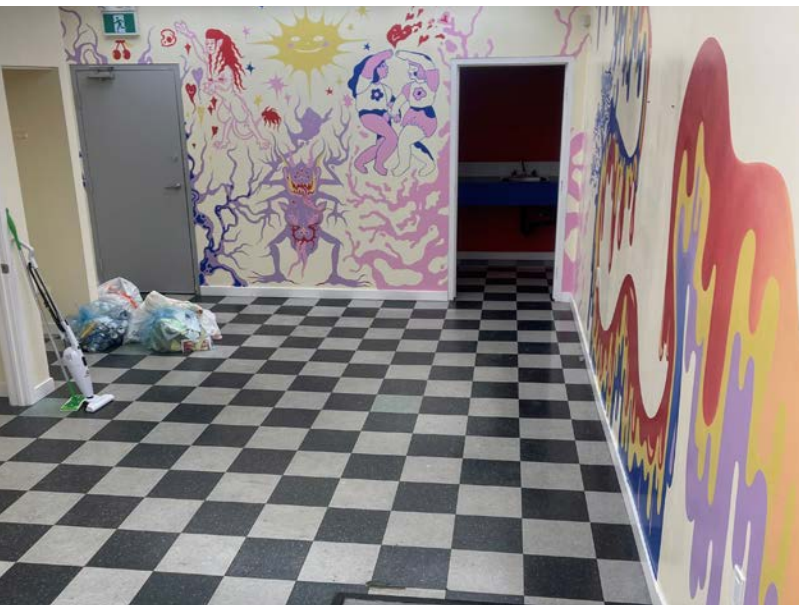
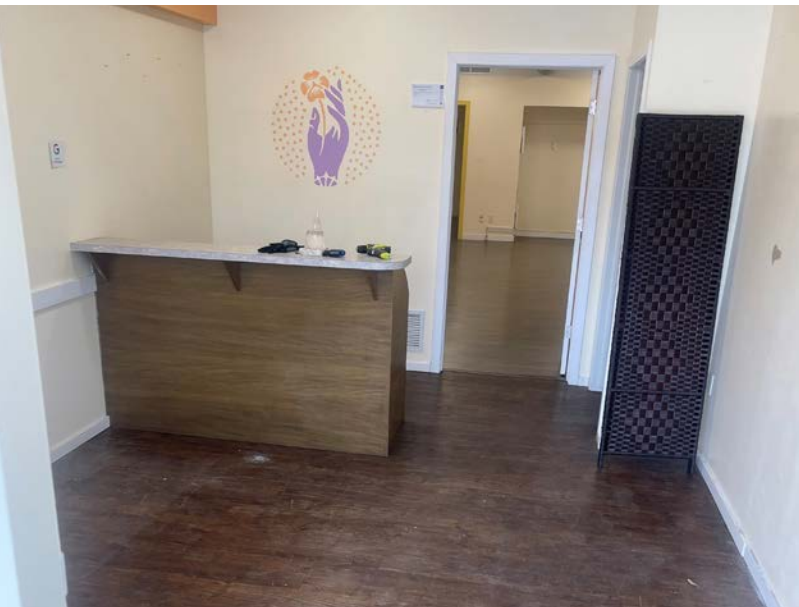


No warranty or representation, expressed or implied, is made as to the accuracy of the information contained herein, and same is submitted subject to errors, omissions, change of price, rental or other conditions, withdrawal without notice, and to any specific listing condition, imposed by our principals.

FOR LEASE

Whyte Avenue Retail Space

LIZOTTE
AND ASSOCIATES REAL ESTATE INC



FOR LEASE

Whyte Avenue Retail Space

LIZOTTE
AND ASSOCIATES REAL ESTATE INC

Property Information

Municipal Address: 10760 B - 82 Avenue Edmonton, AB

Legal Address: Lot 15, Block 132, Plan RN4

Size: 1,600 Sq. Ft. (+/-)

Zoning: MU (Mixed-Use)

Parking: Street front parking and
1-2 designated parking stalls at rear

Possession: Immediate/negotiable

\$\$\$

Lease Rate: \$25.00/Sq. Ft.

Op Costs: \$9.50/Sq. Ft.

Contact

David J. Olson

Senior Associate
Cell: 780.908.1650
Direct: 780.784.5356
david@lizottterestate.com

Justin Sorensen

Associate
Cell: 780.257.6860
Direct: 780.784.9581
justin@lizottterestate.com

Cynthia Leduc

Unlicensed Assistant
Direct: 780.784.5359
cynthia@lizottterestate.com

Demographics within 5KM

