

FOR LEASE

1,400 Sq. Ft. (+/-)

LIZOTTE

AND ASSOCIATES REAL ESTATE INC



12816 82 Street NW, Edmonton, AB

FORMER DENTURE CLINIC SPACE

Property Highlights

- Fully built-out denture clinic space
- Multiple pylon signage opportunities
- Great visibility from 82 street
- Easy access to Yellowhead, Anthony Henday and 137 street



780.488.0888



www.lizotterealestate.com



#1200, 10117 Jasper Avenue
Edmonton, AB T5J 1W8



No warranty or representation, expressed or implied, is made as to the accuracy of the information contained herein, and same is submitted subject to errors, omissions, change of price, rental or other conditions, withdrawal without notice, and to any specific listing condition, imposed by our principals.

FOR LEASE

RETAIL/MEDICAL SPACE

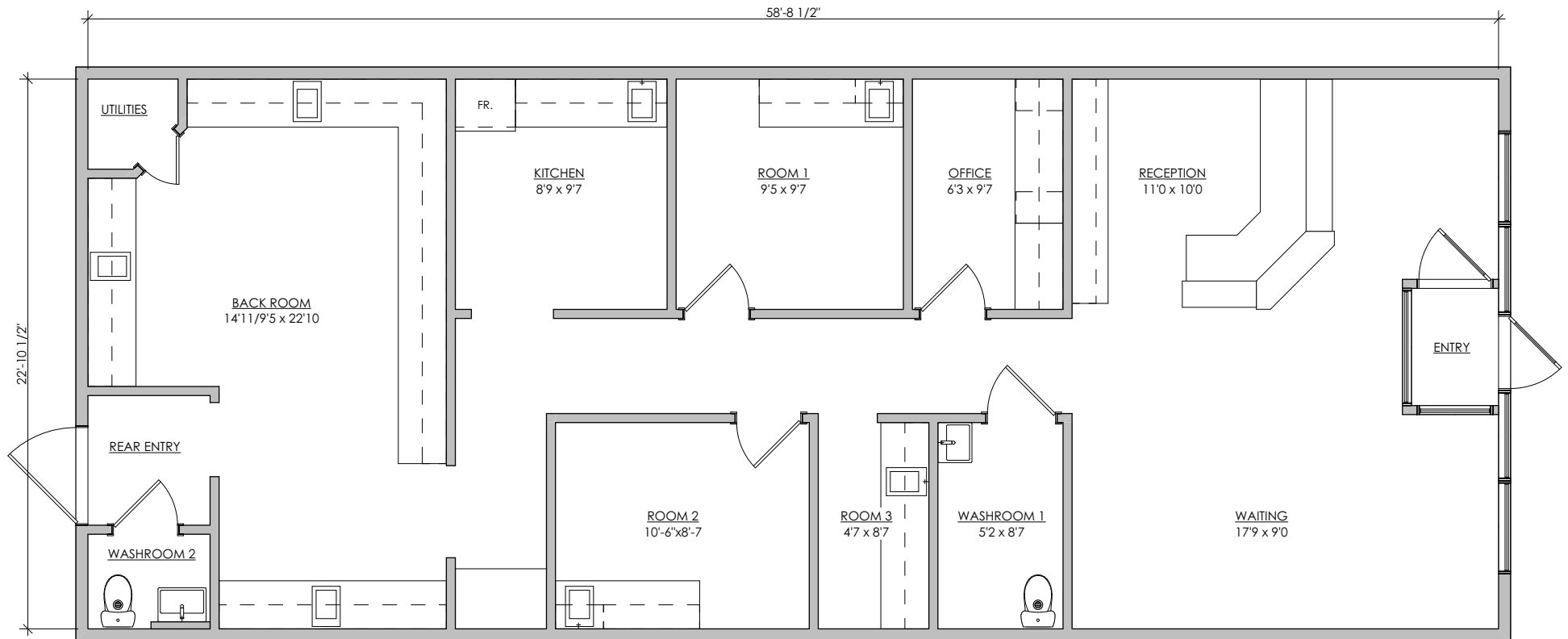
LIZOTTE
AND ASSOCIATES REAL ESTATE INC



FOR LEASE

RETAIL/MEDICAL SPACE

Floor Plan



FOR LEASE

RETAIL/MEDICAL SPACE

LIZOTTE
AND ASSOCIATES REAL ESTATE INC

Property Information

Municipal Address: 12816 82 Street NW, Edmonton, AB

Size: 1,400 Sq. Ft. (+/-)

Zoning: MU (Mixed Use)

Parking: Ample scramble parking

Possession: Immediate/negotiable

\$\$\$

Lease Rate: \$20.00/Sq. Ft.

Op Costs: \$13.50/Sq. Ft. (2023) Estimate

Contact

David J. Olson
Senior Associate
Cell: 780.908.1650
Direct: 780.784.5356
david@lizotterealestate.com

Justin Sorensen
Associate
Cell: 780.257.6860
Direct: 780.784.9581
justin@lizotterealestate.com

Demographics within 5KM

