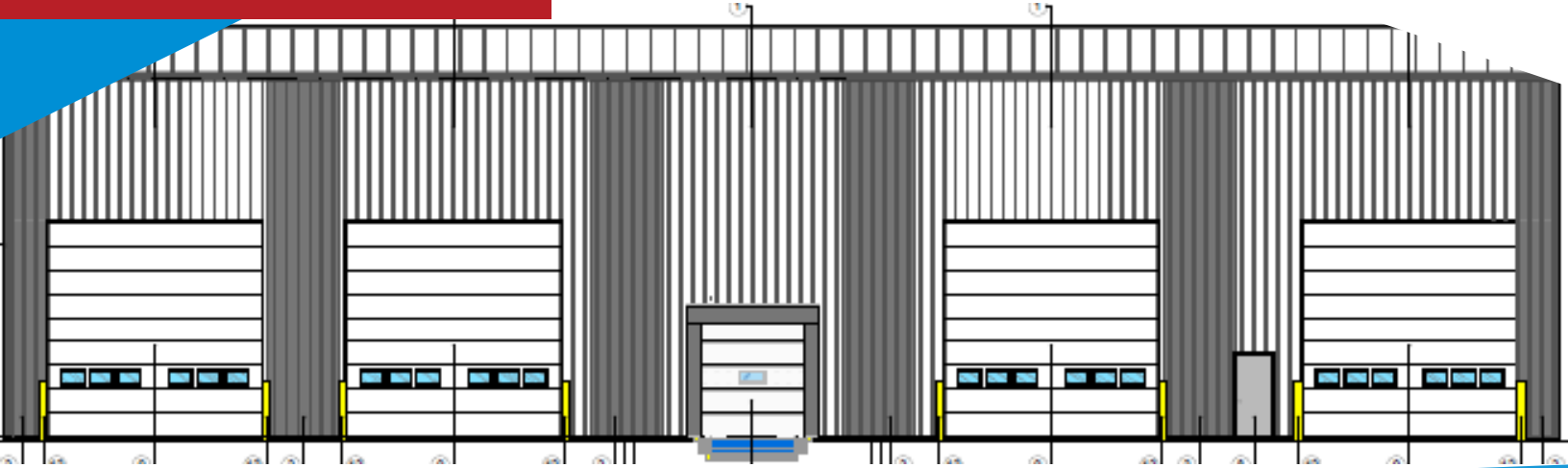


FOR LEASE

15,600 Sq. Ft.

LIZOTTE
AND ASSOCIATES REAL ESTATE INC

**CONSTRUCTION
IN PROGRESS**



7110 - 42 Street, Leduc, AB

NEW INDUSTRIAL BUILDING

Property Highlights

- New - Pre engineered construction (completion Q3 2024)
- Close proximity to the Q.E. II Highway
- Trench drain/dual compartment sump
- Multiple washrooms
- Drive-thru bay
- Loading dock
- Epoxy finished flooring
- Quality office build-out
- Lunch room



780.488.0888



www.lizotterealestate.com



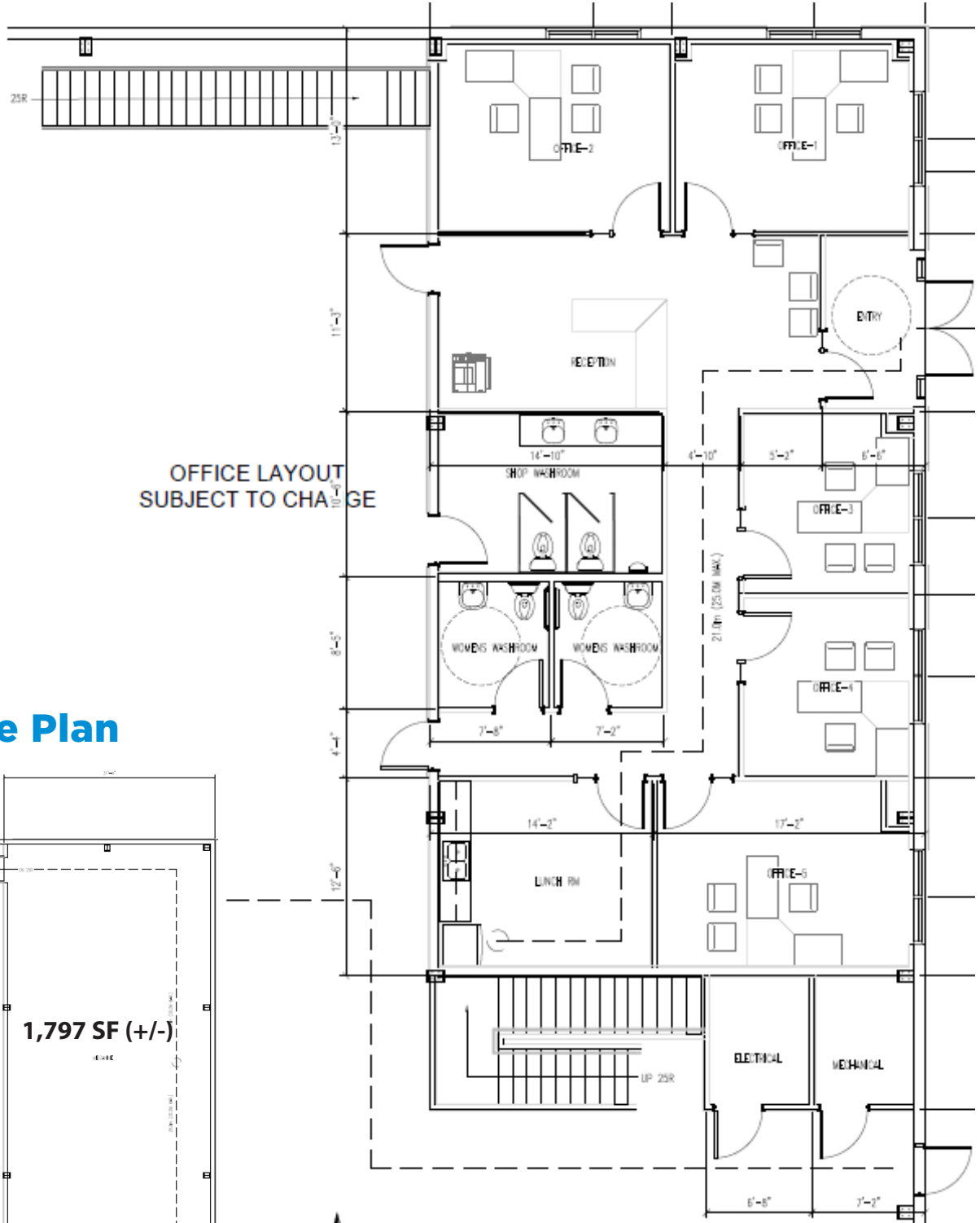
#1200, 10117 Jasper Avenue
Edmonton, AB T5J 1W8

No warranty or representation, expressed or implied, is made as to the accuracy of the information contained herein, and same is submitted subject to errors, omissions, change of price, rental or other conditions, withdrawal without notice, and to any specific listing condition, imposed by our principals.

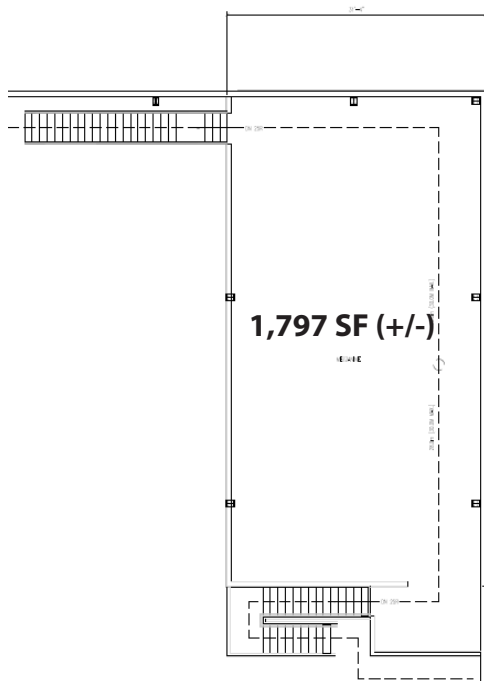
FOR LEASE

New Industrial Building

Office Layout



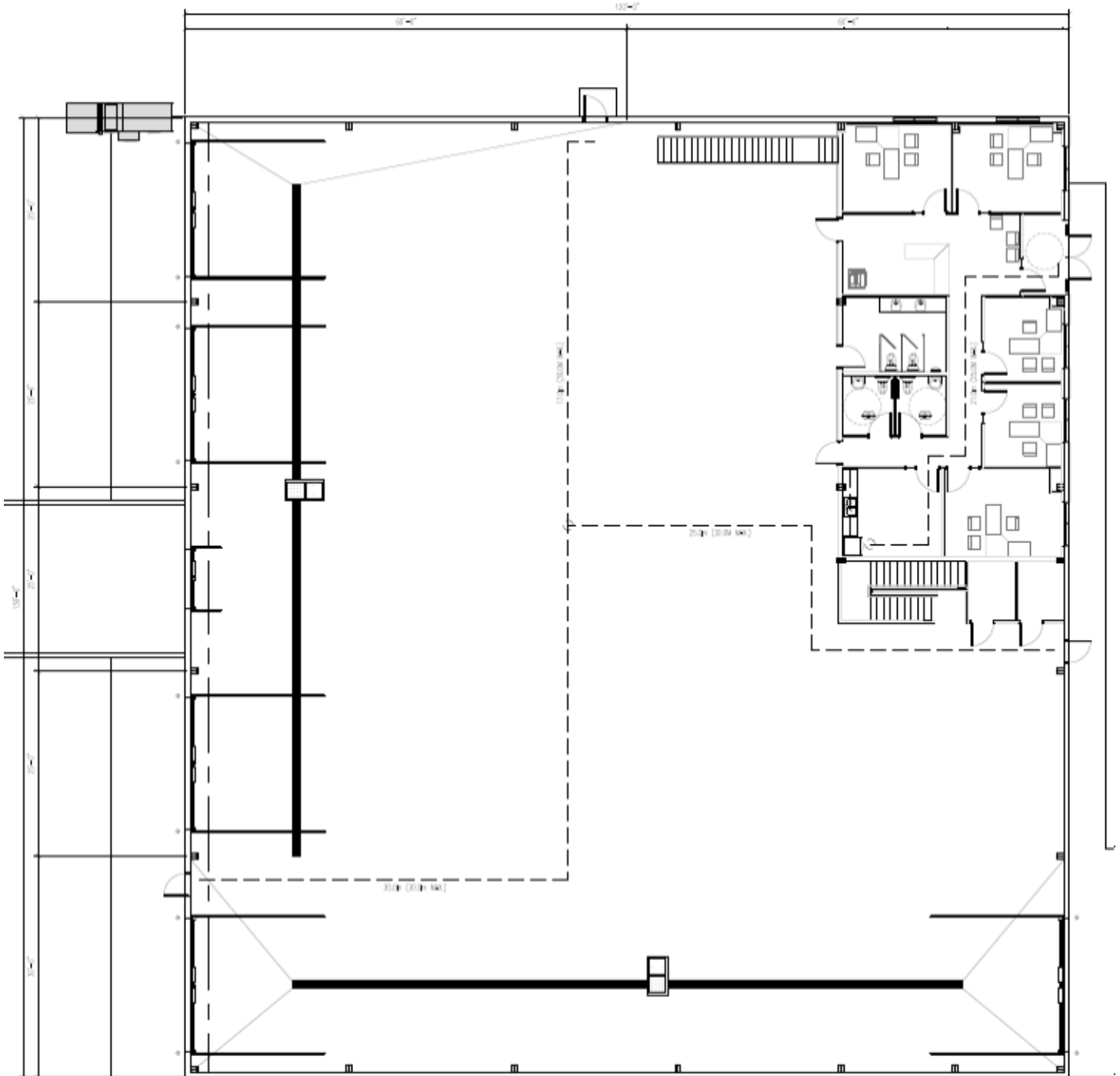
Mezzanine Plan



FOR LEASE

New Industrial Building

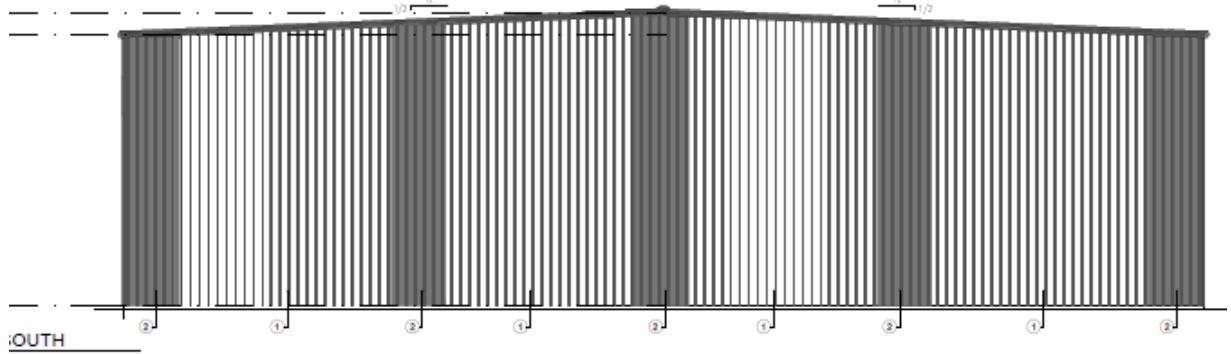
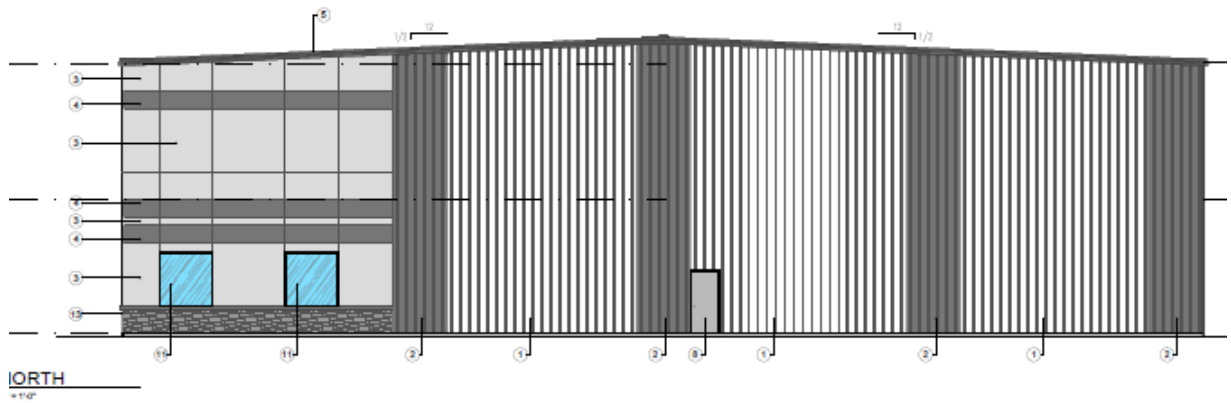
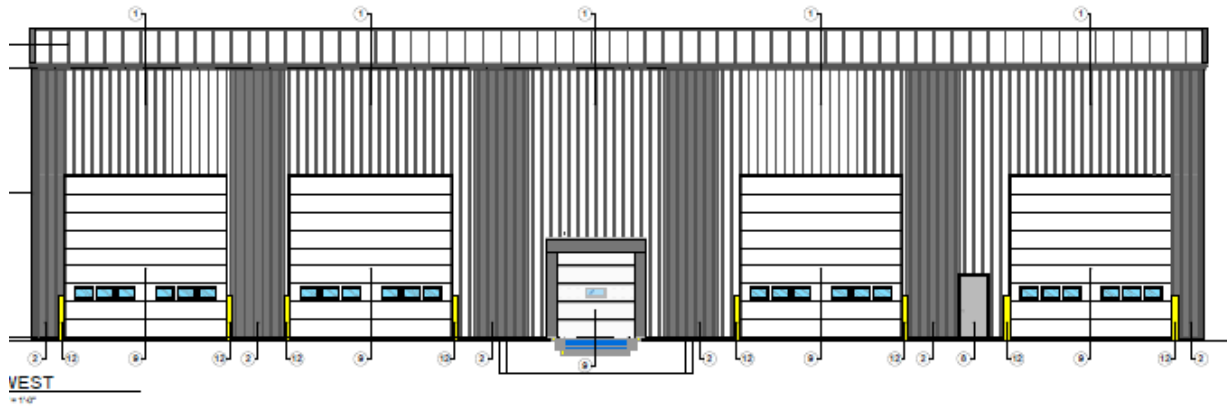
Warehouse Plan



FOR LEASE

New Industrial Building

LIZOTTE
AND ASSOCIATES REAL ESTATE INC



FOR LEASE

New Industrial Building

LIZOTTE
AND ASSOCIATES REAL ESTATE INC

Property Information

Municipal Address: 7110 - 42 Street, Leduc, AB

Legal Address: Plan: 072 8071 Blk: 12 Lot: 1

Building Size: 15,600 Sq. Ft. (+/-)

Lot Size: 1.52 Acres (+/-)

Zoning: IM (Medium Industrial)

Parking: Ample Paved Parking

Power: TBC

Sumps: 2 Dual Compartment

Ceiling Height: 30' Eve Height

Loading: (5) 18'x18' | (1) Grade

Completion Date: Q3 2024

\$\$\$

Lease Rate: \$18/Sq.Ft

Contact

Richard Lizotte

President/Broker

Cell: 780.292.1871

Direct: 780.784.5360

richard@lizotterealestate.com

John Cuglietta

Unlicensed Assistant

Cell: 780.340.4384

Direct: 780.784.5357

john@lizotterealestate.com

Lee Berger

Associate Broker

Cell: 587.983.6654

Direct: 780.784.5363

lee@lizotterealestate.com

Soudabeh Mobin

Unlicensed Assistant

Cell: 780.340.9595

Direct: 780.784.9583

soudabeh@lizotterealestate.com

