

FOR LEASE

3,161 Sq. Ft. (+/-)

LIZOTTE

AND ASSOCIATES REAL ESTATE INC



15109 Stony Plain Road, Edmonton, AB

TURN-KEY YOGA SPACE

Property Highlights

- Located in major power centre “Revolution Square” on the corner of 151 Street and Stony Plain Road
- Main floor unit is a fully built-out yoga space
- Excellent visibility with lots of natural light
- Join neighboring tenants: Revolution Cycle, Fashion Tailors Ltd., Doggy Style Deli, and many more
- Ample on-site parking



780.488.0888



www.lizotterealestate.com



#1200, 10117 Jasper Avenue
Edmonton, AB T5J 1W8

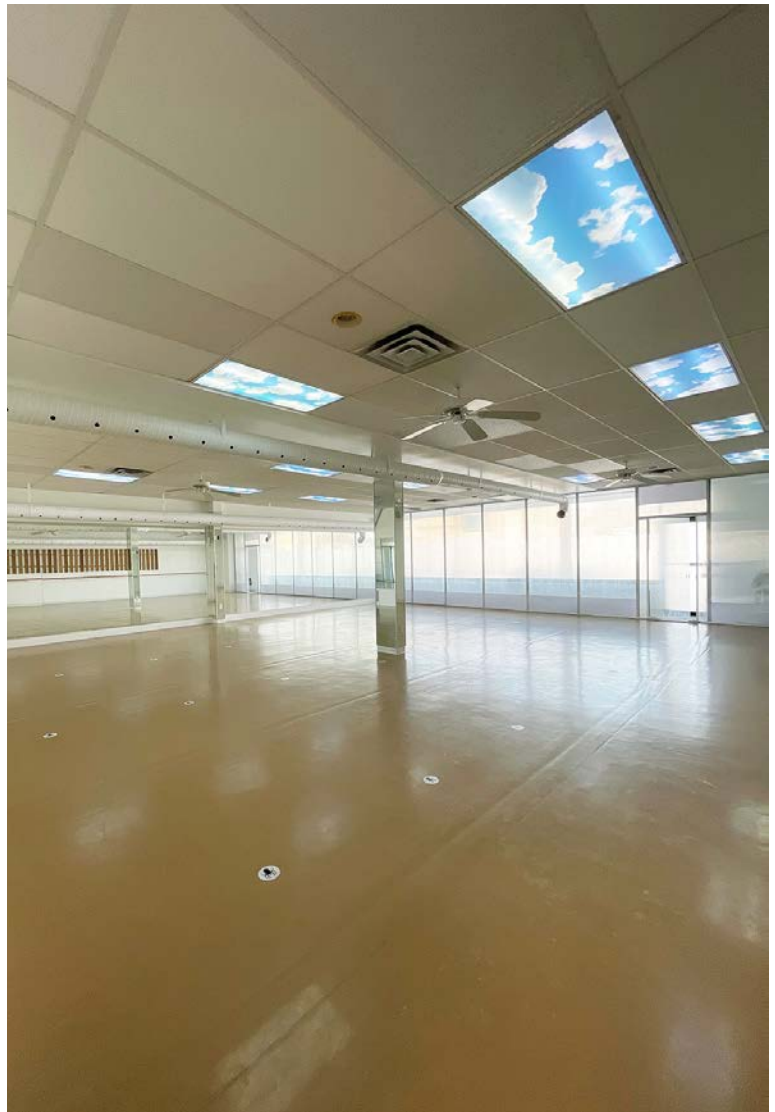
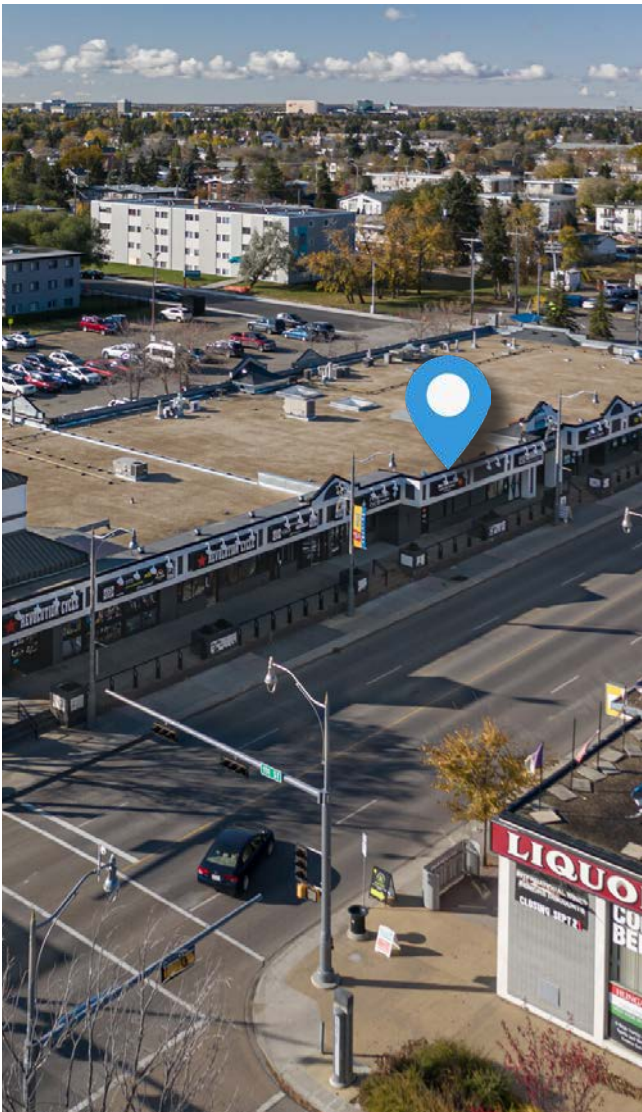


No warranty or representation, expressed or implied, is made as to the accuracy of the information contained herein, and same is submitted subject to errors, omissions, change of price, rental or other conditions, withdrawal without notice, and to any specific listing condition, imposed by our principals.

FOR LEASE

Revolution Square

LIZOTTE
AND ASSOCIATES REAL ESTATE INC



FOR LEASE

Revolution Square

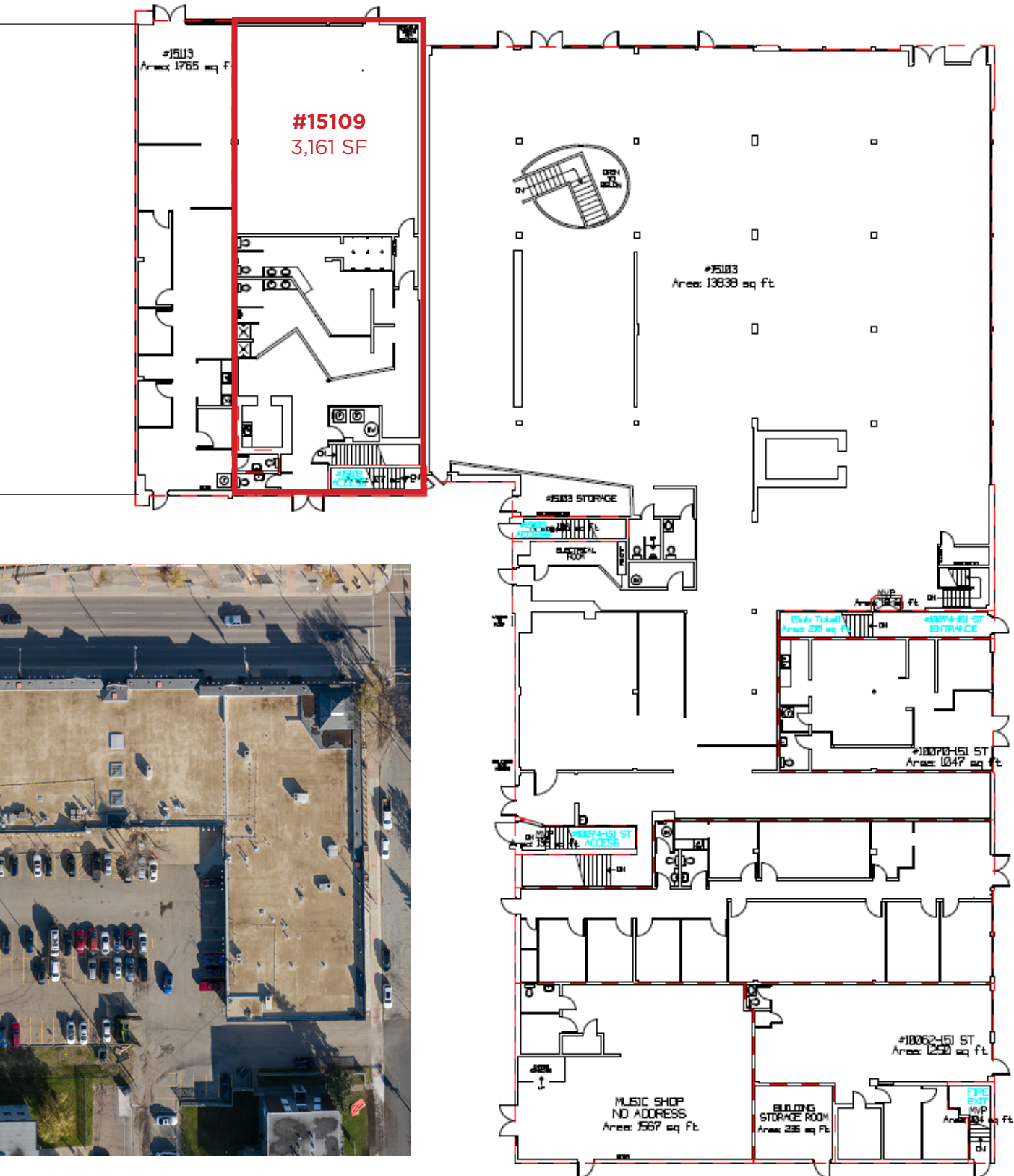
LIZOTTE
AND ASSOCIATES REAL ESTATE INC



Revolution Square

AND ASSOCIATES REAL ESTATE INC

Stony Plain Road



151 Street

FOR LEASE

Revolution Square

LIZOTTE
AND ASSOCIATES REAL ESTATE INC

Property Information

Municipal Address: 15109 Stony Plain Road, Edmonton, AB

Size: 3,161 Sq. Ft. (+/-)

Zoning: CB1 (Low-Intensity Business Zone)

Parking: Ample secure surface parking

Possession: Immediate/negotiable

\$\$\$

Lease Rate: Market

OP Costs: \$9.78/Sq. Ft. (2024)

Contact

David J. Olson
Senior Associate
Cell: 780.908.1650
Direct: 780.784.5356
david@lizotterealestate.com

Justin Sorensen
Associate
Cell: 780.257.6860
Direct: 780.784.9581
justin@lizotterealestate.com

Demographics within 2KM

