

FOR LEASE

3,750 Sq. Ft. (+/-)

LIZOTTE

AND ASSOCIATES REAL ESTATE INC



10575 - 111 Street, Edmonton AB

QUEEN MARY PARK RETAIL/OFFICE SPACE

Property Highlights

- Situated in the trendy neighborhood of Queen Mary Park
- Demisable Leasing options
- Dual-stage sump
- Ample office buildout
- Reception
- Kitchenette
- Zoning allows for a wide variety of uses



780.488.0888



www.lizotterealestate.com



#1200, 10117 Jasper Avenue
Edmonton, AB T5J 1W8



No warranty or representation, expressed or implied, is made as to the accuracy of the information contained herein, and same is submitted subject to errors, omissions, change of price, rental or other conditions, withdrawal without notice, and to any specific listing condition, imposed by our principals.

FOR LEASE

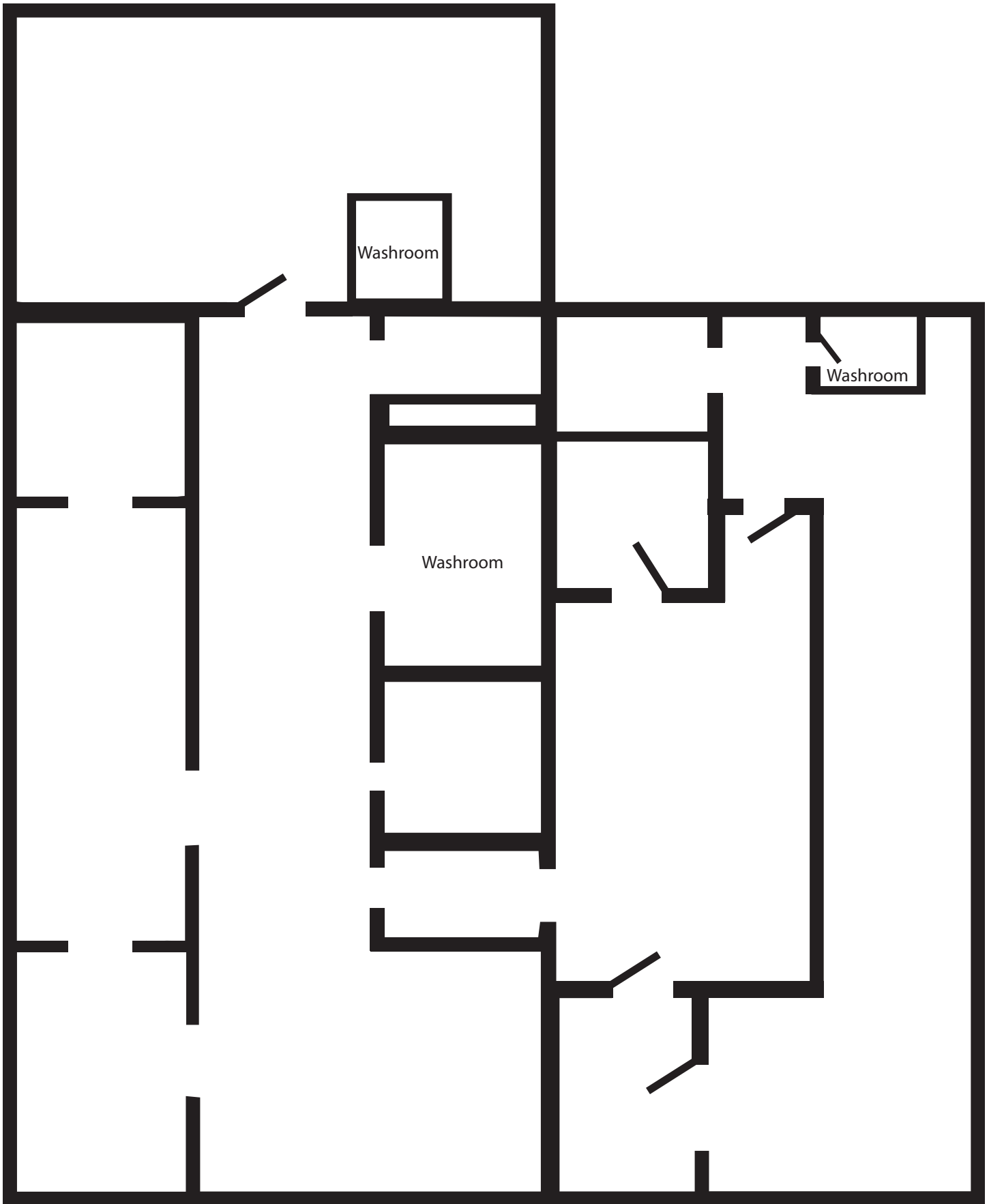
Queen Mary Park Retail/Office Space

LIZOTTE
AND ASSOCIATES REAL ESTATE INC



Floor Plan

*Not to scale.



FOR LEASE

Queen Mary Park Retail/Office Space

LIZOTTE
AND ASSOCIATES REAL ESTATE INC

Property Information

Municipal Address: 10575 - 111 Street, Edmonton, AB

Legal Address: Plan B4; Block 10; Lot 166

Size: Up to 3,750 Sq. Ft. (+/-)

Zoning: Direct Development Control Provision (DC1(18547))

Parking: Dedicated stalls at rear & street

Power: 125/225 Amp, 120/240 Volt

Ceiling Height: 14'

Loading: 10'x12' Grade

Possession: Immediate

\$\$\$

Lease Rate: Market

Op Costs: \$10.57/Sq. Ft. (Includes utilities)

Contact

Richard Lizotte

President/Broker
Cell: 780.292.1871
Direct: 780.784.5360
richard@lizotterealestate.com

Lee Berger

Associate Broker
Cell: 587.983.6654
Direct: 780.784.5363
lee@lizotterealestate.com

Ross Lizotte

Associate Broker
Cell: 780.887.8588
Direct: 780.784.5362
rlizotte@lizotterealestate.com

