

# FOR LEASE

1,395 Sq. Ft. (+/-)

# LIZOTTE

AND ASSOCIATES REAL ESTATE INC



**10009 102 Avenue Edmonton, AB**

## **TURNKEY CAFÉ SPACE IN THE HEART OF DOWNTOWN**

### **Property Highlights**

- Bright space with oversized windows
- The entrance is angled to point toward Churchill Square
- Underground parking available
- Access the street from City Hall, City Centre Mall, AGA, Churchill Square, and the Edmonton Library
- LRT and public transit access



780.488.0888



[www.lizotterealestate.com](http://www.lizotterealestate.com)



#1200, 10117 Jasper Avenue  
Edmonton, AB T5J 1W8

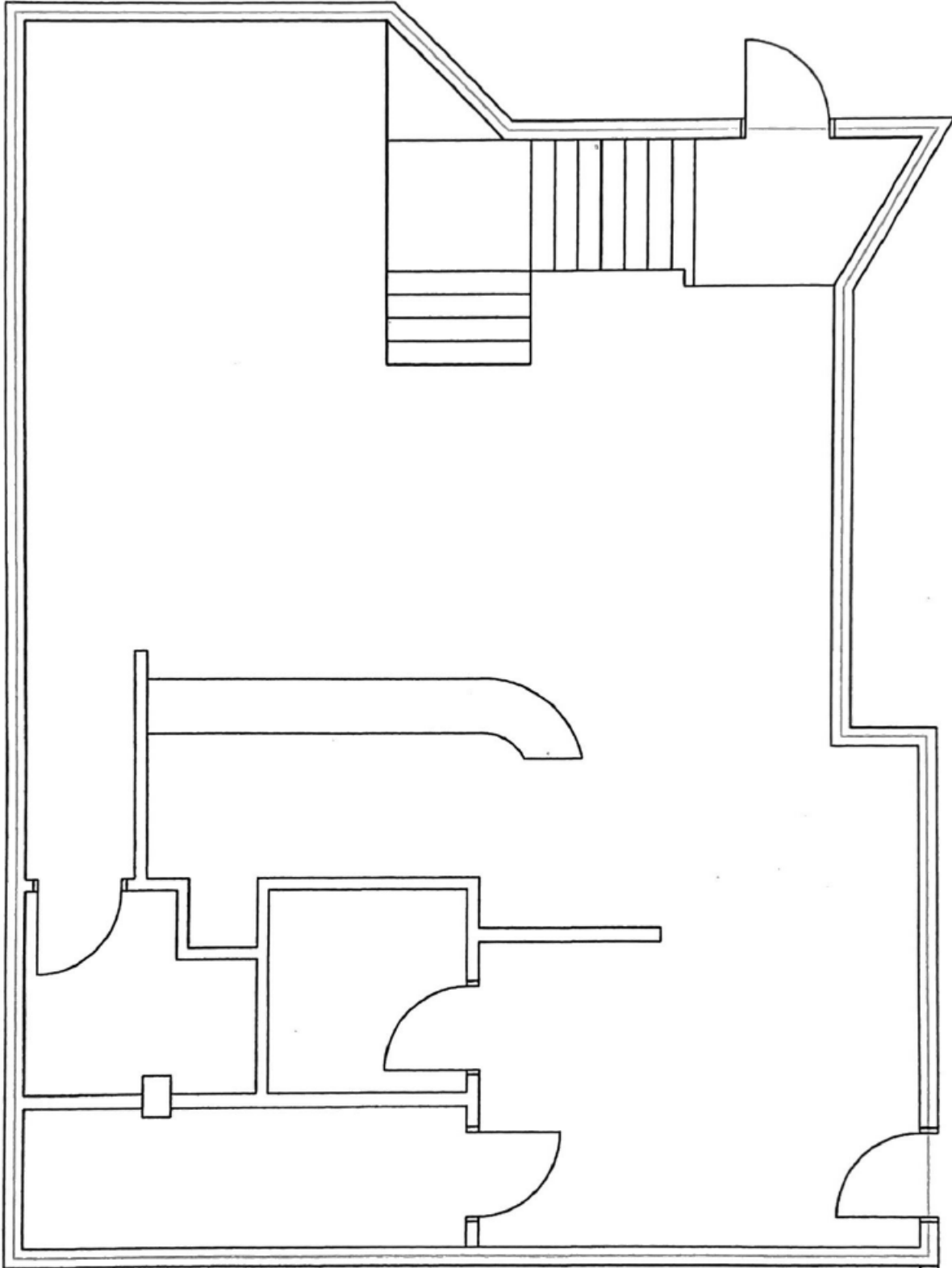


No warranty or representation, expressed or implied, is made as to the accuracy of the information contained herein, and same is submitted subject to errors, omissions, change of price, rental or other conditions, withdrawal without notice, and to any specific listing condition, imposed by our principals.

# FOR LEASE

Turnkey Café Space in the Heart of Downtown

**LIZOTTE**  
AND ASSOCIATES REAL ESTATE INC

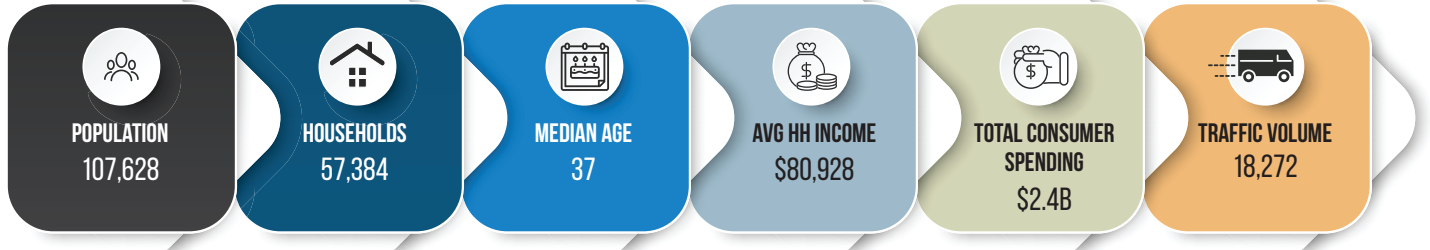


# FOR LEASE

Turnkey Café Space in the Heart of Downtown

**LIZOTTE**  
AND ASSOCIATES REAL ESTATE INC

## Demographics within 3KM



# FOR LEASE

Turnkey Café Space in the Heart of Downtown

**LIZOTTE**  
AND ASSOCIATES REAL ESTATE INC

## Property Information

**Municipal Address:** 10009 102 Ave, Edmonton, AB

**Size:** 1,395 Sq. Ft. (+/-)

**Zoning:** DC1

**Parking:** Underground parking available

**Possession:** Immediate/negotiable

\$\$\$

**Lease Rate:** \$20.00/Sq. Ft. Net

**Op Costs:** \$15.65/Sq. Ft. + Power

## Contact

**Chuck Clubine**

Senior Associate

Cell: 780.264.7773

Direct: 780.784.6553

chuck@lizotterealestate.com

**Tom Dean**

Associate

Cell: 780.920.8019

Direct: 780.784.6550

tom@lizotterealestate.com

