

SUBLEASE

18,820 Sq. Ft (+/-)

LIZOTTE

AND ASSOCIATES REAL ESTATE INC



1101 – 11 Avenue, Nisku, AB

FREE STANDING BUILDING W/ ABUNDANT YARD

Property Highlights

- 9,922 Sq. Ft. (+/-) of well-appointed office over two floors
- Wash bay
- Fenced and gated graveled yard
- Led lighting in warehouse
- Make-up air and ventilation fans



780.488.0888



www.lizotterealestate.com



#1200, 10117 Jasper Avenue
Edmonton, AB T5J 1W8

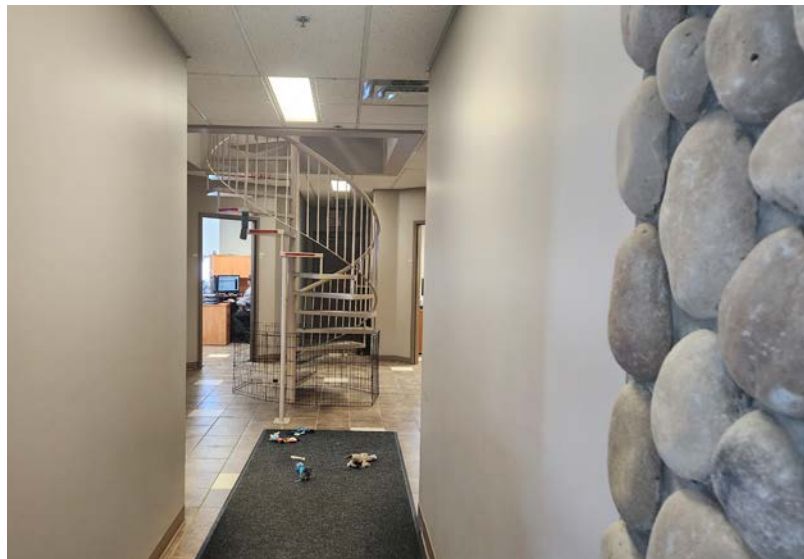
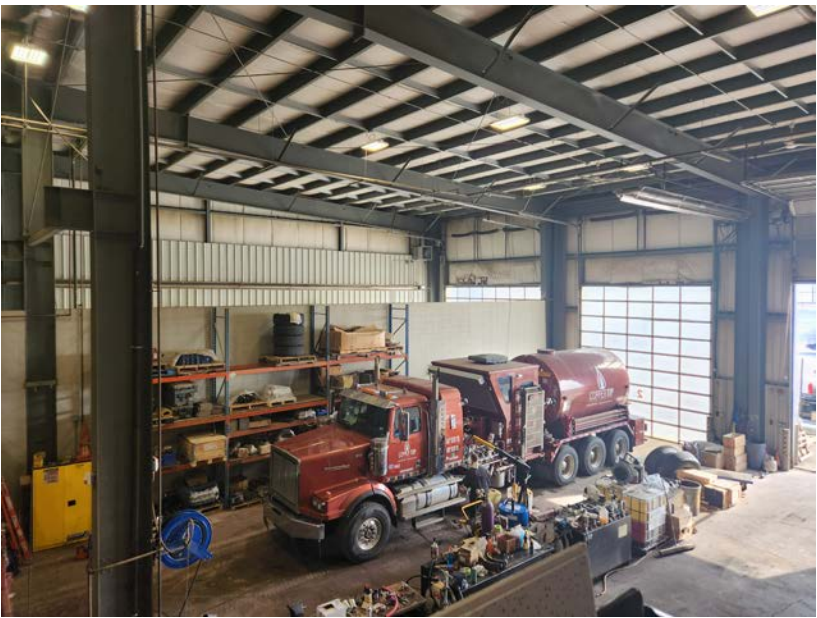


No warranty or representation, expressed or implied, is made as to the accuracy of the information contained herein, and same is submitted subject to errors, omissions, change of price, rental or other conditions, withdrawal without notice, and to any specific listing condition, imposed by our principals.

SUBLEASE

FREE STANDING BUILDING WITH ABUNDANT YARD

LIZOTTE
AND ASSOCIATES REAL ESTATE INC



SUBLEASE

FREE STANDING BUILDING WITH ABUNDANT YARD

LIZOTTE

AND ASSOCIATES REAL ESTATE INC

Property Information

Municipal Address: 1101 - 11 Avenue, Nisku, AB

Legal Address: 4;24;50;18;SW

Size: 18,820 Sq. Ft (+/-)

Site Size: 6.49 Acres (+/-)

Zoning: IND (Industrial)

Parking: Ample surface parking

Power: 800 Amp 277/480 Volt 3 Phase

Heating: Radiant and forced-air Heating

Ceiling Height: 22' Clear

Loading: Three 16'x18' Grade

Possession: Negotiable

\$\$\$

Lease Rate: Market

Op Costs: TBC

Contact

Richard Lizotte

President/Broker

Cell: 780.292.1871

Direct: 780.784.5360

richard@lizotterealestate.com

Lee Berger

Associate Broker

Cell: 587.983.6654

Direct: 780.784.5363

lee@lizotterealestate.com

