

FOR LEASE

1,550 Sq. Ft. (+/-)

LIZOTTE

AND ASSOCIATES REAL ESTATE INC



10347 - 82 Avenue, Edmonton, AB

RESTAURANT ON WHYTE AVENUE

Property Highlights

- Fully fixtured restaurant
- Prime location on the North side of Whyte Avenue
- High exposure to pedestrian and vehicle traffic
- Recently renovated building
- Neighbors include Princess Theater, Commercial Hotel



780.488.0888



www.lizotterealestate.com



#1200, 10117 Jasper Avenue
Edmonton, AB T5J 1W8

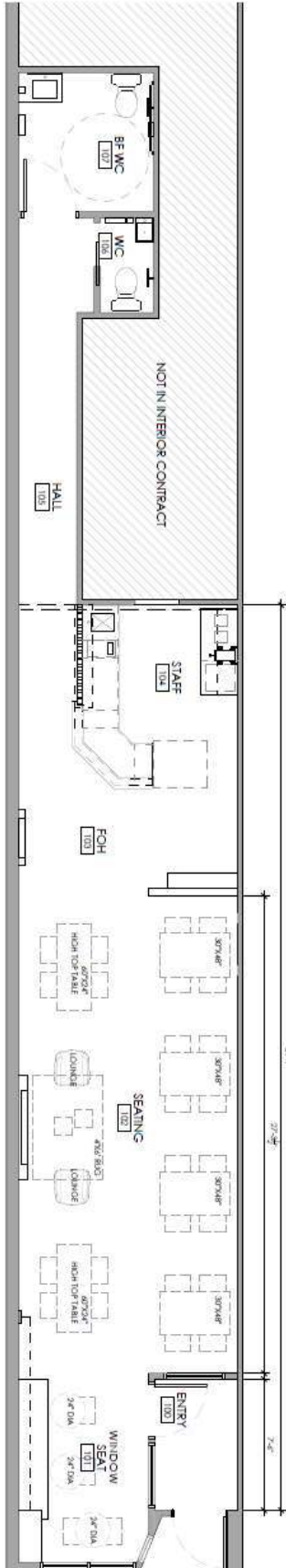


No warranty or representation, expressed or implied, is made as to the accuracy of the information contained herein, and same is submitted subject to errors, omissions, change of price, rental or other conditions, withdrawal without notice, and to any specific listing condition, imposed by our principals.

FOR LEASE

10347 - 82 Avenue, Edmonton, AB

LIZOTTE
AND ASSOCIATES REAL ESTATE INC



FOR LEASE

10347 - 82 Avenue, Edmonton, AB

LIZOTTE

AND ASSOCIATES REAL ESTATE INC

Property Information

Municipal Address: 10347 - 82 Avenue, Edmonton, AB

Legal Address: Lot 11A, Block 61, Plan 5144NY

Size: 1,550 Sq. Ft. (+/-)

Zoning: DC1
(Direct Development Control Provision)

Parking: Street parking

Possession: Immediate

\$\$\$

Lease Rate: Contact Associate

Contact

David J. Olson

Senior Associate

Cell: 780.908.1650

Direct: 780.784.5356

david@lizotttereaestate.com

Justin Sorensen

Associate

Cell: 780.257.6860

Direct: 780.784.9581

justin@lizotttereaestate.com

Soudabeh Mobin

Unlicensed Assistant

Cell: 780.340.9595

Direct: 780.784.9583

soudabeh@lizotttereaestate.com

Demographics within 2KM

