

# FOR LEASE

## 1,388 Sq. Ft. (+/-)

# LIZOTTE

AND ASSOCIATES REAL ESTATE INC



### Unit #2 | 4942 46 Street, Red Deer, AB

## OFFICE SPACE IN LKC BUILDING

### Property Highlights

- Historical Building in Downtown Red Deer
- Great exposure
- 4 large offices, Boardroom, Reception, turn-key space
- Quick access to Taylor Drive and Highway 2A

### Contact

**Richard Lizotte**

President/Broker  
Cell: 780.292.1871  
Direct: 780.784.5360  
richard@lizotterealestate.com

**Lee Berger**

Associate  
Cell: 587.983.6654  
Direct: 780.784.5363  
lee@lizotterealestate.com

**Rohin Geis**

Unlicensed Assistant  
Cell: 587.597.1553  
Direct: 780.784.9586  
rohin@lizotterealestate.com



780.488.0888



www.lizotterealestate.com



#1200, 10117 Jasper Avenue  
Edmonton, AB T5J 1W8

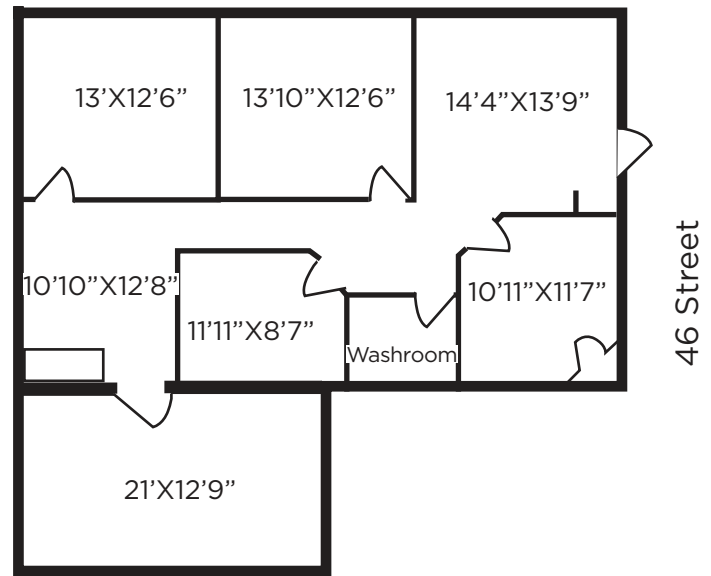
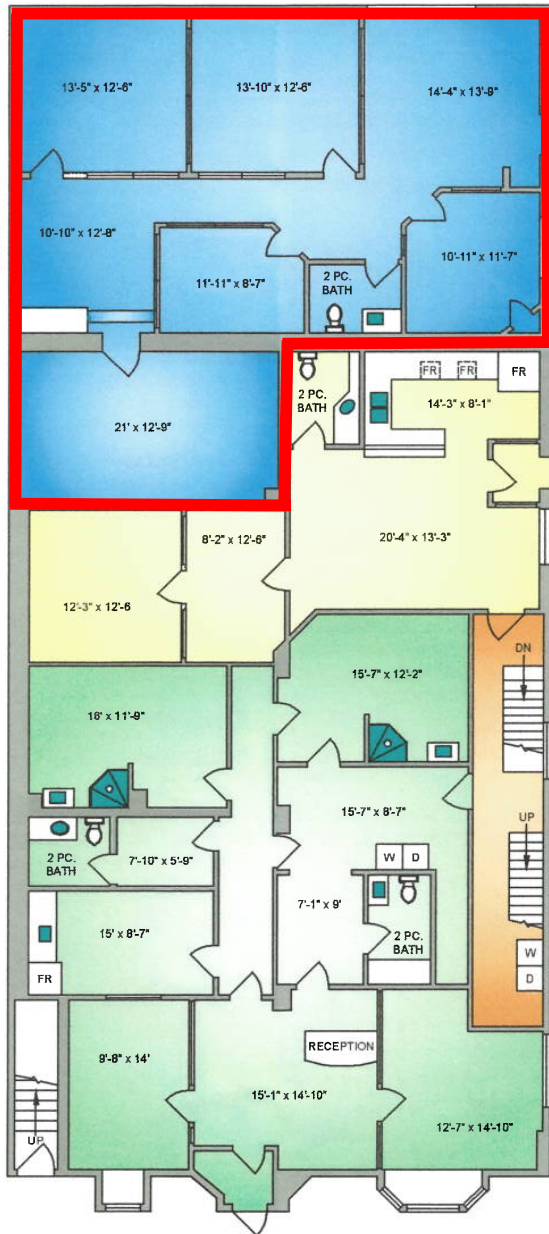


No warranty or representation, expressed or implied, is made as to the accuracy of the information contained herein, and same is submitted subject to errors, omissions, change of price, rental or other conditions, withdrawal without notice, and to any specific listing condition, imposed by our principals.

# FOR LEASE

#2-4942 46th Street, Red Deer

## Floor Plan



780.488.0888



www.lizotterealestate.com



#1200, 10117 Jasper Avenue  
Edmonton, AB T5J 1W8

# FOR LEASE

#2-4942 46th Street, Red Deer

**LIZOTTE**  
AND ASSOCIATES REAL ESTATE INC

## Photos



# FOR LEASE

#2-4942 46th Street, Red Deer

# LIZOTTE

AND ASSOCIATES REAL ESTATE INC

## Property Information

**Municipal Address:** 4942 46 Street, Red Deer, AB

**Size:** 1,388 Sq. Ft. (+/-)

**Zoning:** CB1 (Commercial Business)

**Heating:** Forced Air

**Possession:** Immediate

\$\$\$

**OP Costs:** \$2.22/Sq. Ft. (2021)

**Lease Rate:** Market

## Contact

**Richard Lizotte**

President/Broker

Cell: 780.292.1871

Direct: 780.784.5360

richard@lizotterealestate.com

**Lee Berger**

Associate

Cell: 587.983.6654

Direct: 780.784.5363

lee@lizotterealestate.com

**Rohin Geis**

Unlicensed Assistant

Cell: 587.597.1553

Direct: 780.784.9586

rohin@lizotterealestate.com

