

FOR SUBLEASE

1,115 Sq. Ft. (+/-)

LIZOTTE

AND ASSOCIATES REAL ESTATE INC



10706 Whyte Avenue, Edmonton, AB

WHYTE AVE RETAIL SPACE FOR SUBLEASE

Property Highlights

- High exposure retail space on Whyte Ave
- Blocks from the University of Alberta
- Fully renovated in 2019
- **Two year sublease term available**
- Turnkey bay with storage at the back

Contact

Tom Dean
Associate
Cell: 780.920.8019
Direct: 780.784.6550
tom@lizotterealestate.com

Chuck Clubine
Senior Associate
Cell: 780.264.7773
Direct: 780.784.6553
chuck@lizotterealestate.com



780.488.0888



www.lizotterealestate.com



#1200, 10117 Jasper Avenue
Edmonton, AB T5J 1W8

No warranty or representation, expressed or implied, is made as to the accuracy of the information contained herein, and same is submitted subject to errors, omissions, change of price, rental or other conditions, withdrawal without notice, and to any specific listing condition, imposed by our principals.

FOR SUBLEASE

10706 WHYTE AVENUE

LIZOTTE
AND ASSOCIATES REAL ESTATE INC

Property Information

Municipal Address: 10706 Whyte Avenue, Edmonton, AB

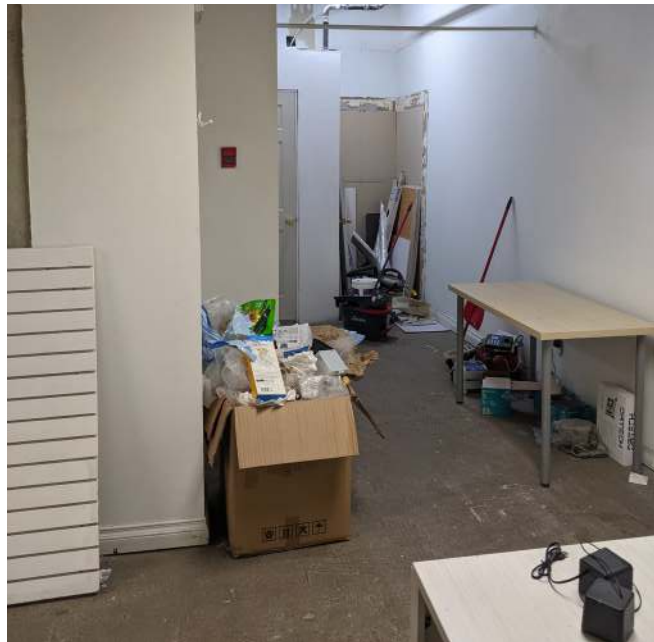
Size: 1,115 Sq.Ft. (+/-)

Gross Rental Rate: Negotiable

Sublease Expires: February 29, 2024

Demographic information

- Traffic: Approximately 28,000 VPD pass the site on Whyte Avenue
- Population: 84,187 (3km)
- Median household income: \$66,877 (3km)
- Projected growth to 2026: 19.59% (3km)



Contact

Tom Dean

Associate

Cell: 780.920.8019

Direct: 780.784.6550

tom@lizotterealestate.com

Chuck Clubine

Senior Associate

Cell: 780.264.7773

Direct: 780.784.6553

chuck@lizotterealestate.com



780.488.0888



www.lizotterealestate.com



#1200, 10117 Jasper Avenue
Edmonton, AB T5J 1W8



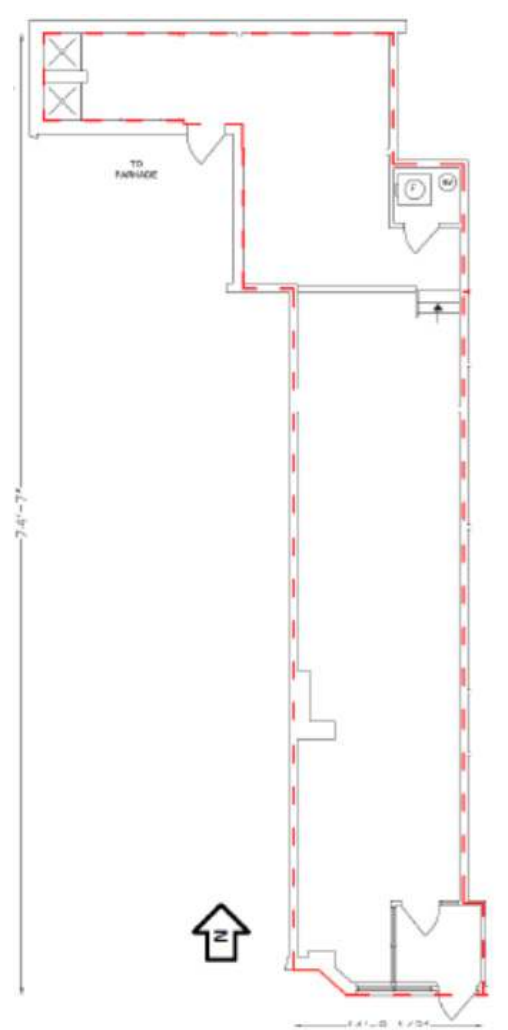
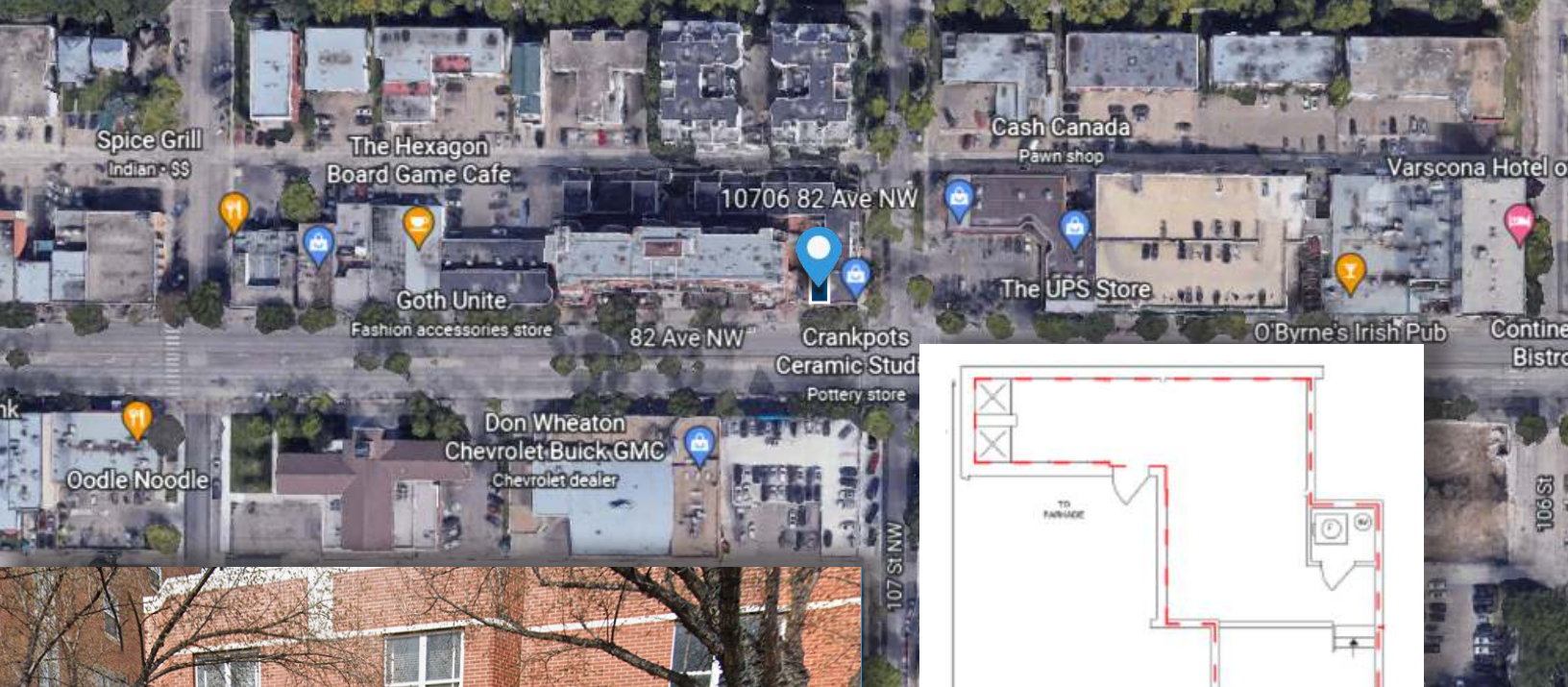
No warranty or representation, expressed or implied, is made as to the accuracy of the information contained herein, and same is submitted subject to errors, omissions, change of price, rental or other conditions, withdrawal without notice, and to any specific listing condition, imposed by our principals.

FOR SUBLEASE

10706 WHYTE AVENUE

LIZOTTE
AND ASSOCIATES REAL ESTATE INC

Mapview and Floor Plan



Contact

Tom Dean
Associate
Cell: 780.920.8019
Direct: 780.784.6550
tom@lizottereal estate.com

Chuck Clubine
Senior Associate
Cell: 780.264.7773
Direct: 780.784.6553
chuck@lizottereal estate.com



780.488.0888



www.lizottereal estate.com



#1200, 10117 Jasper Avenue
Edmonton, AB T5J 1W8

No warranty or representation, expressed or implied, is made as to the accuracy of the information contained herein, and same is submitted subject to errors, omissions, change of price, rental or other conditions, withdrawal without notice, and to any specific listing condition, imposed by our principals.