

FOR LEASE

1,950 Sq. Ft. (+/-)

LIZOTTE

AND ASSOCIATES REAL ESTATE INC



#130 - 849 Premier Way, Sherwood Park, AB

RESTAURANT OPPORTUNITY

Property Highlights

- Ready for fixturing
- Located in commercial strip across from Millennium Place Recreation Centre
- Ideal for ghost kitchen/delivery services
- Ample parking
- Walk in cooler
- Neighboring unit #120 which is also available for lease



780.488.0888



www.lizotterealestate.com



#1200, 10117 Jasper Avenue
Edmonton, AB T5J 1W8



No warranty or representation, expressed or implied, is made as to the accuracy of the information contained herein, and same is submitted subject to errors, omissions, change of price, rental or other conditions, withdrawal without notice, and to any specific listing condition, imposed by our principals.

FOR LEASE

Restaurant Opportunity

LIZOTTE
AND ASSOCIATES REAL ESTATE INC

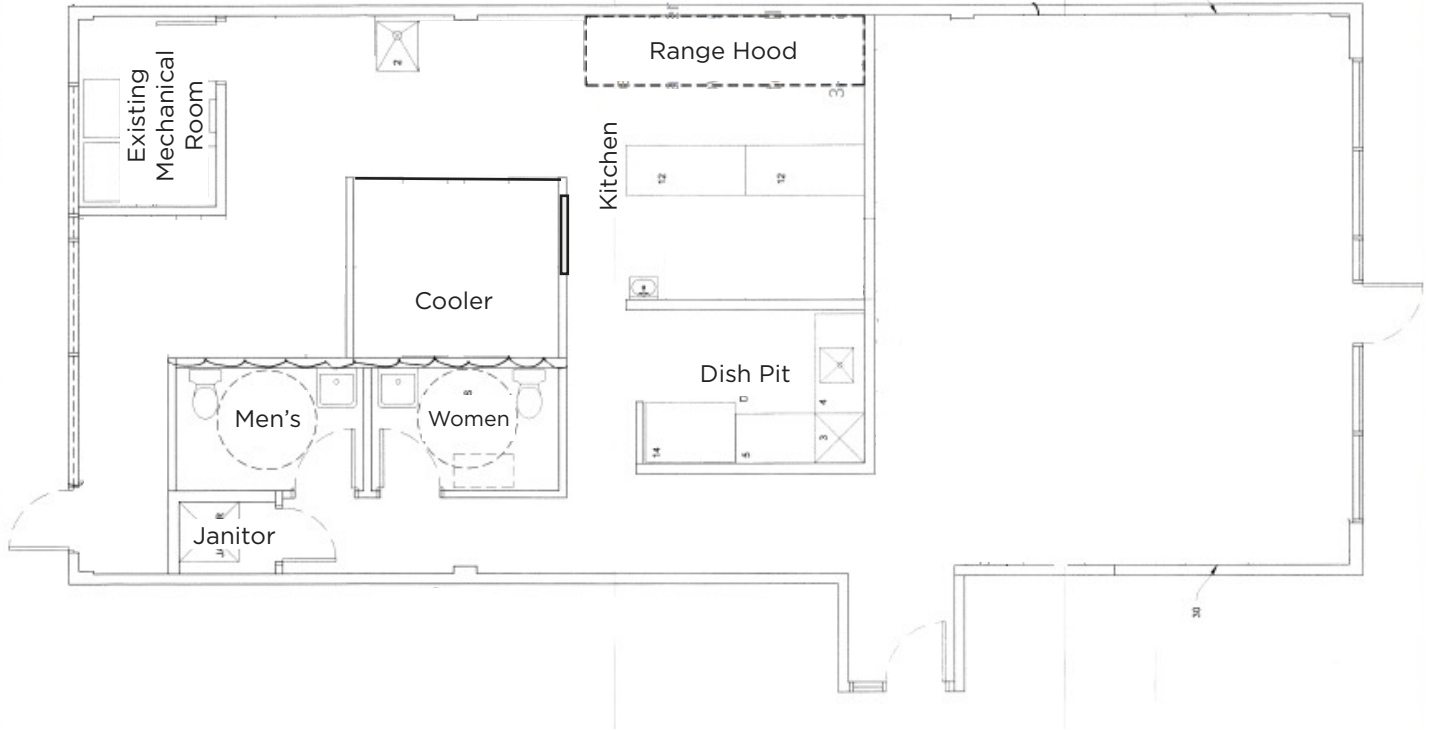


FOR LEASE

Restaurant Opportunity

LIZOTTE
AND ASSOCIATES REAL ESTATE INC

Floor Plan



FOR LEASE

Restaurant Opportunity

LIZOTTE
AND ASSOCIATES REAL ESTATE INC

Property Information

Municipal Address: #130, 849 Premier Way, Sherwood Park, AB

Building Size: 1,950 Sq. Ft. (+/-)

Zoning: C2 (Arterial Commercial)

Power: 400 Amp 120/208V

Parking: Scramble

Ceiling Height: 21' (17' Clear)

Loading: 12'X 14' Grade

Possession: Immediate

\$\$\$

Lease Rate: \$20.00/Sq. Ft.

Op Costs: \$9.50/Sq. Ft.

Contact

Richard Lizotte

President/Broker

Cell: 780.292.1871

Direct: 780.784.5360

richard@lizotterealestate.com

Lee Berger

Associate Broker

Cell: 587.983.6654

Direct: 780.784.5363

lee@lizotterealestate.com

