

# FOR SALE

1,800 Sq. Ft. (+/-)

# LIZOTTE

AND ASSOCIATES REAL ESTATE INC



**Unit 103, 10265 107 Street, Edmonton, AB**

## **BEATTY LOFTS DOWNTOWN CONDO - MIXED-USE**

### **Property Highlights**

- Mixed-use building - flexible zoning
- Other tenants include: Accounting, Photography and Financial Services
- Ideal for office users, media studio, personal services, live/work
- Quick access to downtown - 2 blocks from Rogers Place
- Surface parking - 1 stall included in condo fees



780.488.0888



[www.lizotterealestate.com](http://www.lizotterealestate.com)



#1200, 10117 Jasper Avenue  
Edmonton, AB T5J 1W8

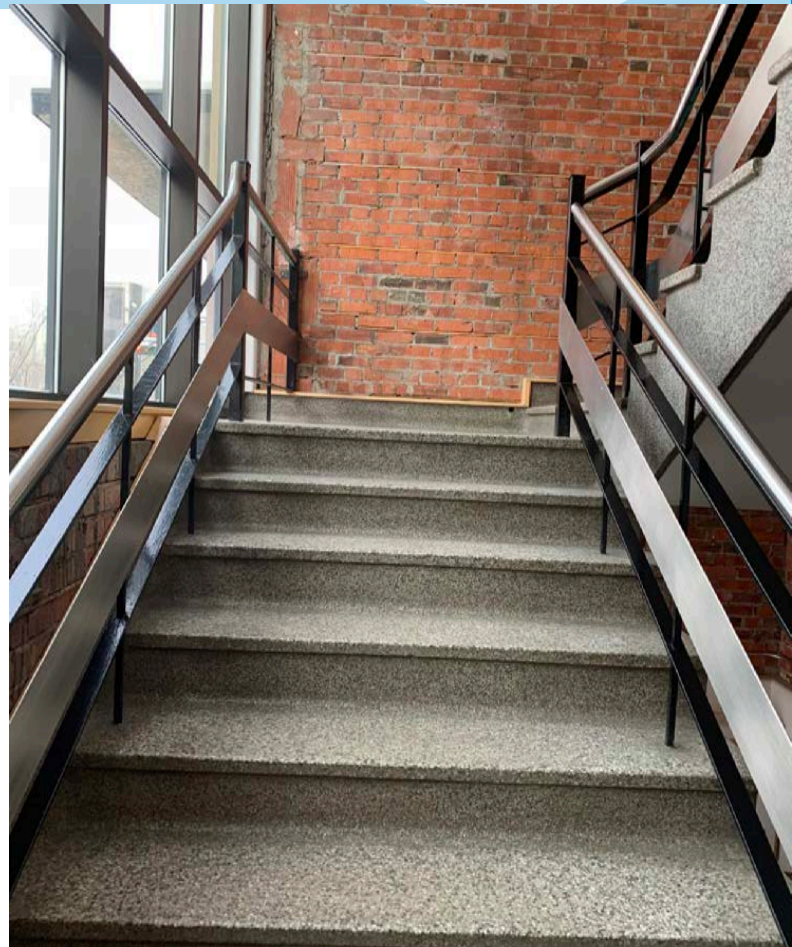


No warranty or representation, expressed or implied, is made as to the accuracy of the information contained herein, and same is submitted subject to errors, omissions, change of price, rental or other conditions, withdrawal without notice, and to any specific listing condition, imposed by our principals.

# FOR SALE

Beatty Lofts Downtown Condo - Mixed-Use

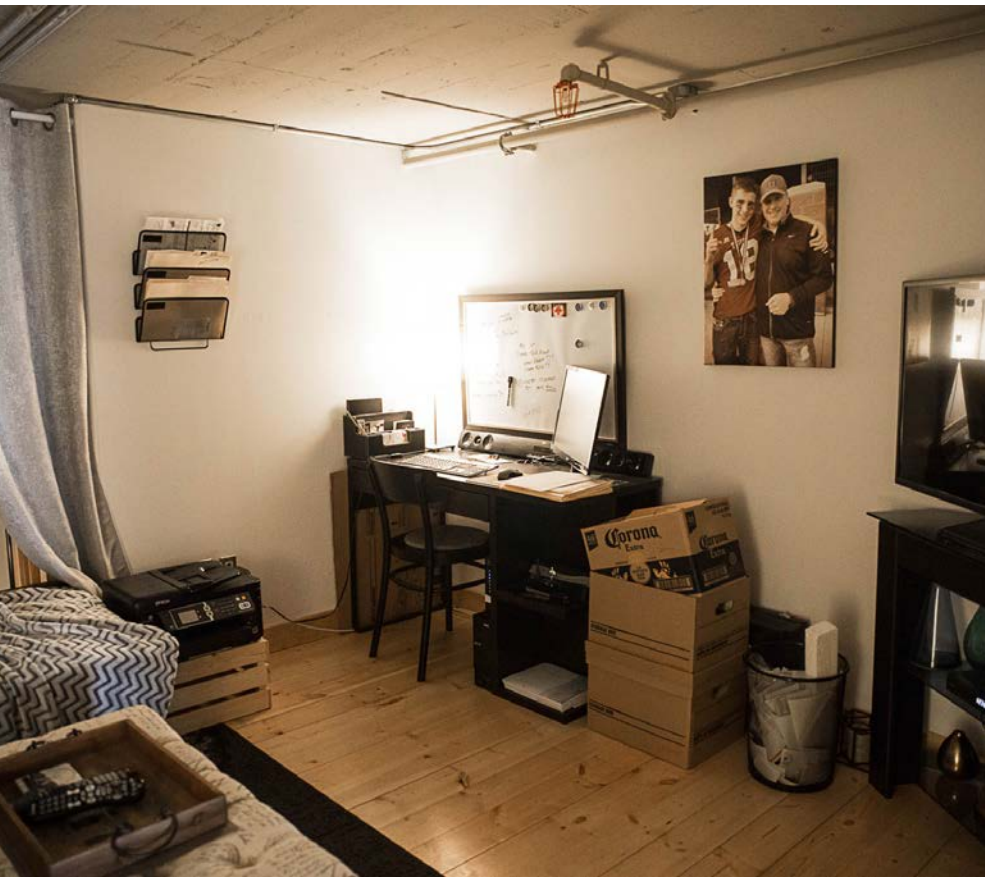
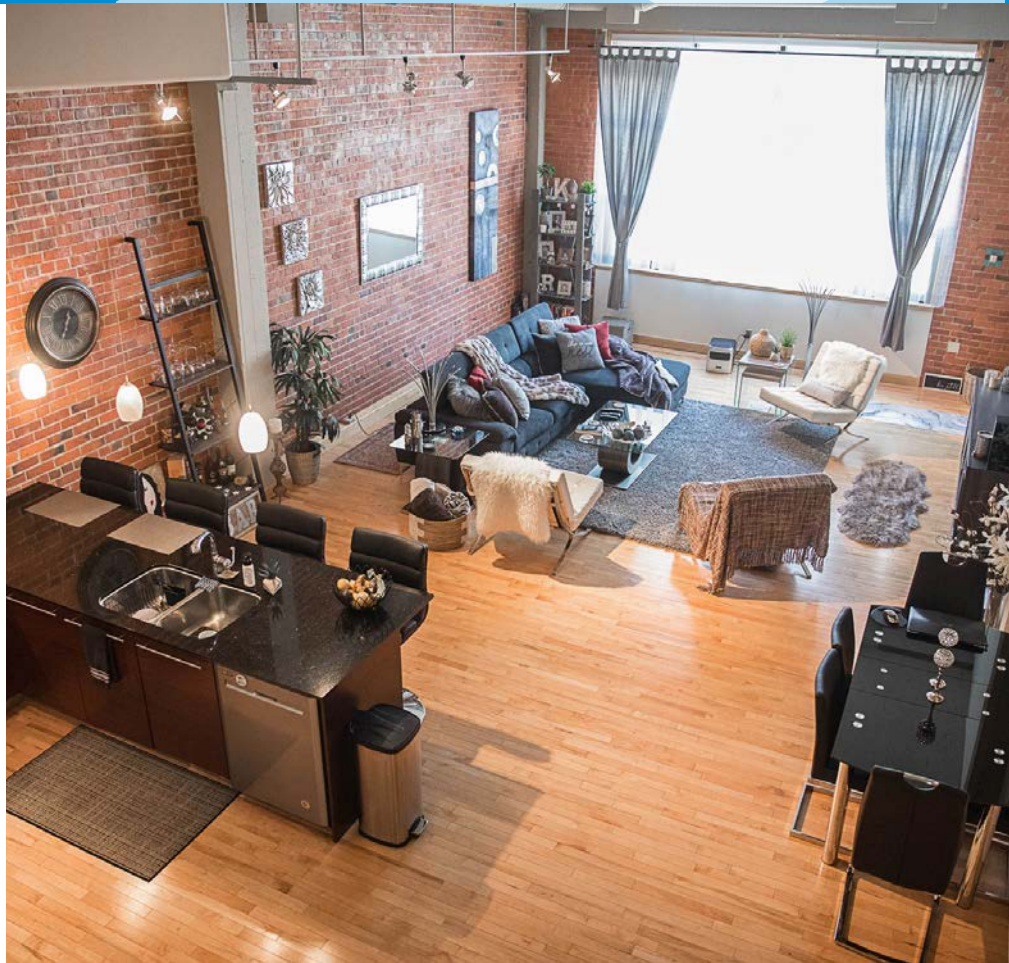
**LIZOTTE**  
AND ASSOCIATES REAL ESTATE INC



# FOR SALE

Beatty Lofts Downtown Condo - Mixed-Use

**LIZOTTE**  
AND ASSOCIATES REAL ESTATE INC



# FOR SALE

Beatty Lofts Downtown Condo - Mixed-Use

# LIZOTTE

AND ASSOCIATES REAL ESTATE INC

## Property Information

**Municipal Address:** Unit 103, 10265 - 107 Street, Edmonton, AB

**Size:** 1,800 Sq. Ft. (+/-)

**Zoning:** UW

**Parking:** Surface Parking (1 Stall)  
Included In Condo Fees

**Possession:** Immediate

\$\$\$

**Purchase Price:** \$475,000.00

**Condo Fee:** \$900.00/Month

**Property Taxes:** \$2.50/Sq. Ft.

## Contact

### Chuck Clubine

Senior Associate  
Cell: 780.264.7773  
Direct: 780.784.6553  
chuck@lizottterestate.com

### Tom Dean

Associate  
Cell: 780.920.8019  
Direct: 780.784.6550  
tom@lizottterestate.com

### Vada Giguere

Unlicensed Assistant  
Direct: 780.784.6556  
vada@lizottterestate.com

