

# FOR LEASE

1,385 Sq. Ft. (+/-)

# LIZOTTE

AND ASSOCIATES REAL ESTATE INC



10109 – 81 Avenue NW, Edmonton, AB

## RETAIL SPACE - PELI BUILDING

### Property Highlights

- Spring availability
- Large windows surrounding the main floor, allowing an abundant amount of natural light
- Located in a fully leased residential building
- The Peli Building has multiple neighboring commercial businesses, residential homes and multi-family developments



780.488.0888



[www.lizotterealestate.com](http://www.lizotterealestate.com)



#1200, 10117 Jasper Avenue  
Edmonton, AB T5J 1W8

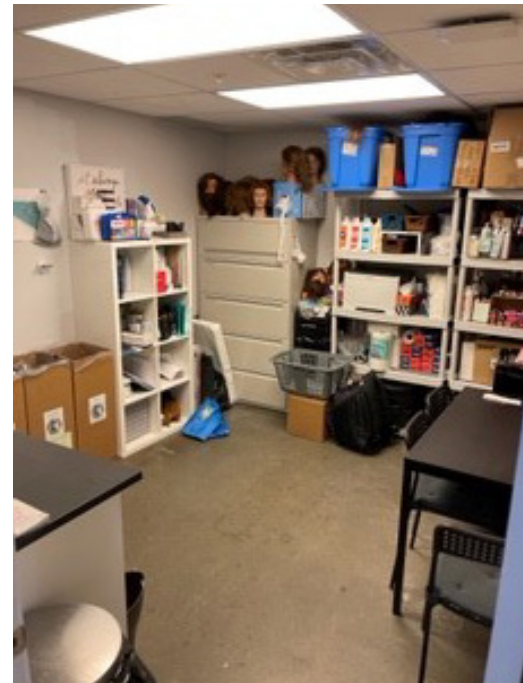
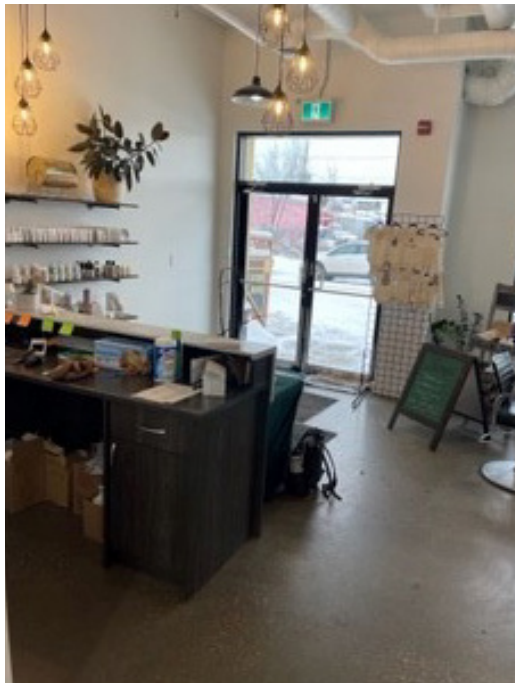
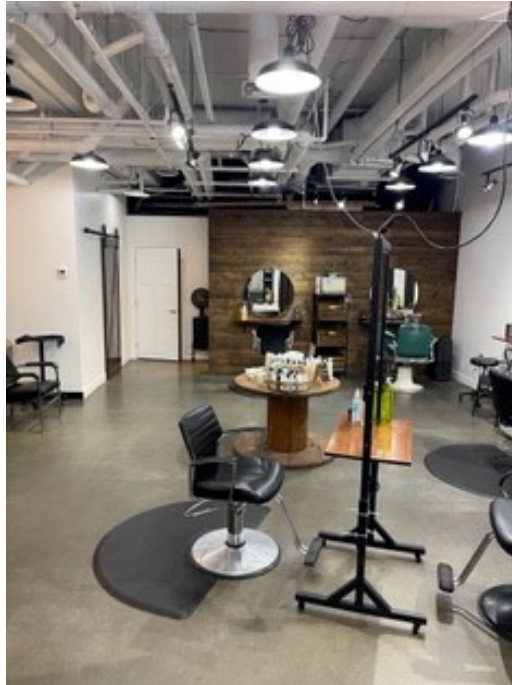


No warranty or representation, expressed or implied, is made as to the accuracy of the information contained herein, and same is submitted subject to errors, omissions, change of price, rental or other conditions, withdrawal without notice, and to any specific listing condition, imposed by our principals.

# FOR LEASE

## Retail Space - Peli Building

**LIZOTTE**  
AND ASSOCIATES REAL ESTATE INC



780.488.0888



[www.lizotterealestate.com](http://www.lizotterealestate.com)



#1200, 10117 Jasper Avenue  
Edmonton, AB T5J 1W8



No warranty or representation, expressed or implied, is made as to the accuracy of the information contained herein, and same is submitted subject to errors, omissions, change of price, rental or other conditions, withdrawal without notice, and to any specific listing condition, imposed by our principals.

# FOR LEASE

## Retail Space - Peli Building

# LIZOTTE

AND ASSOCIATES REAL ESTATE INC

### Property Information

**Municipal Address:** 10109 - 81 Avenue NW, Edmonton, AB

**Legal Address:** Lot 13A, Block 51, Plan 1221272

**Size:** 1,385 Sq.Ft. (+/-)

**Zoning:** DC1 (Direct Development Control)

**Parking:** Ample Surface Parking

**Possession:** Immediate/Negotiable

\$\$\$

**OP Costs:** \$11.00 /Sq. Ft.

**Lease Rate:** \$22.00 /Sq. Ft.

### Contact

**David J. Olson**

Senior Associate

Cell: 780.908.1650

Direct: 780.784.5356

david@lizotterealestate.com

**Justin Sorensen**

Associate

Cell: 780.257.6860

Direct: 780.784.9581

justin@lizotterealestate.com

**Soudabeh Mobin**

Unlicensed Assistant

Cell: 780.340.9595

Direct: 780.784.9583

soudabeh@lizotterealestate.com

### Demographics within 2KM

