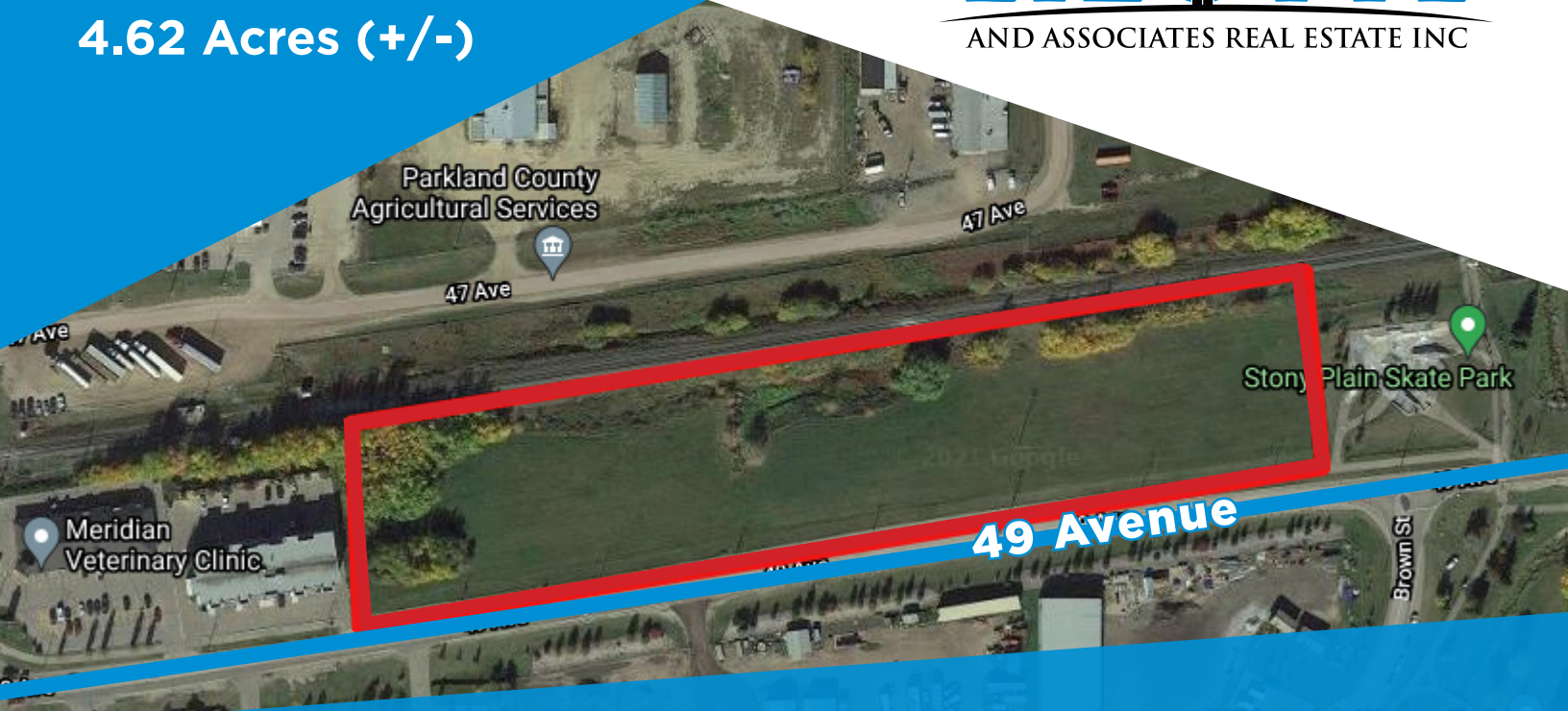


# FOR SALE

4.62 Acres (+/-)

# LIZOTTE

AND ASSOCIATES REAL ESTATE INC



Plan 0421441, Lot 6, Block 1 - Stony Plain, AB

## STONY PLAIN LAND

### Property Highlights

- Excellent opportunity to build a mixed use property
- Amazing high traffic location, surrounded by neighboring businesses, and residential density
- Serviced land
- **Permitted uses:** Educational Services, Automotive services, Retail stores, Pet grooming services, Personal services, Residential sales center

### Property Details

**Address:** 49 Avenue, West of 48 Street, Stony Plain, AB

**Legal Description:** Plan 0421441, Lot 6, Block 1

**Lot Size:** 4.62 Acres (+/-)

**Zoning:** C2 (Commercial General Zoning)

**Sale Price:** Market

### Contact Associate for Details

**David J. Olson**  
Senior Associate  
Cell: 780.908.1650  
Direct: 780.784.5356  
david@lizotterealestate.com

**Justin Sorensen**  
Associate  
Cell: 780.257.6860  
Direct: 780.784.9581  
justin@lizotterealestate.com



780.488.0888



www.lizotterealestate.com



#1200, 10117 Jasper Avenue  
Edmonton, AB T5J 1W8



No warranty or representation, expressed or implied, is made as to the accuracy of the information contained herein, and same is submitted subject to errors, omissions, change of price, rental or other conditions, withdrawal without notice, and to any specific listing condition, imposed by our principals.