

FOR LEASE

LIZOTTE
AND ASSOCIATES REAL ESTATE INC



High Profile Retail Bay

16534 - 59A Street, Edmonton, AB

1,400 Sq.Ft. (+/-)

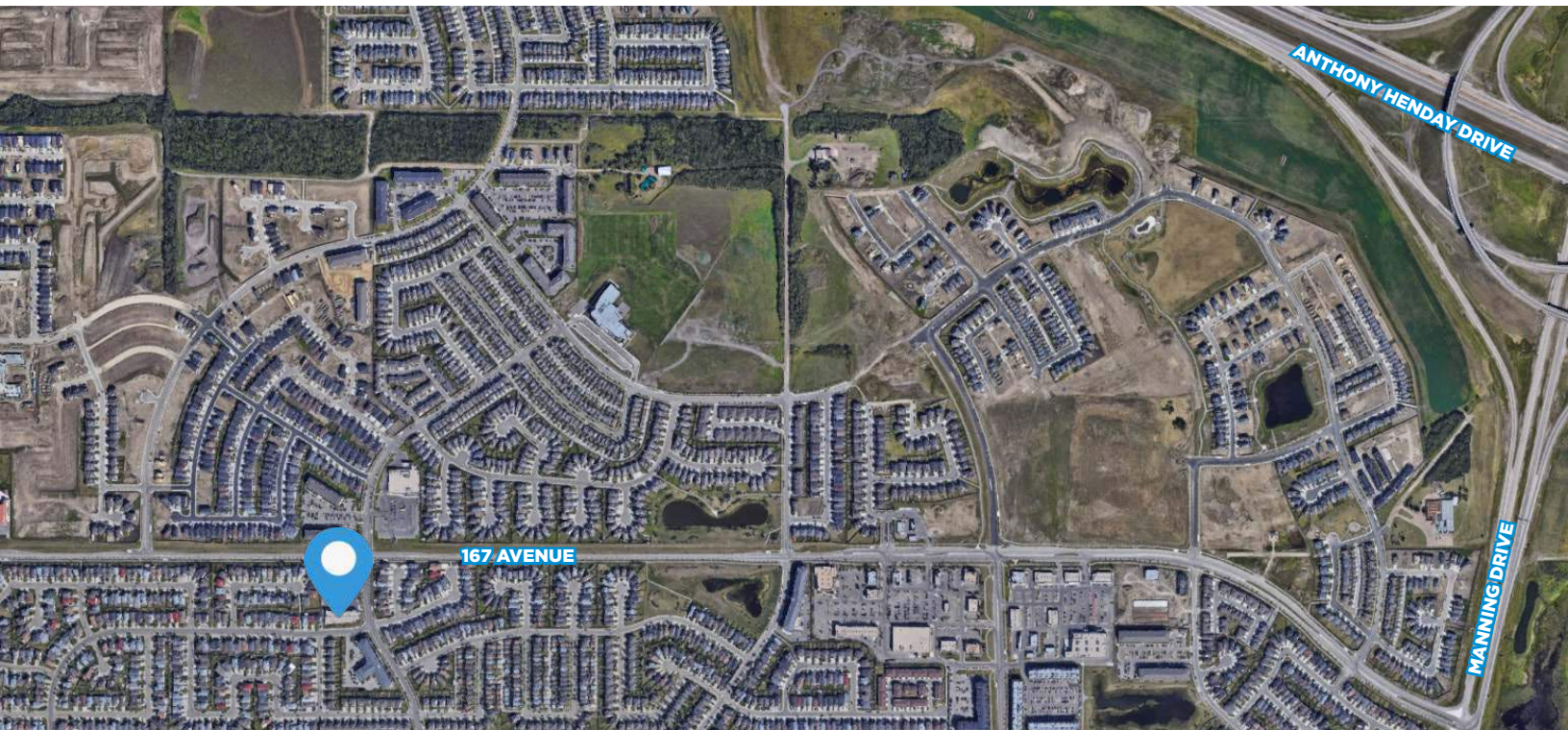
Property Highlights

- Situated in a high density urban neighborhood
- Close proximity to 167 Ave, Manning Drive and Anthony Henday
- Current tenant mix: Macs, Daycare, Liquor Store, Domino's Pizza
- Excellent signage, Pylon signage opportunity
- Prime uses: Massage Therapy, Chiropractic, Financial Services, Delivery/Courier, Specialty Retail

Lizotte and Associates Real Estate Inc.
#1200, 10117 Jasper Avenue
Edmonton, AB T5J 1W8
780.488.0888 | www.lizotterealestate.com

Property Details

Address:	16534 - 59A Street, Edmonton, AB
Size:	1,400 Sq.Ft. (+/-)
Zoning:	CB1 (Low Intensity Business Zone)
Parking:	Ample Surface Parking
Possession:	Immediate
Op. Costs:	\$11.83/Sq.Ft. (includes property tax, snow removal, common area maintenance)
Lease Rate:	\$35.00/Sq.Ft.



Contact

David J. Olson
Senior Associate
Retail Leasing & Investment
Cell: 780.908.1650
Direct: 780.784.5356
david@lizotterealestate.com

Justin Sorensen
Associate
Cell: 780.257.6860
Direct: 780.784.9581
justin@lizotterealestate.com

Sanja Bojanic
Licensed Associate
Cell: 780.394.1395
Direct: 780.784.0444
sanja@lizotterealestate.com

Sabrina Gregor
Unlicensed Assistant
Cell: 587.335.6620
Direct: 780.784.5357
sabrina@lizotterealestate.com

Lizotte and Associates Real Estate Inc. #1200, 10117 Jasper Avenue, Edmonton, AB T5J 1W8 780.488.0888 | www.lizotterealestate.com