

FOR LEASE

LIZOTTE
AND ASSOCIATES REAL ESTATE INC



Turn-Key Yoga Space

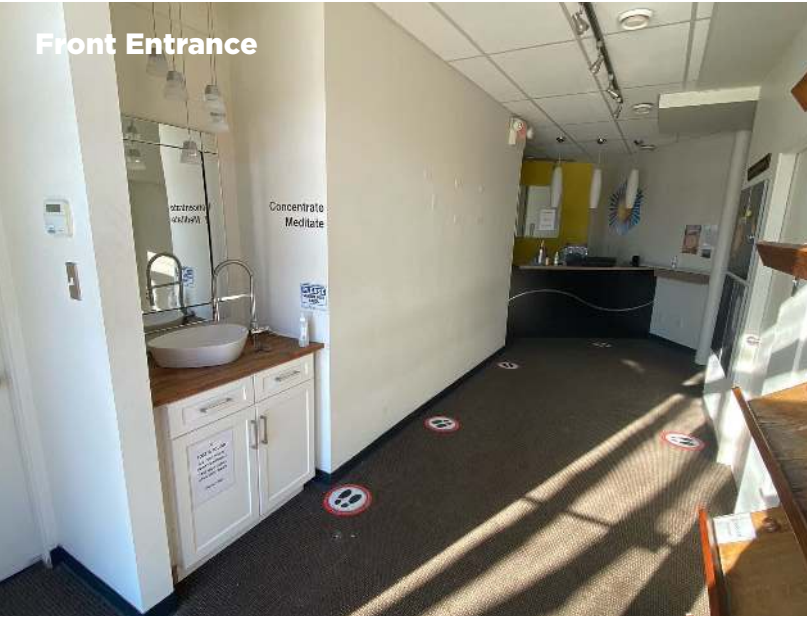
15109 Stony Plain Road, Edmonton, AB
3,161 Sq.Ft. (+/-)

Property Highlights

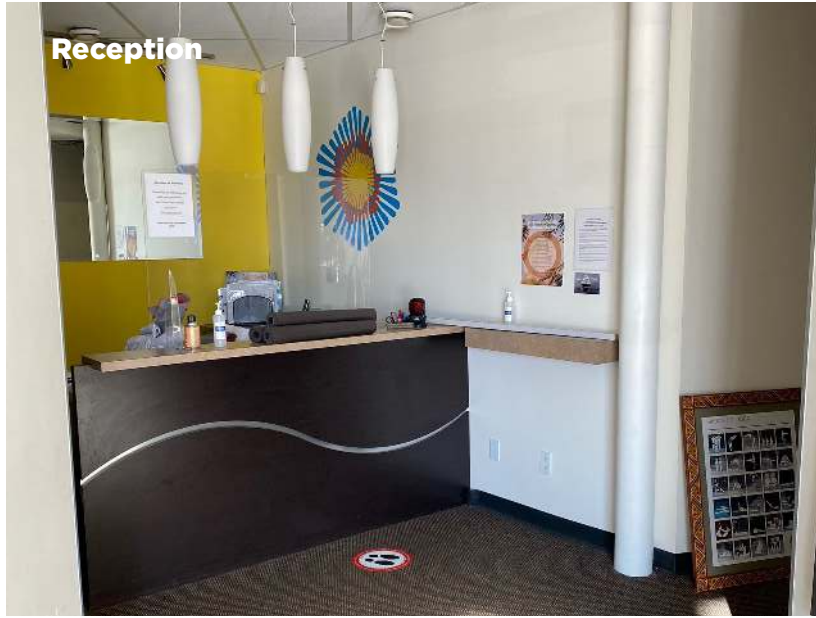
- Turn-Key Space
- Fully Built in Washrooms, Reception Area, and Change Rooms
- Parking On Site
- Great Exposure To Stony Plain Road
- Easy Access to 149 Street
- Neighbouring Tenants Are Shoppers Drug Mart, Walsh's No Frills, Revolution Cycle, Doggy Style Deli, Anker Tattoo, Neo Cafe & Juicery, Wolfhouse MMA Gym, TD Bank, London Drugs and others

Lizotte and Associates Real Estate Inc.
#1200, 10117 Jasper Avenue
Edmonton, AB T5J 1W8
780.488.0888 | www.lizotterealestate.com

Front Entrance



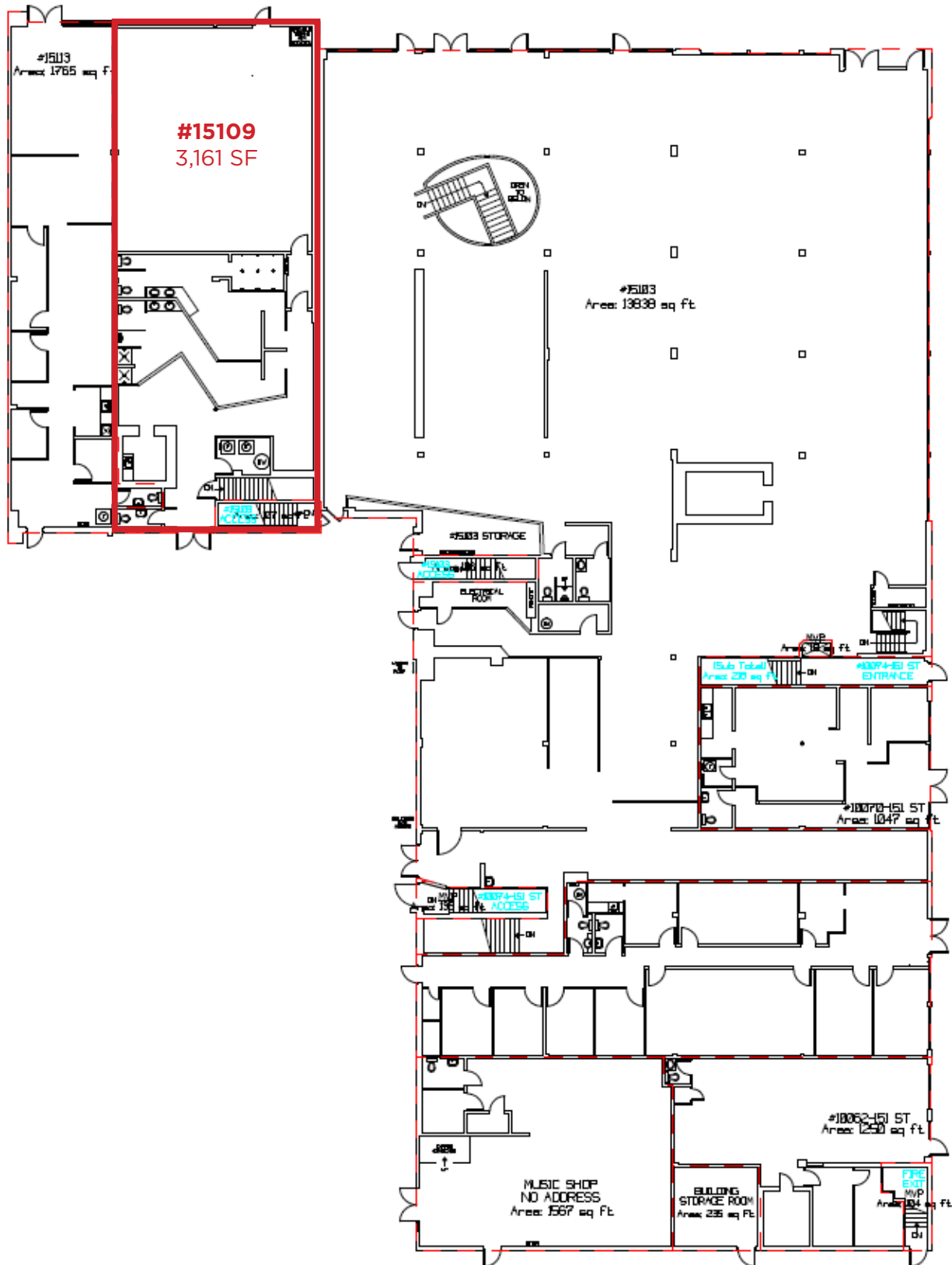
Reception



Studio

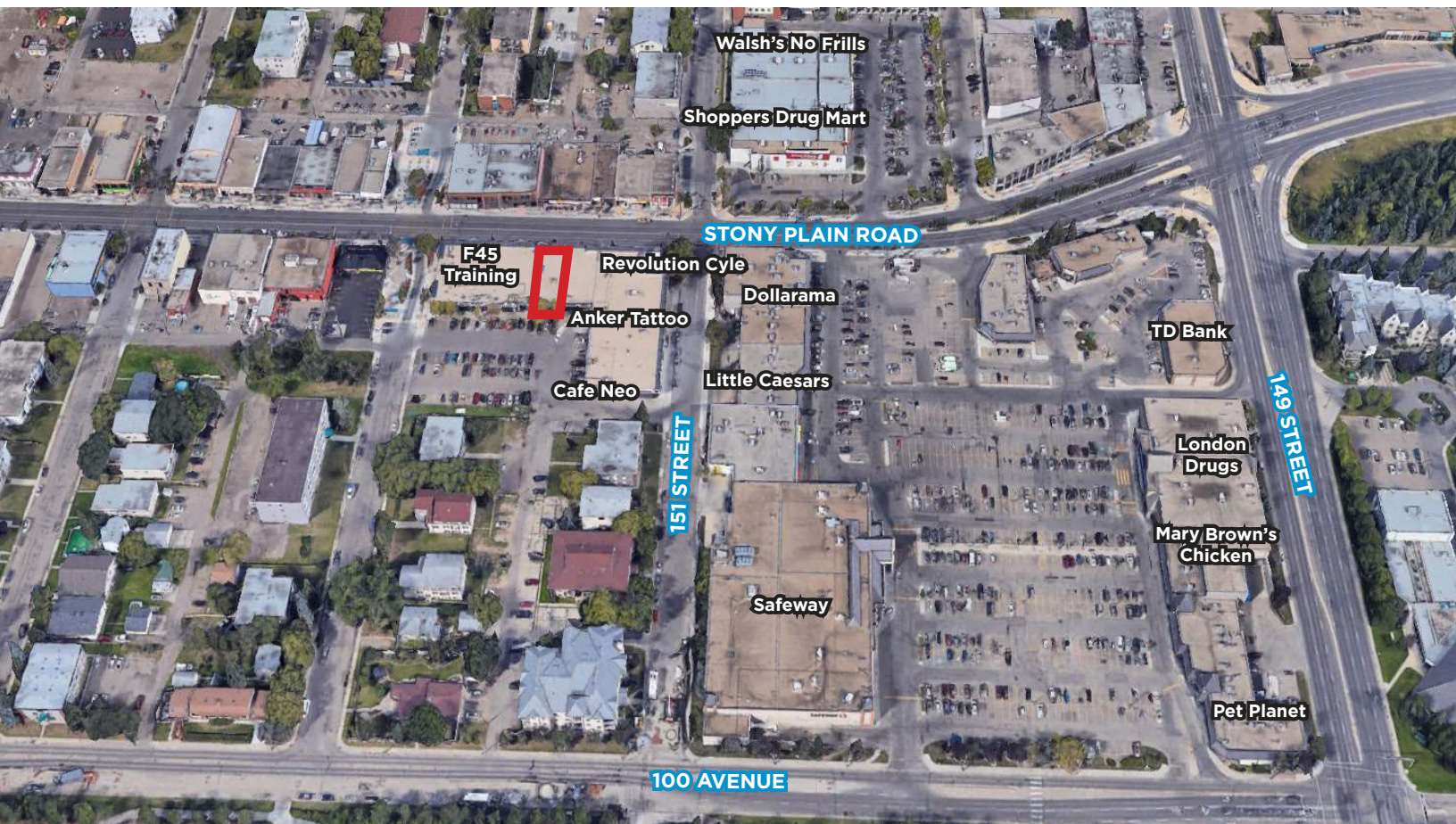


Stony Plain Road



Property Details

Municipal Address:	15109 Stony Plain Road, Edmonton, AB
Legal Description:	Plan 5756KS; Block 42; Lots 2U/19U/20/21U/22
Size:	3,161 Sq.Ft. (+/-)
Parking:	Surface
Zoning:	CB1
Lease Rate:	Please Contact Associate
Op. Costs:	\$7.63/Sq.Ft. (2020)



Contact

David J. Olson
Senior Associate
Retail Leasing & Investment
Cell: 780.908.1650
Direct: 780.784.5356
david@lizotterealestate.com

Justin Sorensen
Associate
Cell: 780.257.6860
Direct: 780.784.9581
justin@lizotterealestate.com

Sabrina Gregor
Unlicensed Assistant
Cell: 587.335.6620
Direct: 780.784.5357
sabrina@lizotterealestate.com

Lizotte and Associates Real Estate Inc.
#1200, 10117 Jasper Avenue
Edmonton, AB T5J 1W8
780.488.0888 | www.lizotterealestate.com