

FOR LEASE

4,424 Sq. Ft. (+/-)

LIZOTTE

AND ASSOCIATES REAL ESTATE INC

MOTIVATED LANDLORD



**\$1.00 PSF/YEAR FEE
FOR OUTSIDE BROKERS**

\$10.00/SQ.FT. NET

9636 - 51 Avenue, Edmonton, AB

OMNI CENTRE OFFICE SPACE

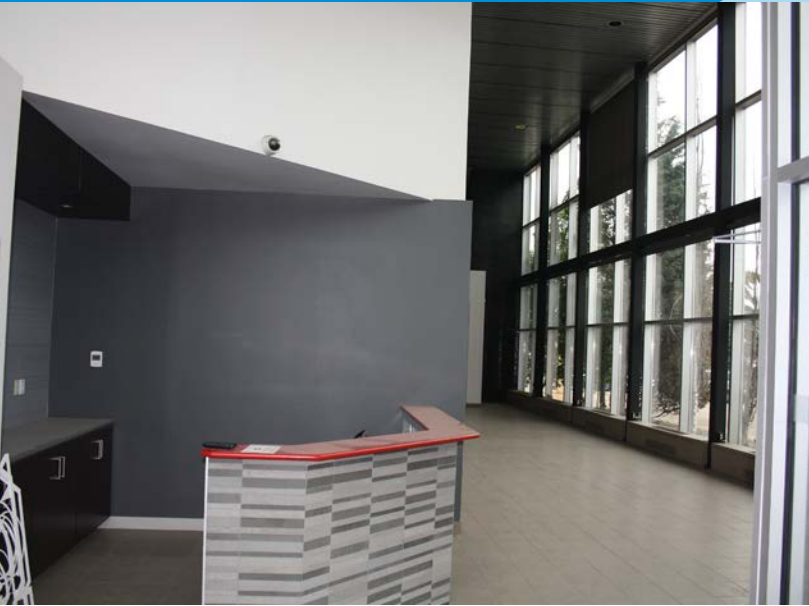
Property Highlights

- Attractive atrium style lobby
- High exposure south side location
- Fully built out corporate office space
- Ample dedicated on-site parking
- Free rent incentives for qualified tenants
- Exterior building signage available
- Great Southside location and close to major arterials including Whitemud, Gateway Boulevard/Calgary Trail, Anthony Henday, and Sherwood Park Freeway

FOR LEASE

OMNI Centre Office

LIZOTTE
AND ASSOCIATES REAL ESTATE INC



FOR LEASE

OMNI Centre Office

LIZOTTE
AND ASSOCIATES REAL ESTATE INC



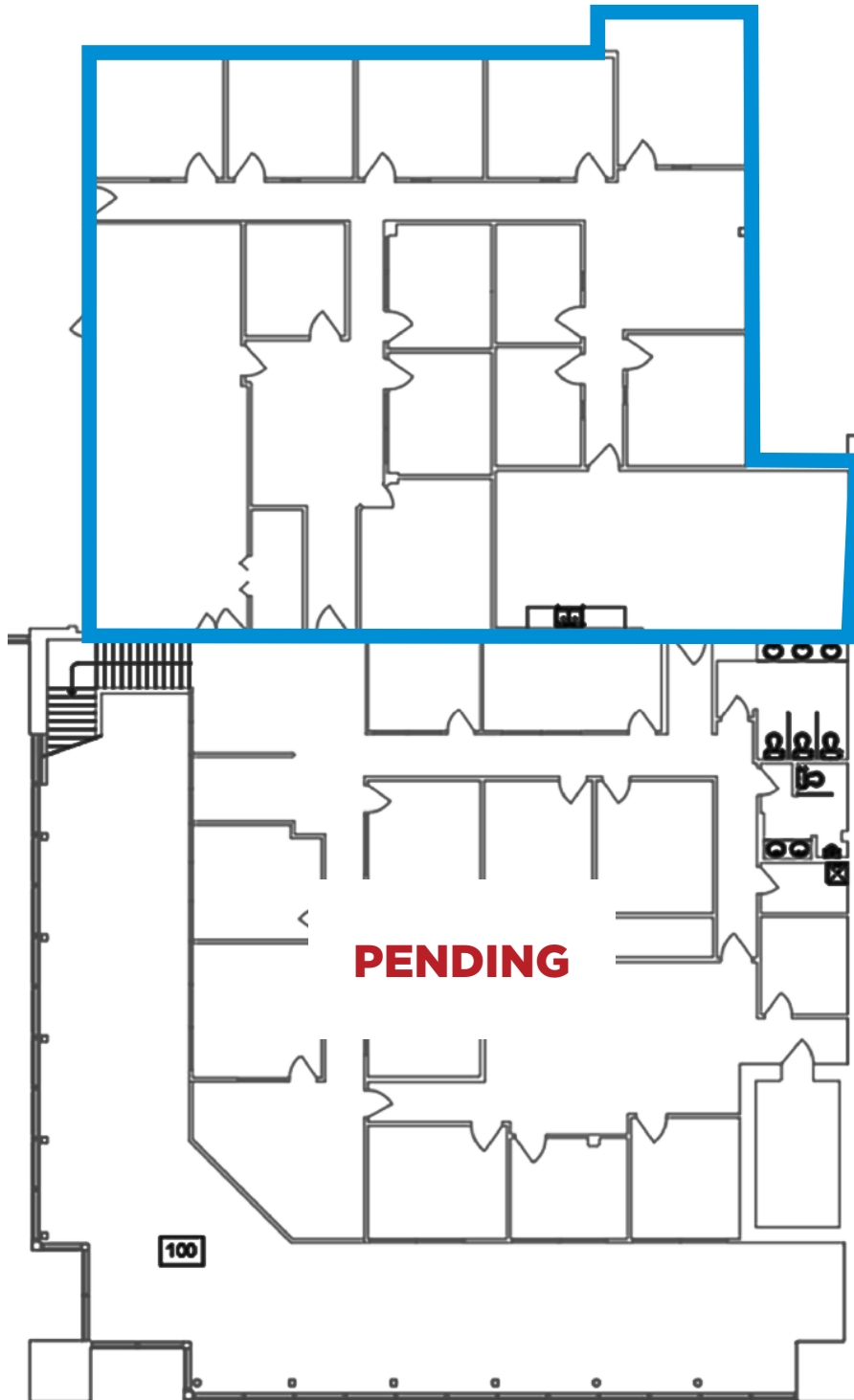
FOR LEASE

OMNI Centre Office

LIZOTTE
AND ASSOCIATES REAL ESTATE INC

Unit 3

Second Floor 4,424 SF (+/-)



FOR LEASE

OMNI Centre Office

LIZOTTE
AND ASSOCIATES REAL ESTATE INC

Property Information

Municipal Address: 9636 - 51 Avenue, Edmonton, AB

Legal Address: Lot 7, Block 19, Plan 7723025

Size: **Unit 3 Second Floor** 4,424 Sq. Ft. (+/-)

Parking: Ample surface parking available

Possession: Immediate

\$\$\$

Lease Rate: \$10.00/Sq. Ft. (NNN)

Op Costs: \$13.15 (Est. 2024)

Contact

Chuck Clubine

Senior Associate
Cell: 780.264.7773
Direct: 780.784.6553
chuck@lizotterealestate.com

Tom Dean

Associate
Cell: 780.920.8019
Direct: 780.784.6550
tom@lizotterealestate.com

