

FOR LEASE

LIZOTTE
AND ASSOCIATES REAL ESTATE INC



Rare Small Lot For Lease

12015 - 121A Street, Edmonton, AB

7,500 Sq.Ft.

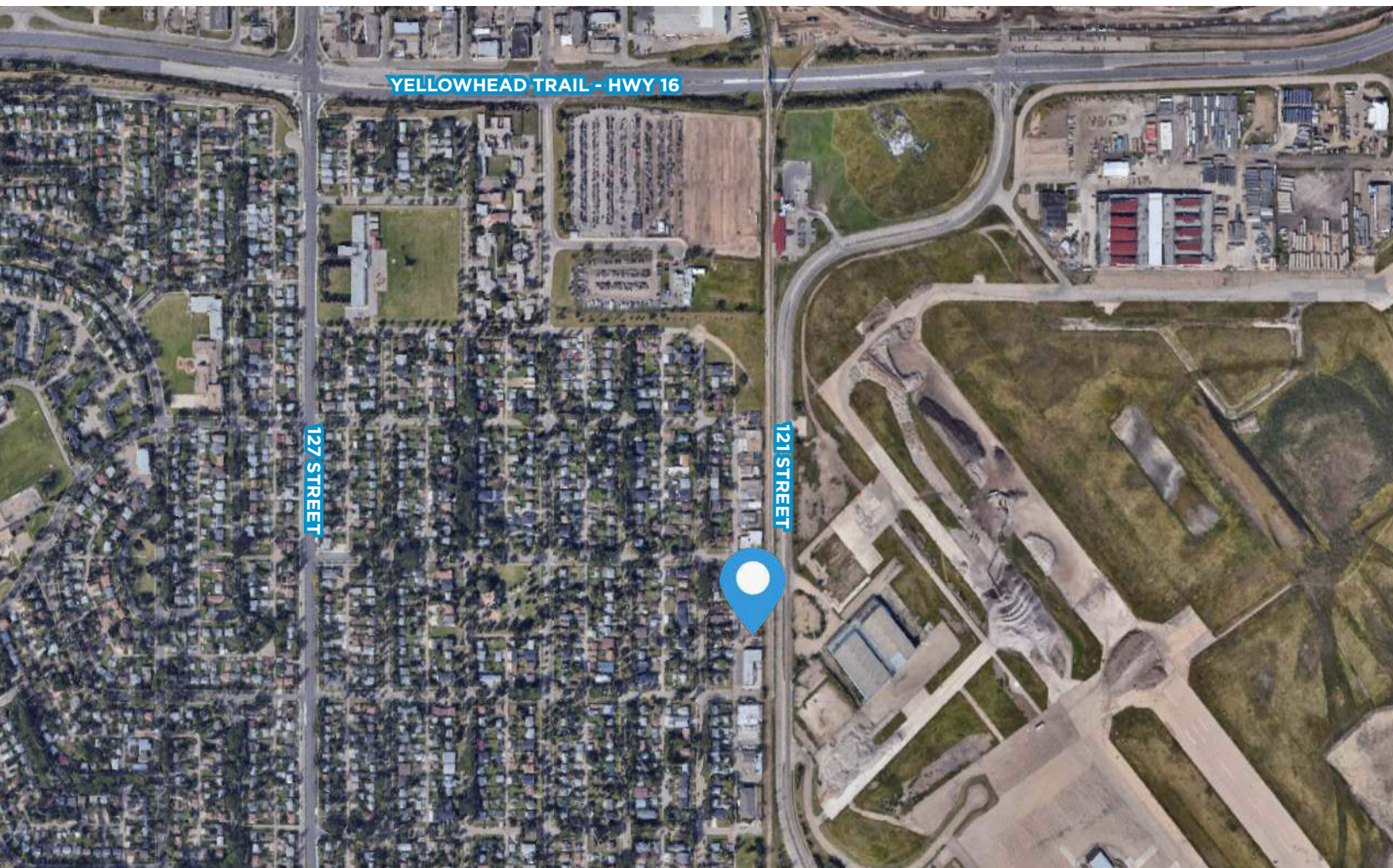
Property Highlights

- Fully Fenced Secured Lot
- Site Graded And Graveled For Trailer Or Heavy Equipment Storage
- Located Right Off Of 121 Street With Great Access To Yellowhead Trail

Lizotte and Associates Real Estate Inc.
#1200, 10117 Jasper Avenue
Edmonton, AB T5J 1W8
780.488.0888 | www.lizotterealestate.com

Property Details

Municipal Address:	12015 - 121A Street, Edmonton, AB
Legal Description:	Lot 4, Block 13, Plan RN64
Size:	7,500 Sq.Ft. (+/-)
Zoning:	Medium Industrial (IM)
Possession:	Immediate/Short Term Rentals Available
Lease Rate:	\$1,100/month



Contact

David J. Olson
Senior Associate
Retail Leasing & Investment
Cell: 780.908.1650
Direct: 780.784.5356
david@lizotterealestate.com

Justin Sorensen
Associate
Cell: 780.257.6860
Direct: 780.784.9581
justin@lizotterealestate.com

Sabrina Gregor
Unlicensed Assistant
Cell: 587.335.6620
Direct: 780.784.5357
sabrina@lizotterealestate.com

Lizotte and Associates Real Estate Inc.
#1200, 10117 Jasper Avenue
Edmonton, AB T5J 1W8
780.488.0888 | www.lizotterealestate.com