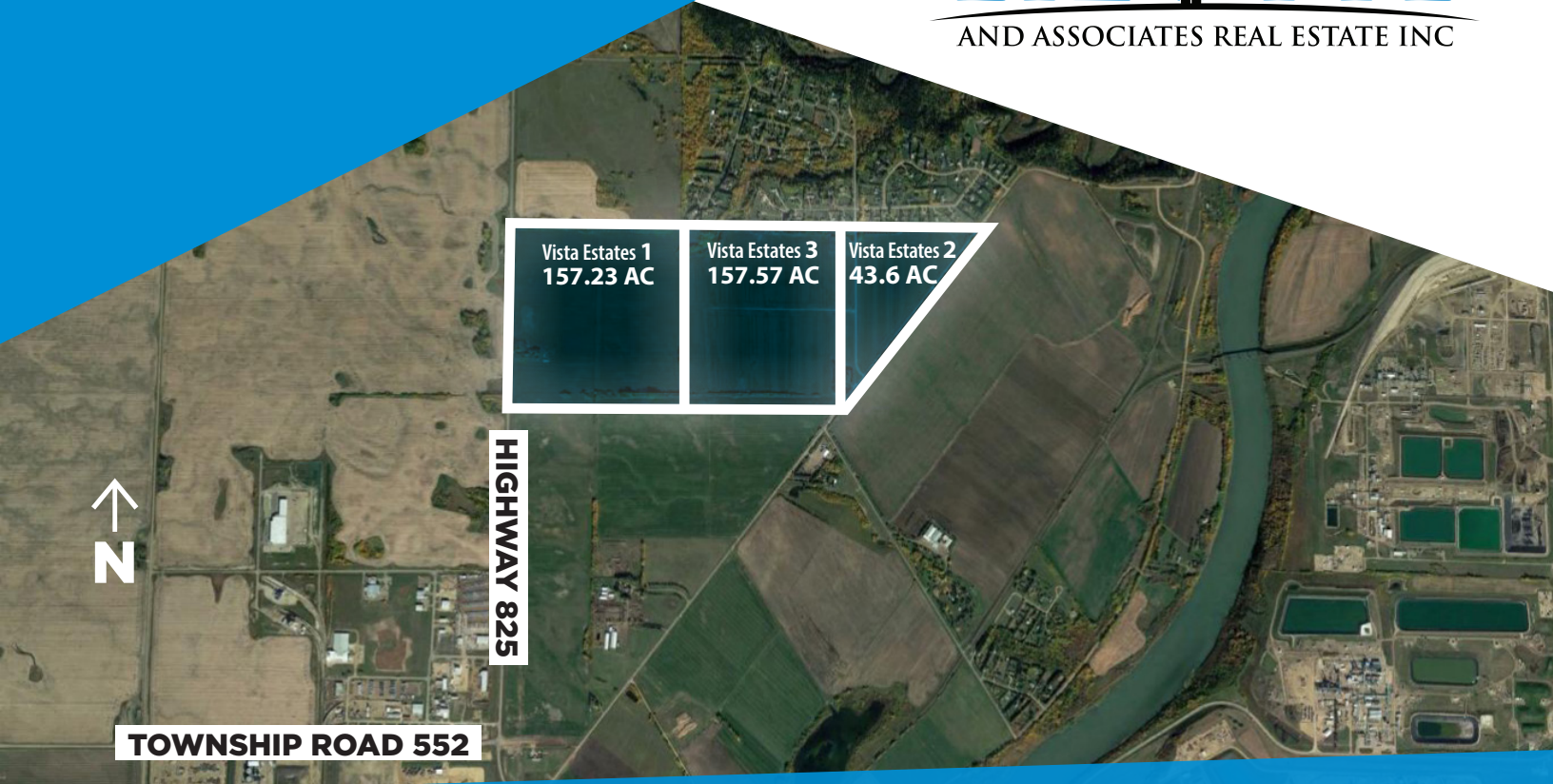


FOR SALE

LIZOTTE
AND ASSOCIATES REAL ESTATE INC



Sturgeon County, AB

VISTA ESTATES LAND

Property Highlights

- Adjacent to Heartland Industrial Area
- Vendor financing is available
- Services within mile of site
- Development land plan available
- Heavy industry transportation corridor
- Located on Highway 825 across from Sturgeon Industrial Park
- Vendor willing to sell smaller portions of land as little as 20 acres (Purchase will be responsible for subdivision and servicing costs)



780.488.0888



www.lizotterealestate.com



#1200, 10117 Jasper Avenue
Edmonton, AB T5J 1W8

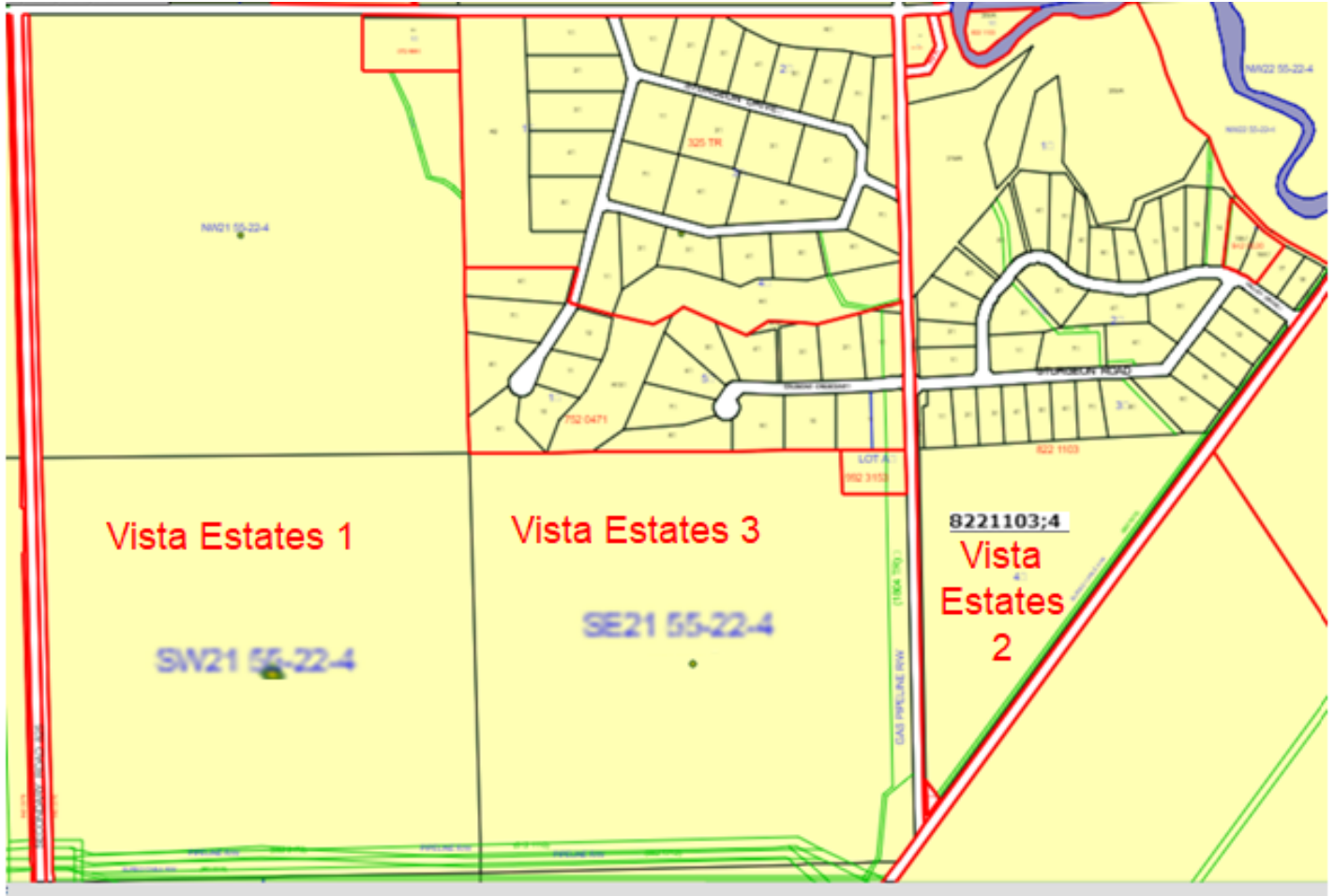


No warranty or representation, expressed or implied, is made as to the accuracy of the information contained herein, and same is submitted subject to errors, omissions, change of price, rental or other conditions, withdrawal without notice, and to any specific listing condition, imposed by our principals.

FOR SALE

Vista Estates Land

LIZOTTE
AND ASSOCIATES REAL ESTATE INC



780.488.0888



www.lizotterealestate.com



#1200, 10117 Jasper Avenue
Edmonton, AB T5J 1W8



No warranty or representation, expressed or implied, is made as to the accuracy of the information contained herein, and same is submitted subject to errors, omissions, change of price, rental or other conditions, withdrawal without notice, and to any specific listing condition, imposed by our principals.

FOR SALE

Vista Estates Land

LIZOTTE
AND ASSOCIATES REAL ESTATE INC

Property Information

Municipal Address: Sturgeon County, AB

Size: **Vista Estates 1** 157.23 Acres (+/-)
Vista Estates 3 157.57 Acres (+/-)
Vista Estates 2 43.6 Acres (+/-)

Zoning: Development Land

Possession: Immediate/negotiable

Contact

Karim Bensalah
Associate
Cell: 780.729.4382
karim@lizotterealestate.com

\$\$\$

Purchase Price: Market



780.488.0888



www.lizotterealestate.com



#1200, 10117 Jasper Avenue
Edmonton, AB T5J 1W8

No warranty or representation, expressed or implied, is made as to the accuracy of the information contained herein, and same is submitted subject to errors, omissions, change of price, rental or other conditions, withdrawal without notice, and to any specific listing condition, imposed by our principals.