

**SIGNIFICANT PRICE  
REDUCTION**



**BUY EQUIPMENT AND LEASE TO OWN BUILDING!**

**12540 - 72 Street, Edmonton, AB**

**FOR SALE**

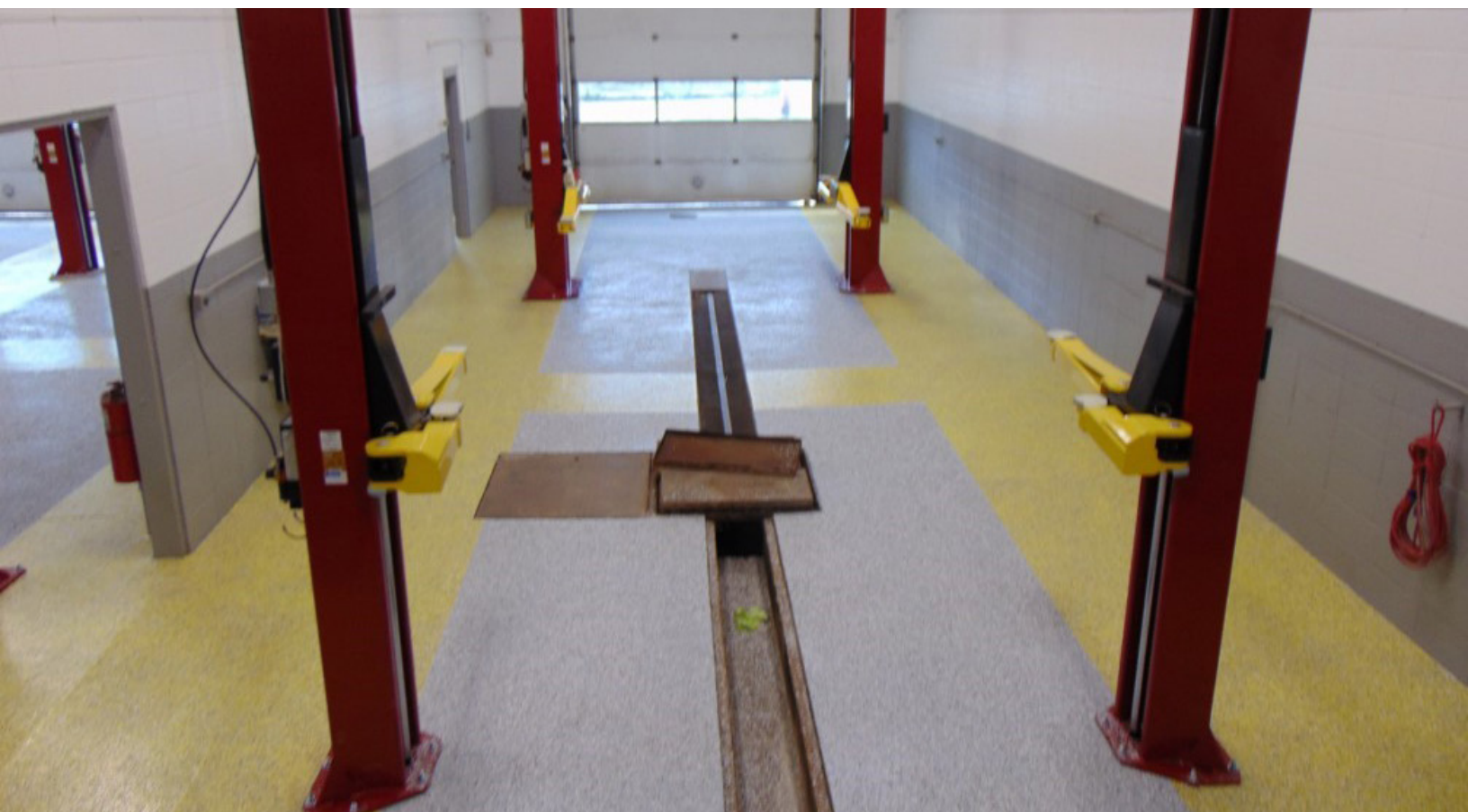
## PROPERTY HIGHLIGHTS

- Fully turn-key 5,000 Sq.Ft. Auto Repair Shop
- Over \$200,000 in building and equipment improvements
- Freestanding building in a strong location
- Ample parking available
- Available immediately



BUY EQUIPMENT AND LEASE TO OWN BUILDING!

**FOR SALE**





# BUY EQUIPMENT AND LEASE TO OWN BUILDING!

**FOR SALE**

## PROPERTY INFORMATION

**MUNICIPAL ADDRESS:** 12540 - 72 Street, Edmonton, AB

**LEGAL DESCRIPTION:** Lot: 1, Block: 11, Plan: 9821533

**SIZE:** 5,112 Sq.Ft. (+/-)

**ZONING:** IM (Medium Industrial Zone)

**PARKING:** Ample surface parking

**POSSESSION:** Immediate/Negotiable

**PURCHASE PRICE:** ~~\$1,200,000~~ **NEW SALE PRICE \$1,100,000**

## MORE INFORMATION

**CHUCK CLUBINE**  
SENIOR ASSOCIATE

Cell: 780.264.7773  
Direct: 780.784.6553  
Fax: 780.483.2277  
chuck@lizotterealestate.com

**TOM DEAN**  
ASSOCIATE

Cell: 780.920.8019  
Direct: 780.784.6550  
Fax: 780.483.2277  
tom@lizotterealestate.com



**LIZOTTE**  
AND ASSOCIATES REAL ESTATE INC.

No warranty or representation, expressed or implied, is made as to the accuracy of the information contained herein, and same is submitted subject to errors, omissions, change of price, rental or other conditions, withdrawal without notice, and to any specific listing condition, imposed by our principals.

**780.488.0888**

[www.lizotterealestate.com](http://www.lizotterealestate.com)

#1200, 10117 Jasper Avenue Edmonton, AB T5J 1W8