

**TENANT
READY**



INDUSTRIAL BAY
17304 - 106A Avenue, Edmonton, AB

FOR LEASE

PROPERTY HIGHLIGHTS

- Easily accessible West Edmonton location
- Ample parking - 2 designated in front, 3 designated in back
- Nicely appointed office with lots of natural light
- Endcap bay
- Perfect for a contractor, wholesaler, or manufacturing business

LIZOTTE
AND ASSOCIATES REAL ESTATE INC.

780.488.0888

www.lizotterealestate.com
#1200, 10117 Jasper Avenue Edmonton, AB T5J 1W8

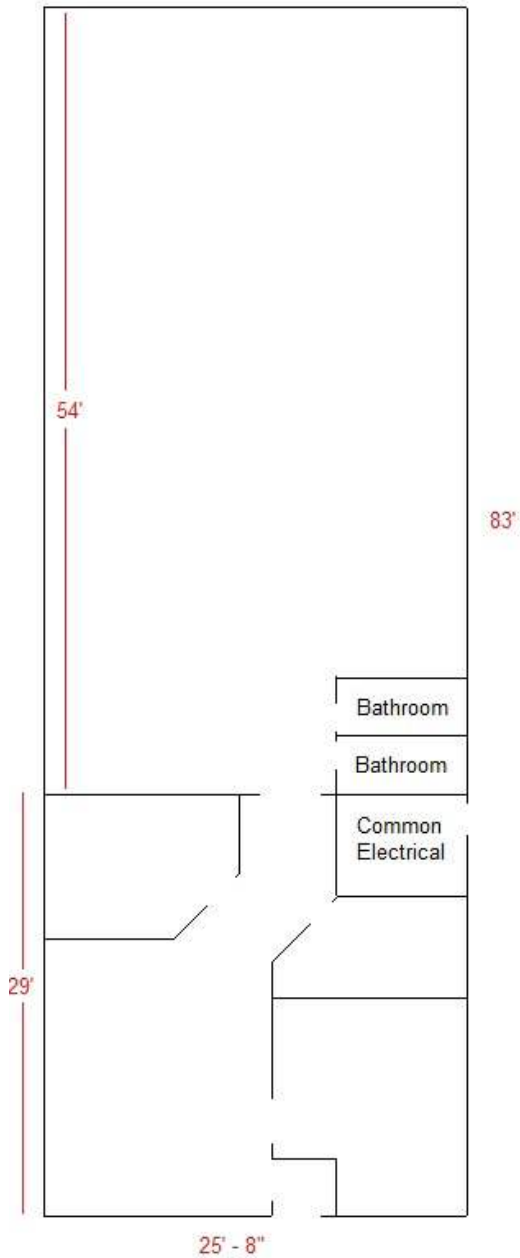
17304

UNIT 6

Starting at \$3,250/mos - All in

2,063 Sq.Ft. (+/-)

- Endcap
- Forced air heat
- T5 lighting



INDUSTRIAL BAY FOR LEASE

PROPERTY INFORMATION

MUNICIPAL ADDRESS: 17304 - 106A Avenue, Edmonton

LEGAL ADDRESS: Condominium Plan 1120867 Unit 6

ZONING: IM (Medium Industrial)

BAY SIZE: 2,063 Sq.Ft. (+/-)

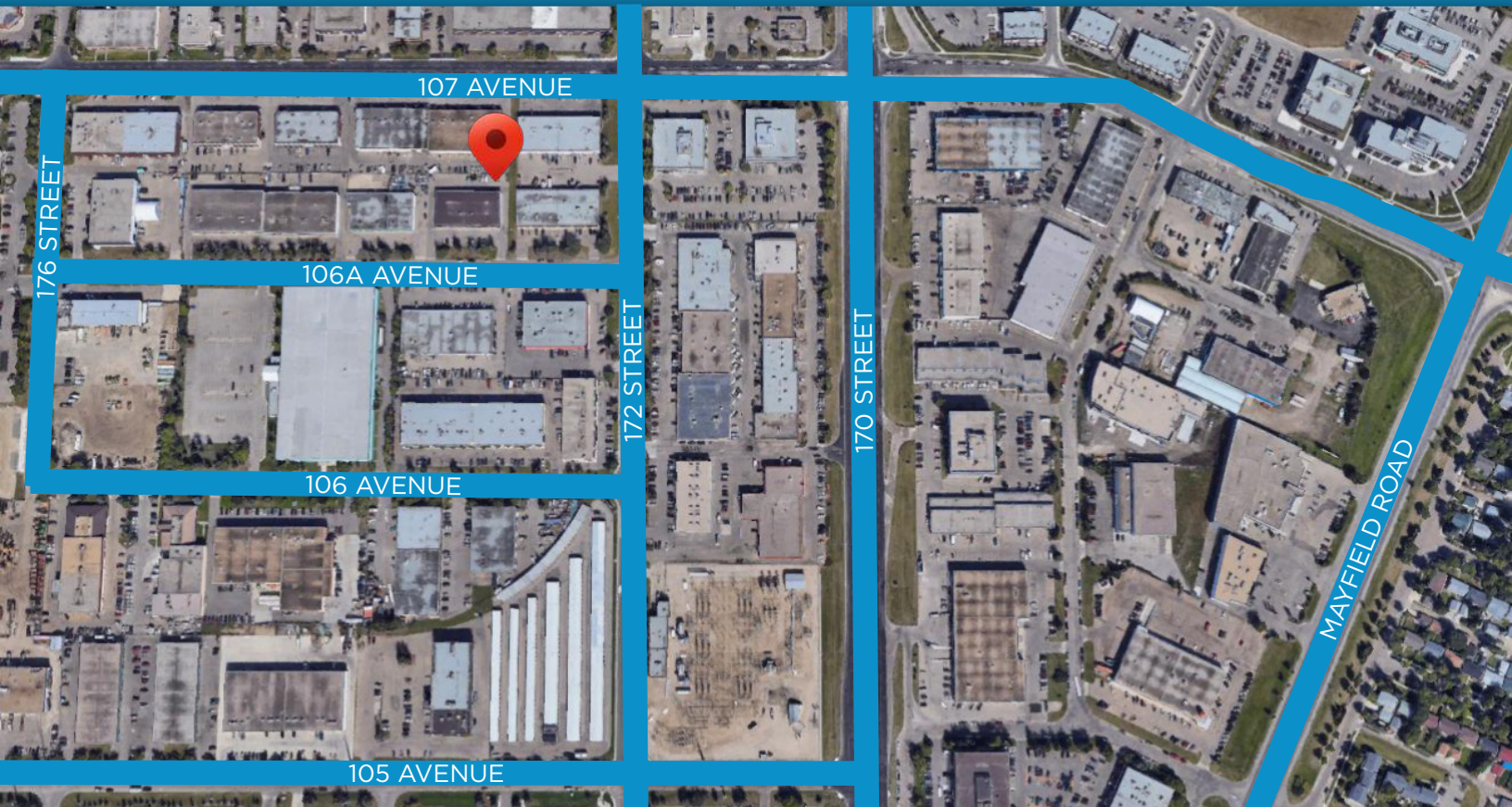
MORE INFORMATION

DON ROBINSON
SENIOR ASSOCIATE

Cell: 780.655.5667
Direct: 780.784.5355
Fax: 780.483.2277
don@lizotterealestate.com

MICHAEL QUIAMBAO
UNLICENSED ASSISTANT

Cell: 780.884.6453
Direct: 780.784.9582
Fax: 780.483.2277
michael@lizotterealestate.com



LIZOTTE
AND ASSOCIATES REAL ESTATE INC.

780.488.0888

www.lizotterealestate.com

#1200, 10117 Jasper Avenue Edmonton, AB T5J 1W8

No warranty or representation, expressed or implied, is made as to the accuracy of the information contained herein, and same is submitted subject to errors, omissions, change of price, rental or other conditions, withdrawal without notice, and to any specific listing condition, imposed by our principals.