

FOR SALE

3,500 SF (+/-)

LIZOTTE

AND ASSOCIATES REAL ESTATE INC



11445 - 124 Street, Edmonton, AB

KING EDWARD CENTRE

Property Highlights

- Second floor walk up office
- 3 garage parking stalls
- Service elevator
- Immediate possession
- Fully leased
- Ample street parking
- Brand new heating and air conditioning system throughout the building



780.488.0888



www.lizotterealestate.com



#1200, 10117 Jasper Avenue
Edmonton, AB T5J 1W8



No warranty or representation, expressed or implied, is made as to the accuracy of the information contained herein, and same is submitted subject to errors, omissions, change of price, rental or other conditions, withdrawal without notice, and to any specific listing condition, imposed by our principals.

FOR SALE

KING EDWARD CENTRE

LIZOTTE
AND ASSOCIATES REAL ESTATE INC

Property Information

Municipal Address: 11445 - 124 Street, Edmonton, AB

Building Size: 3,500 Sq. Ft. (+/-)

Zoning: CB1 (Low Intensity Business Zone)

Possession: Immediate

\$\$\$

Price: \$2,300,000.00

Contact

Richard Lizotte

President/Broker

Cell: 780.292.1871

Direct: 780.784.5360

richard@lizotterealestate.com

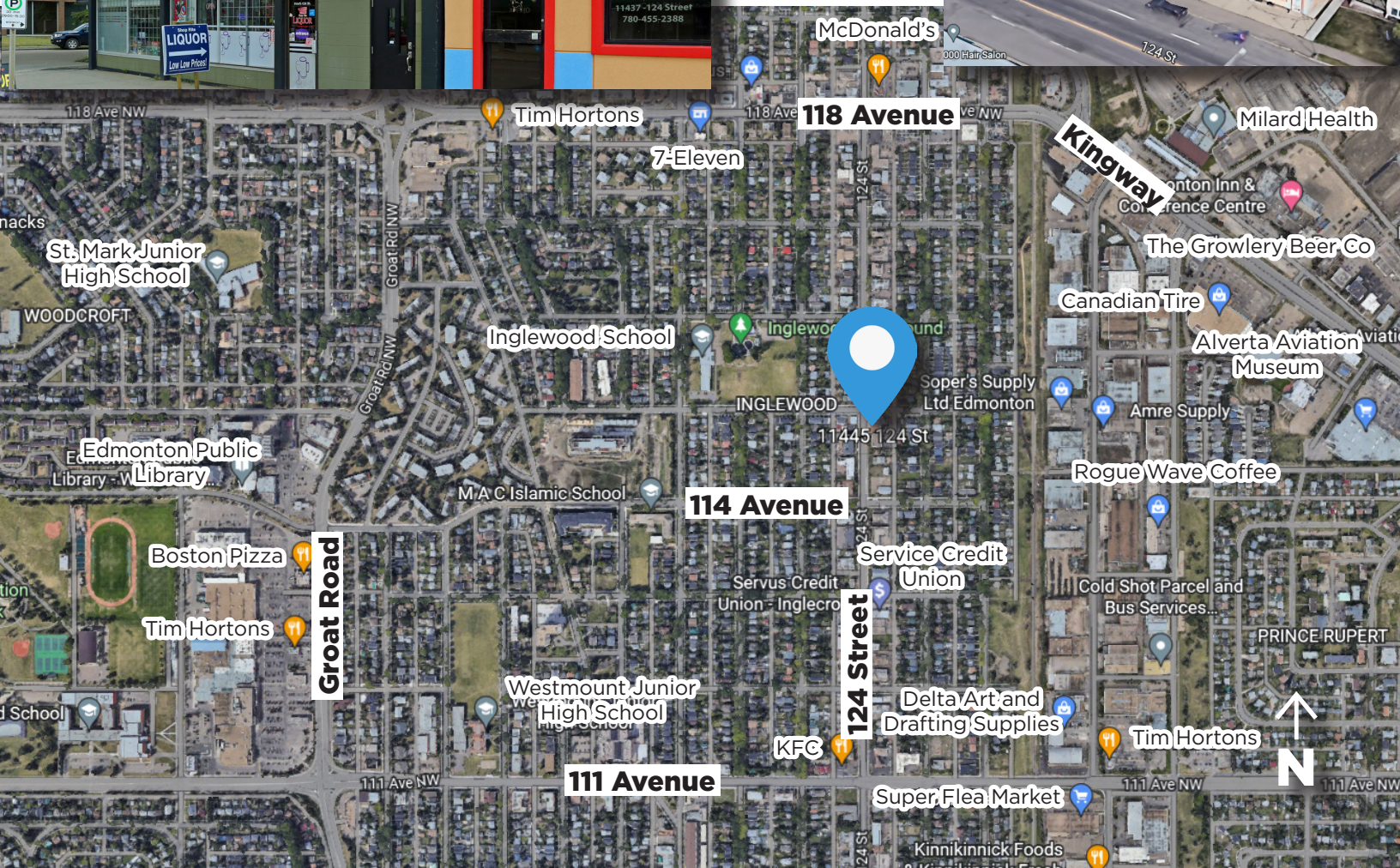
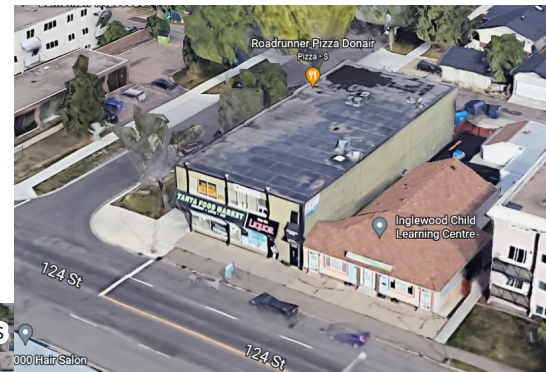
Lee Berger

Associate Broker

Cell: 587.983.6654

Direct: 780.784.5363

lee@lizotterealestate.com



Retail

David J. Olson

Senior Associate
Cell: 780.908.1650
Direct: 780.784.5356
david@lizotterealestate.com

Justin Sorensen

Associate
Cell: 780.257.6860
Direct: 780.784.9581
justin@lizotterealestate.com

Land

Christian Jones

Land Sales Executive
Cell: 780.716.2851
Direct: 780.784.0888
christian@lizotterealestate.com

Karim Bensalah

Associate
Cell: 780.729.4382
karim@lizotterealestate.com

Office

Chuck Clubine

Senior Associate
Cell: 780.264.7773
Direct: 780.784.6553
chuck@lizotterealestate.com

Tom Dean

Associate
Cell: 780.920.8019
Direct: 780.784.6550
tom@lizotterealestate.com

Calgary

Dan Cavanagh

Senior Associate
Cell: 403.918.9190
Direct: 403.930.8180
dan@lizotterealestate.com

David Nicol

Senior Associate
Cell: 403.660.6460
Direct: 403.930.8180 ex 205
dnicol@lizotterealestate.com

Scott Kimmins

Associate
Cell: 403.554.7258
Direct: 403.930.8180
scott@lizotterealestate.com

Industrial

Richard Lizotte

President/Broker
Cell: 780.292.1871
Direct: 780.784.5360
richard@lizotterealestate.com

Lee Berger

Associate Broker
Cell: 587.983.6654
Direct: 780.784.5363
lee@lizotterealestate.com

Derek Shybunka

Associate
Cell: 587.566.3602
Direct: 780.784.0442
derek@lizotterealestate.com

Assistants

Soudabeh Mobin

Unlicensed Assistant
Cell: 780.340.9595
Direct: 780.784.9583
soudabeh@lizotterealestate.com

Ben Olsen

Unlicensed Assistant
Cell: 587.336.1468
Direct: 780.784.0441
ben@lizotterealestate.com

Zachary Funk

Unlicensed Assistant
Cell: 250.691.1360
Direct: 780.784.5359
zach@lizotterealestate.com

Ryan Cox

Unlicensed Assistant
Cell: 780.864.9373
Direct: 780-784-9584
ryancox@lizotterealestate.com

Independent Agents

Rohin Geis

Associate
Cell: 587.597.1553
Direct: 780.784.9586
rohin@lizotterealestate.com

Jackie Haché

Associate
Cell: 780.920.3732
Direct: 780.784.6556
jackie@lizotterealestate.com

Ross Lizotte

Associate Broker
Cell: 780.887.8588
Direct: 780.784.5362
rlizotte@lizotterealestate.com

Contact

Christina Kraby

Unlicensed Assistant
Cell: 780.838.8810
Direct: 780.784.6552
christina@lizotterealestate.com

Sabrina Gregor

Unlicensed Assistant
Cell: 587.335.6620
Direct: 780.784.5357
sabrina@lizotterealestate.com