

PROPERTY HIGHLIGHTS

GINI'S RESTAURANT

LOCATION:

10706-142 STREET, EDMONTON, AB

BUSINESS FOR SALE

- TURN-KEY BUSINESS FOR SALE
- IN CONTINUAL OPERATION FOR 28 YEARS
- EXCELLENT PARKING ON SITE
- NEIGHBORING COMMUNITIES INCLUDE, GLENORA, WESTMOUNT, OLIVER, 124 STREET, AND DOWNTOWN CORE.
- ENTIRE RESTAURANT HAS BEEN RECENTLY RENOVATED THROUGHOUT, FULLY FIXTURED
- HIGH TRAFFIC AREA WITH OVER 25,800 VEHICLES PER DAY IN TRAFFIC
- LOCAL POPULATION OF 62,800 (3KM) WITH AN AVERAGE HOUSEHOLD INCOME OF \$96,795

BUSINESS FOR SALE

GINI'S RESTAURANT

LIZOTTE
AND ASSOCIATES REAL ESTATE INC

PROPERTY INFORMATION

MUNICIPAL ADDRESS: 10706-142 Street, Edmonton, AB

TYPE OF BUSINESS: Restaurant

SIZE: 2,330 Sq.Ft (+/-)

CAPACITY: 50-90

POSSESSION: Immediate

PARKING: Ample scramble

PURCHASE PRICE: Please contact Associate

NOTE: A confidentiality agreement must be completed prior to any lease details or financial information is presented at the discretion of the current ownership group and their Associate. They will consider all reasonable offers and terms.

MORE INFORMATION

DAVID J. OLSON
SENIOR ASSOCIATE
RETAIL LEASING & BUSINESS SALES

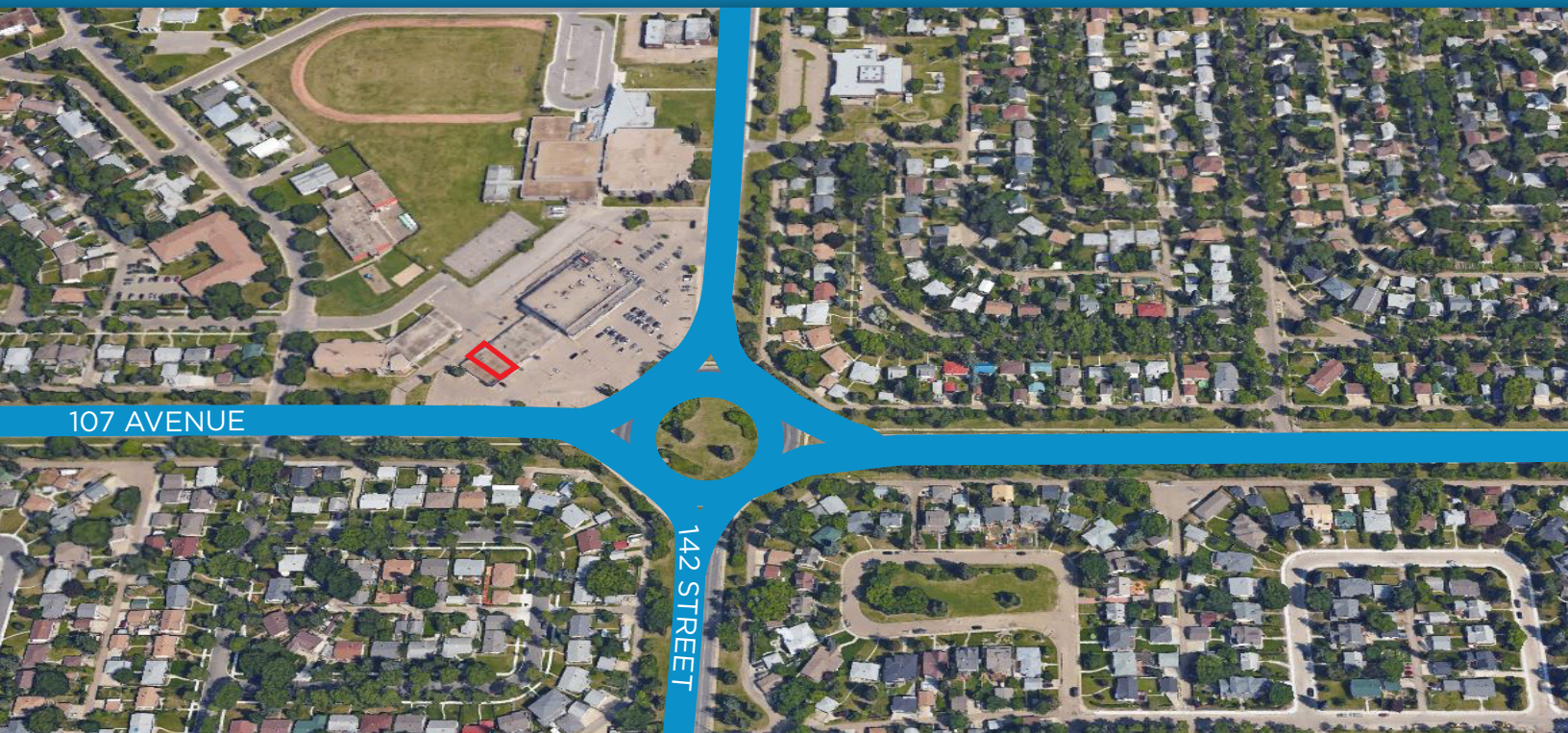
Cell: 780.908.1650
Direct: 780.784.5356
Fax: 780.483.2277
david@lizotterealestate.com

KEVIN MURRAY
ASSOCIATE

Cell: 780.236.2838
Direct: 780.784.5357
Fax: 780.483.2277
kevin@lizotterealestate.com

ANNA IEROKHINA
UN-LICENSED ASSISTANT

Cell: 780.246.0255
Direct: 780.784.5358
Fax: 780.483.2277
anna@lizotterealestate.com



LIZOTTE
AND ASSOCIATES REAL ESTATE INC

780.488.0888

WWW.LIZOTTEREALESTATE.COM

No warranty or representation, expressed or implied, is made as to the accuracy of the information contained herein, and same is submitted subject to errors, omissions, change of price, rental or other conditions, withdrawal without notice, and to any specific listing condition, imposed by our principals.

#1201, 10117 JASPER AVENUE, EDMONTON, AB T5J 1W8