



## PROPERTY HIGHLIGHTS

**HARVEST INDUSTRIAL PARK - 20,720 SQ.FT**

### LOCATION:

3498-63 AVENUE, LEDUC, AB

**FOR SALE/LEASE**

- CONCRETE STANDALONE BUILDING WITH YARD
- 20,720 SQ.FT OFFICE/WAREHOUSE
- ZONING – IL (LIGHT INDUSTRIAL)
- FENCED AND GRAVELED
- CRANE READY - 10 TON
- DESIGN BUILD OFFICE OPTIONS AVAILABLE
- BONUS STORAGE MEZZANINE
- AVAILABLE IMMEDIATELY

# FOR SALE/LEASE

HARVEST INDUSTRIAL PARK - 20,720 SQ.FT

**LIZOTTE**  
AND ASSOCIATES REAL ESTATE INC

## PROPERTY INFORMATION

**MUNICIPAL ADDRESS:** 3498-63 Avenue, Leduc, AB

**LEGAL ADDRESS:** Plan 1520109, Block 5, Lot 1

**SIZE:** 20,720 Sq.Ft (+/-)

- Office: 2,020 Sq,Ft
- Warehouse: 18,695 Sq.Ft
- Mezzanine: 2,000 Sq.Ft

**SITE SIZE:** 2.10 Acres (+/-)

**ZONING:** IL (Light Industrial)

**POSSESSION:** Immediate

**POWER:** 400 AMP, 600 Volt

**LOADING:** (4) 14' X 16' grade loading doors

**CRANE:** 10 ton crane ready

**CEILING HEIGHT:** 24'

**PURCHASE PRICE:** \$255/Sq.Ft

**LEASE RATE:** \$14.50/Sq.Ft

**OPERATING COSTS:** TBC

### ADDITIONAL DETAILS:

- High efficiency building
- Turn-key, insulated concrete tilt-up
- Office design build options available
- 10 ton crane ready
- Compacted yard
- Sumps in each bay



**LIZOTTE**  
AND ASSOCIATES REAL ESTATE INC

No warranty or representation, expressed or implied, is made as to the accuracy of the information contained herein, and same is submitted subject to errors, omissions, change of price, rental or other conditions, withdrawal without notice, and to any specific listing condition, imposed by our principals.

780.488.0888

WWW.LIZOTTEREAL ESTATE.COM

#1201 10117 JASPER AVE. NW EDMONTON, AB T5J 1W8



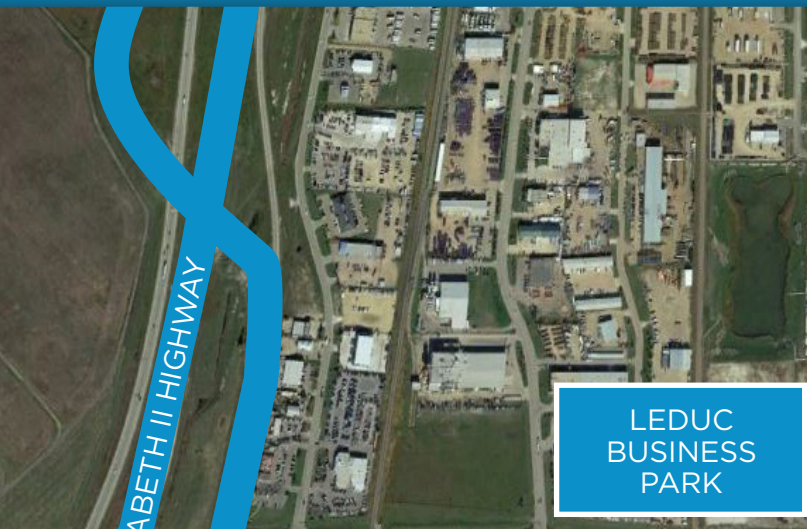
# FOR SALE/LEASE

## HARVEST INDUSTRIAL PARK - 20,720 SQ.FT

**LIZOTTE**  
AND ASSOCIATES REAL ESTATE INC

### LOCATION HIGHLIGHTS

- Prominent service industry for Fort McMurray
- Located 34 kms from Edmonton
- Minutes from Edmonton International Airport
- High exposure to 65 Avenue/New Industrial Park
- Quick access to multiple major transportation routes including QEII Highway, Highway 18 (625), Highway 623, Anthony Henday Ring Road
- Wide range of amenities nearby for employees and customers



65 AVENUE



**LIZOTTE**  
AND ASSOCIATES REAL ESTATE INC

780.488.0888

WWW.LIZOTTEREAL ESTATE.COM

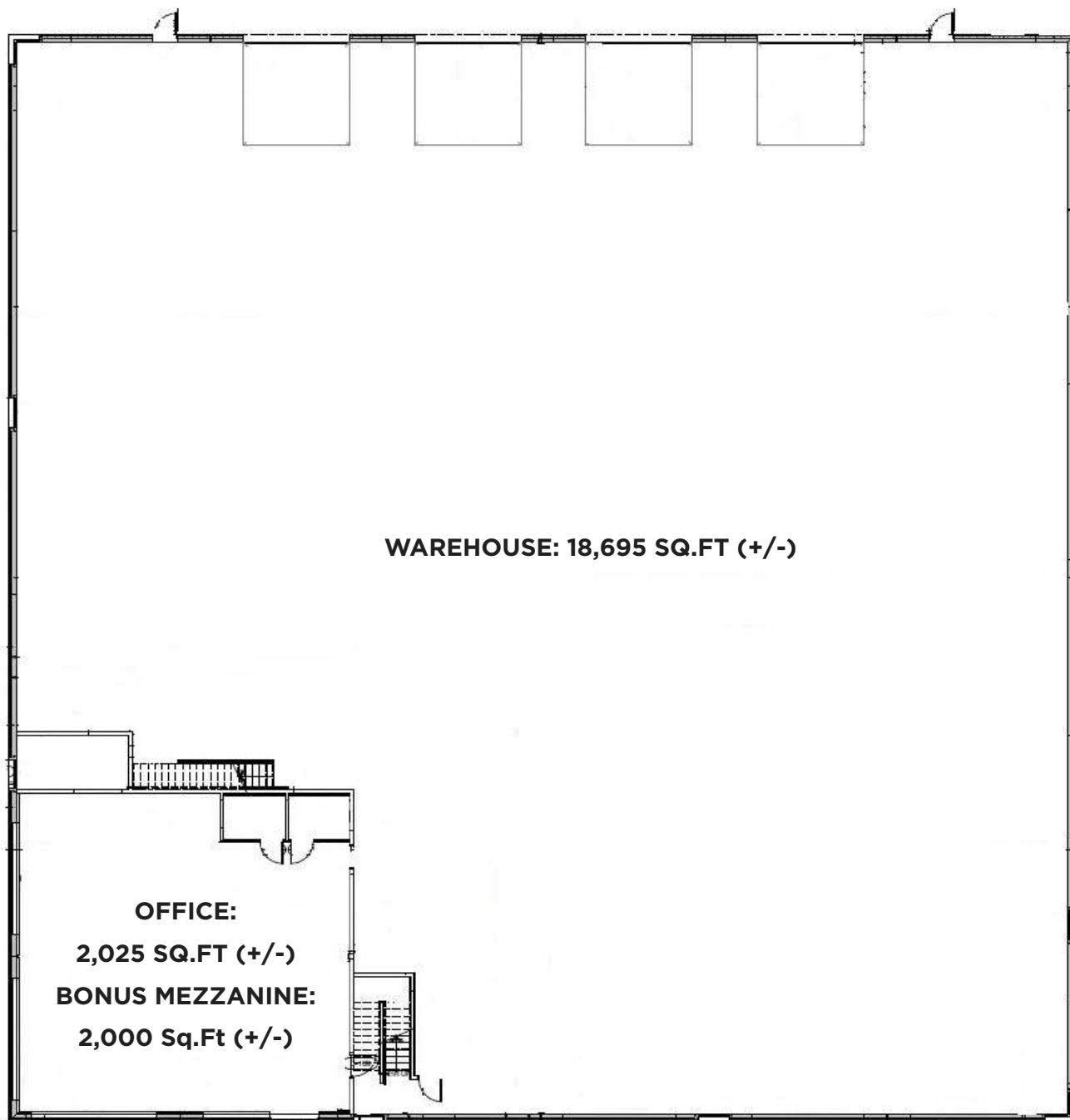
No warranty or representation, expressed or implied, is made as to the accuracy of the information contained herein, and same is submitted subject to errors, omissions, change of price, rental or other conditions, withdrawal without notice, and to any specific listing condition, imposed by our principals.

#1201 10117 JASPER AVE. NW EDMONTON, AB T5J 1W8

# FOR SALE/LEASE

HARVEST INDUSTRIAL PARK - 20,720 SQ.FT

**LIZOTTE**  
AND ASSOCIATES REAL ESTATE INC



**LIZOTTE**  
AND ASSOCIATES REAL ESTATE INC

780.488.0888

WWW.LIZOTTEREALESTATE.COM

No warranty or representation, expressed or implied, is made as to the accuracy of the information contained herein, and same is submitted subject to errors, omissions, change of price, rental or other conditions, withdrawal without notice, and to any specific listing condition, imposed by our principals.

#1201 10117 JASPER AVE. NW EDMONTON, AB T5J 1W8



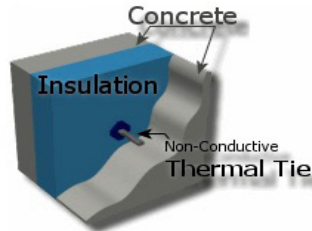
# FOR SALE/LEASE

## HARVEST INDUSTRIAL PARK - 11,040 SQ.FT

**LIZOTTE**  
AND ASSOCIATES REAL ESTATE INC

### Energy Efficiency

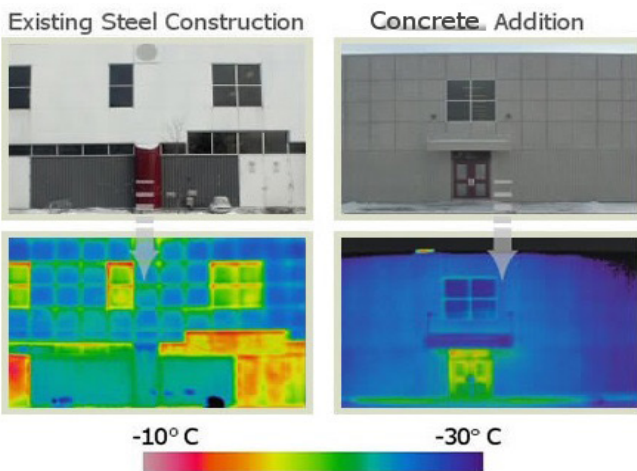
Concrete has excellent thermal properties and, when combined with "Sandwich Panel" tilt-up construction, can offer solutions to cold climate construction. "Sandwich Panel" has advantages when developing buildings requiring environmental control (such as cold storage amenities or high technology facilities).



Tilt-up is a much tighter building system than traditional methods; an R16 Tilt-Up panel system will perform as well as or better than an R32 low mass construction system. The contributing factors are non-conductive thermal bridging, 3" thick insulation and the thermal mass of the concrete. Tilt-Up concrete buildings offer an overall energy and life cycle performance that is typically 20% to 60% more efficient than non-tilt-up buildings.

### Thermal Efficiency Comparison

The illustration below shows a winter heat loss comparison between the existing building and recent tilt-up addition. Red and yellow indicate heat loss and air movement.



### Industrial

In an industrial building, tenants really appreciate the column-free perimeter of a load bearing tilt-up structure. They can layout their racking without interruption around the perimeter of the structure as there is no loss or impedance caused by traditional structural column framing.

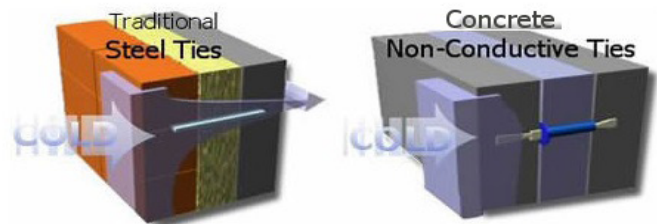
Tenants also appreciate the added security and durability of a reinforced concrete panel. After all, a concrete panel is much more difficult to cut open than a traditional metal skin or EIFS-clad façade. Not only are the contents protected, but the owner protects his investment in the structure itself and realizes insurance benefits too. When we add an insulation core to the reinforced panels, the thermal storage capacity of the walls will assist in maintaining the interior temperature should there be a power failure. This added benefit provides the lowest operating costs among all wall assemblies.

**Energy efficiency** - The natural heat sink properties of concrete reduce energy costs. Tilt-up buildings offer an overall energy and life cycle performance that is typically 20-60 percent more efficient.

**Safety, security and durability** - Vandalism and maintenance are minimized while security is increased.

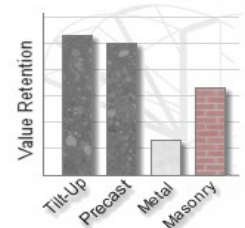
### Non-Conductive Thermal Ties

Traditional steel ties allow heat to be transmitted through the wall, and result in elevated energy costs. Concrete non-conductive thermal ties do not transmit this energy through the wall.



### Long-Term Value

Concrete is a long-lasting construction material, which avoids maintenance problems typically associated with traditional construction systems. This means that concrete tilt-up buildings retain more value compared to other construction technologies.



## MORE INFORMATION

**RICHARD LIZOTTE**  
PRESIDENT/BROKER

Cell: 780.292.1871  
Direct: 780.784.5360  
Fax: 780.483.2277  
richard@lizotterealestate.com

**HARRIS PIPELLA**  
VICE PRESIDENT

Cell: 780.905.2729  
Direct: 780.784.5353  
Fax: 780.483.2277  
harris@lizotterealestate.com

**JIM MICKINNON**  
PARTNER/ASSOCIATE

Cell: 780.719.8183  
Direct: 780.784.5361  
Fax: 780.483.2277  
jim@lizotterealestate.com

**ASHLEY HEISE**  
EXECUTIVE ASSISTANT

Cell: 780.887.3065  
Direct: 780.784.6551  
Fax: 780.483.2277  
ashley@lizotterealestate.com

**LIZOTTE**  
AND ASSOCIATES REAL ESTATE INC

No warranty or representation, expressed or implied, is made as to the accuracy of the information contained herein, and same is submitted subject to errors, omissions, change of price, rental or other conditions, withdrawal without notice, and to any specific listing condition, imposed by our principals.

780.488.0888

WWW.LIZOTTEREAL ESTATE.COM

#1201 10117 JASPER AVE. NW EDMONTON, AB T5J 1W8